

MONSTER KART DLX



IMPORTANT



Be Sure
to Read this
Manual
Before Use



To UNIS Parts And
Service/Manuals



UNIS TECHNOLOGY

Operation Manual

Notice: Check www.unispartsandservice.com/manuals for current manuals and updates.

WE ARE HERE TO ASSIST For parts and service



Have Questions? Contact us!

UNIS SERVICE CENTER

Tel: 972-241-4263


Email: service@unispartsandservice.com

www.unispartsandservice.com

When contacting Service, you will need the following information
and the name of your authorized distributor.

INDOOR MACHINE	
NAME: Monster Kart DLX Twin GMP	MAX POWER: 2159W
MODEL: C-860	MIN POWER: 612W
S/N:	FREQUENCY: 60Hz
VOLTAGE: AC110V~	DATE:
Guangdong UNIS Technology Co.,Ltd.	

INDOOR MACHINE	
NAME: Monster Kart DLX Twin EU	MAX POWER: 2159W
MODEL: C-859	MIN POWER: 612W
S/N:	FREQUENCY: 50Hz
VOLTAGE: AC220V-240V~	DATE:
Guangdong UNIS Technology Co.,Ltd.	



CONTENT

IMPORTANT SAFETY INSTRUCTIONS	3
1. SPECIFICATIONS	5
2. CONTENTS OF THE ACCESSORY KIT	6
3. PART NAME	7
4. SET UP & INSTALLATION	8
5. HOW TO PLAY	15
6. GAME OPTION	18
7. TROUBLESHOOTINGS	23
8. MAINTENANCE & INSPECTION	26
9.OVERALL CONSTRUCTION	27
10. AIR COMPRESSOR INSTRUCTION(For 110V)	65
11. AIR COMPRESSOR INSTRUCTION(For 220V)	72
12.WIRING DIAGRAM	78

Thank you for purchasing **Monster Kart DLX Twin GMP**. We hope you enjoy the product.

This manual contains valuable information about how to operate and maintain your game machine properly and safely. It is intended for the owner and/or personnel in charge of product operation. Carefully read and understand the instructions.

If you need any help during installation and setup please utilize this manual and troubleshooting guide. If the product fails to function properly, *non-technical personnel should under no circumstance attempt to service the machine*. Contact your distributor or manufacturer for help.

Before use, please read **IMPORTANT SAFETY INSTRUCTIONS**.

IMPORTANT SAFETY INSTRUCTIONS

To ensure the safe usage of this product, carefully read and understand these instructions before operating your game.

Save these instructions for future reference.

Use this product only as described in this manual. Other uses not recommended may cause fire, electric shock or personal injury. Unplug the game from the outlet when not in use, when moving from one location to another, and before cleaning/servicing.

Explanations which require special attention are indicated by signs of warning. Depending on the potential hazardous degree, the terms: **NOTE**, **NOTICE**, and **WARNING** are used.

NOTE: A NOTE indicates useful hints or information about product usage.

NOTICE: A NOTICE indicates potential damage to product and how to avoid the problem.

WARNING: A WARNING indicates a potential for product damage or serious personal injury.

It is important to understand the meaning of the following HAZARD SIGNS before continuing:

High Voltage and Shock Hazard:

High voltage can cause electric shock.
Turn off/unplug power before servicing.



High Temperature Hazard:

This part may cause scalding.
Do not touch. Surface may be hot.



No Touching Hazard:

This part may be hot or can cause electric shock.
Do not touch.



Use the following safety guidelines to help ensure your own personal safety and to help protect your equipment and surrounding environment from potential damage.

⚠️ This product is an indoor game machine. Do not install outdoors.

Avoid installing in the following places to prevent fire, electric shock, injury and/or machine malfunctioning:

- Places subject to rain/moisture, or places subject to high humidity.
- Places subject to direct sunlight, or places subject to extremely hot or cold temperatures to ensure that it is used within the specified operating range.
- Places where inflammable gas may be present or in the vicinity of highly inflammable/volatile chemicals or items that can easily catch fire.
- On unstable or sloped surfaces. The machine may topple or cause unforeseen accidents.
- Vicinity of fire exits, fire extinguishers etc that may block/prevent safety measures.

IMPORTANT NOTE:

ALL REPAIRS MUST BE DONE TO ORIGINAL MANUFACTURER SPECIFICATIONS. FAILURE TO DO SO VOID ALL WARRANTIES AND OPERATOR ASSUMES ALL RISKS.

Note: The contents of this manual may be updated without notice.

1. SPECIFICATIONS

Rated power supply: AC110V 50/60Hz; AC220V 50/60Hz;

Min. Power consumption: 612W

Max. Power consumption:2159W

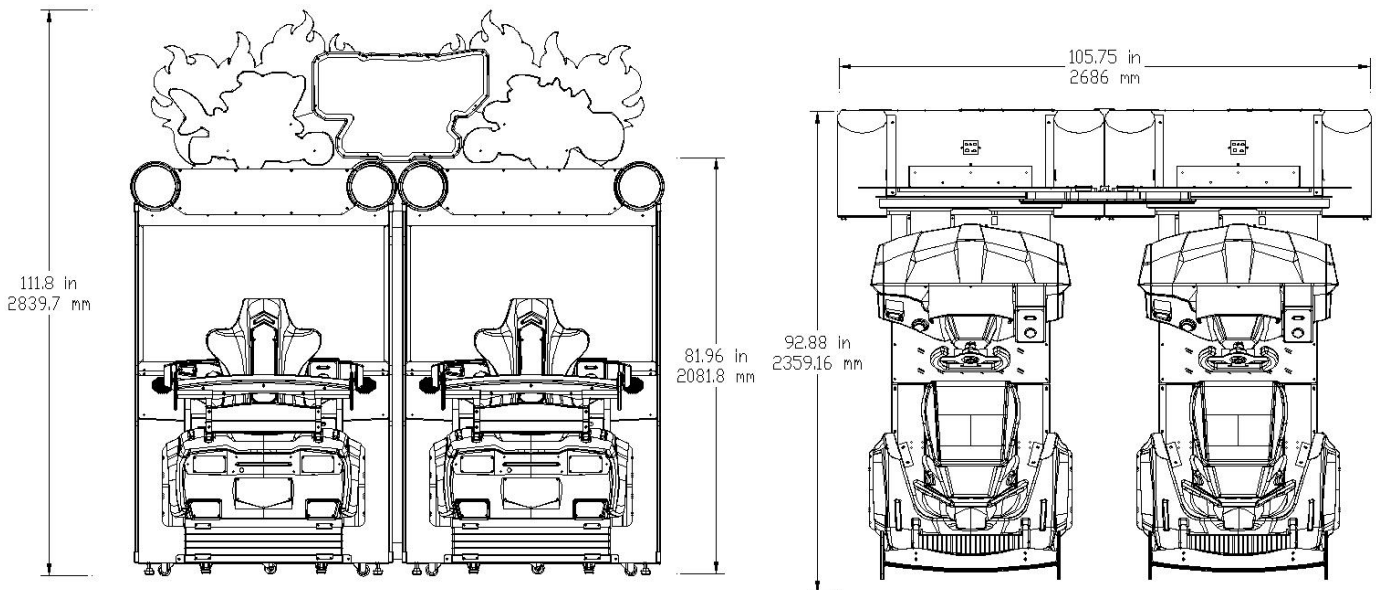
Dimension: H111.8×W105.75×D92.88 in

H2839.7×W2686 ×D2359.16 mm

Weight: Approximately 2645.54 lb/1200KG

Model No: C-860(GMP); C-859(EU)

! **NOTICE** : After turning off the game, please wait at least 1 minute before restarting again.




Note: Game specifications are subject to change without notice.

2. CONTENTS OF THE ACCESSORY KIT

Open the package and make sure all the items are included:

1. Following accessories

No.	Part No.	Code No.	Name	Qty	Picture
1	M164-1901-00	4.14.40000888	Manual	1	
2	M164-1903-00	2.53.00171002	171A key	2	
3	M164-1904-00	2.53.00172002	171B key	2	
4	M164-1910-00	2.33.01.000001	Power cord 3×18AWG 1.8M UL	4	
5	M164-1750-00	2.19.01.000012	Fuse Φ5×20mm T5A/250VAC	4	
6	M164-1906-00	2.33.02.000012	Network cable 5m	2	
7	M164-1907-00	2.11.08.010011	Switch(5 port)	1	/
8	M164-1908-00	2.66.03.030629	Coin mech. Blanking plate δ=1.5	2	/
9	M164-1909-00	2.66.03.030630	Ticket dispenser blanking plate δ=1.5	2	/

Note: Game specifications are subject to change without notice.

3. PART NAME

Key Components



4. SET UP & INSTALLATION

! NOTICE

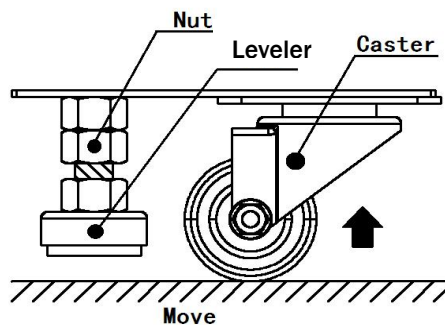
We do not recommend using power tools as they may cause damage.

! This product is an indoor game machine. Do not install outdoors.

- Refer to IMPORTANT SAFETY INSTRUCTIONS (Pg. 3) for places to avoid.
- Place the unit on a dry level surface.
- Ventilation openings in the back of the unit must not be obstructed by objects or by wall.

4.1 Transporting the Game

If you need to move the game, adjust the levelers back to an “up” position.



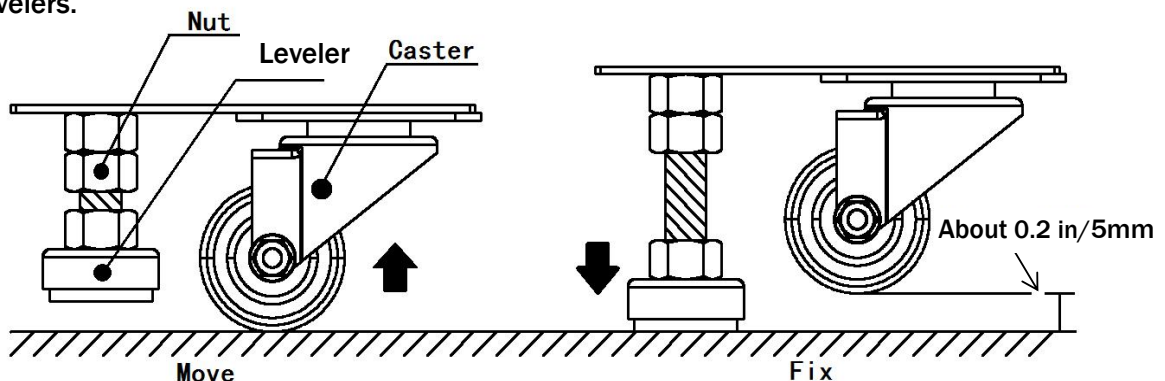
! NOTICE

- Be careful not to damage the machine during transport.
- Always unplug the game before moving.
- Keep the machine in upright position during transport.
- For longer distance transport, package the game properly to prevent damages.

4.2 Level Adjustment

Install this game on a flat surface. If the game is installed on an unsuitable floor, it could cause game malfunction.

To secure the game, loosen the nut, utilize wrench to adjust the leveler down until it touches the floor, lifting the casters off the ground by 0.2 in/5mm. Repeat the same for all levelers.



! NOTICE

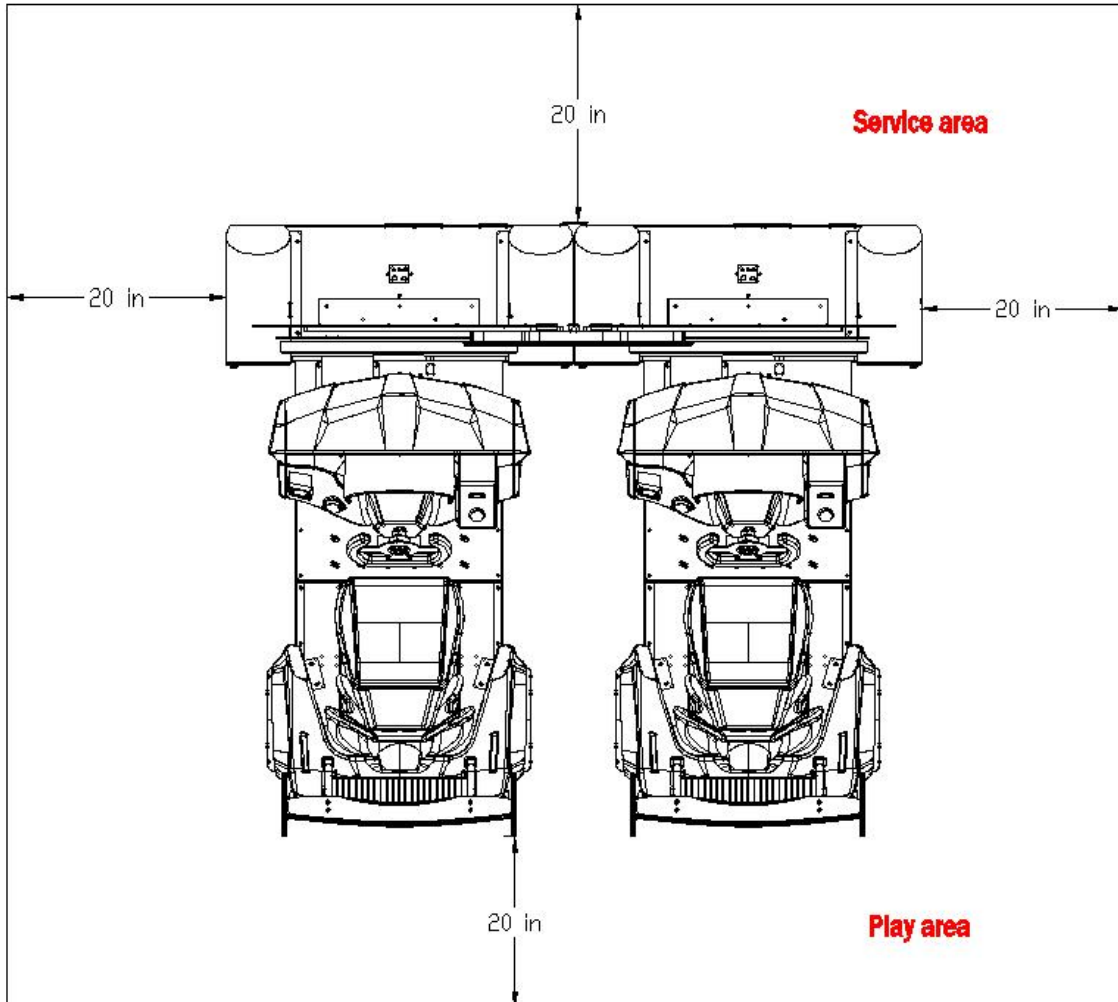
Make sure the machine is level.

4.3 Play Zone

This machine requires space for playing and for maintenance as shown below.

Leave space around the game upon installation:

Service area: 20 in

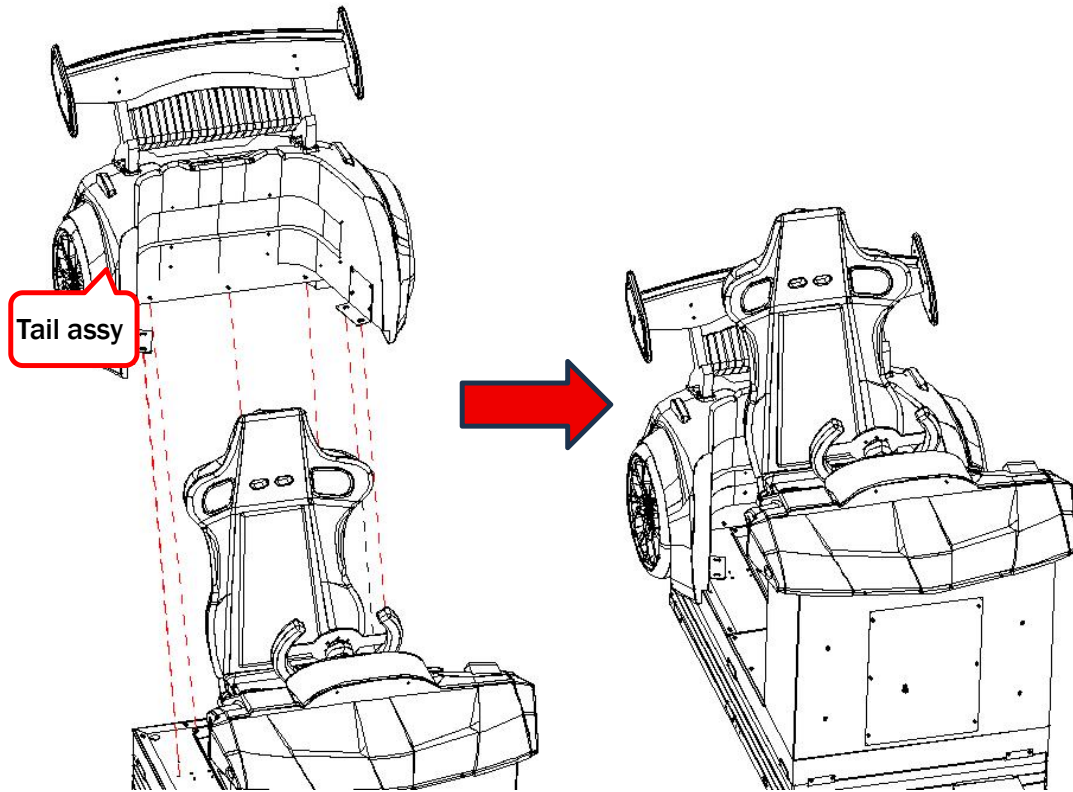


NOTICE

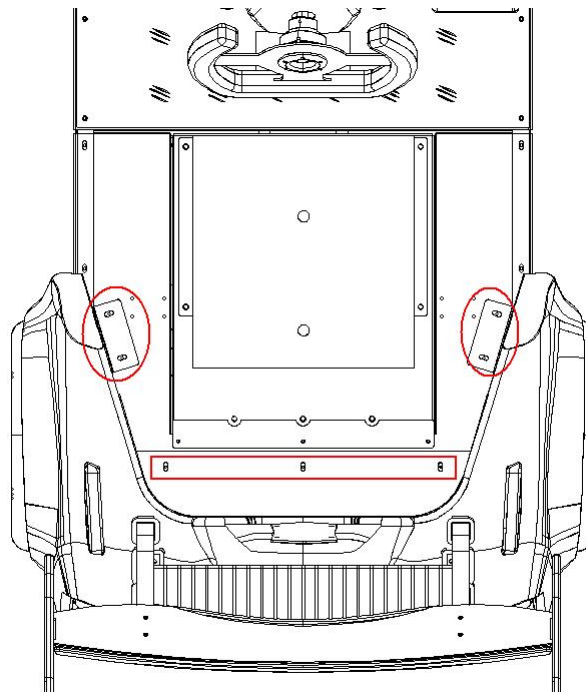
Your unit must be leveled to operate properly.

4.4 Machine Installation

Step 1 Locate Car assembly. Install Tail assy to the car back side.

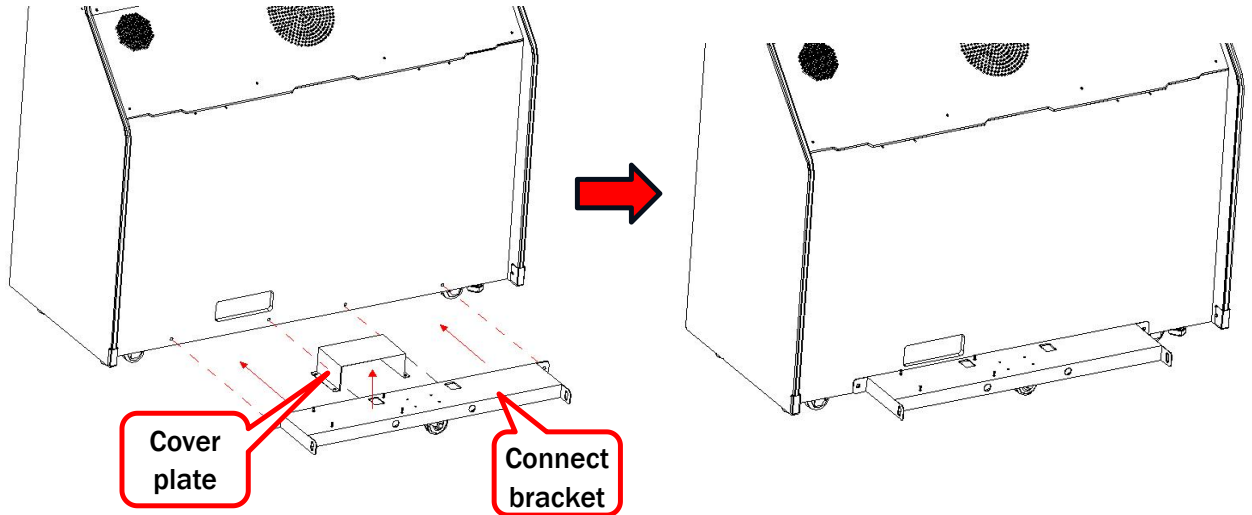


Utilize screws to secure.



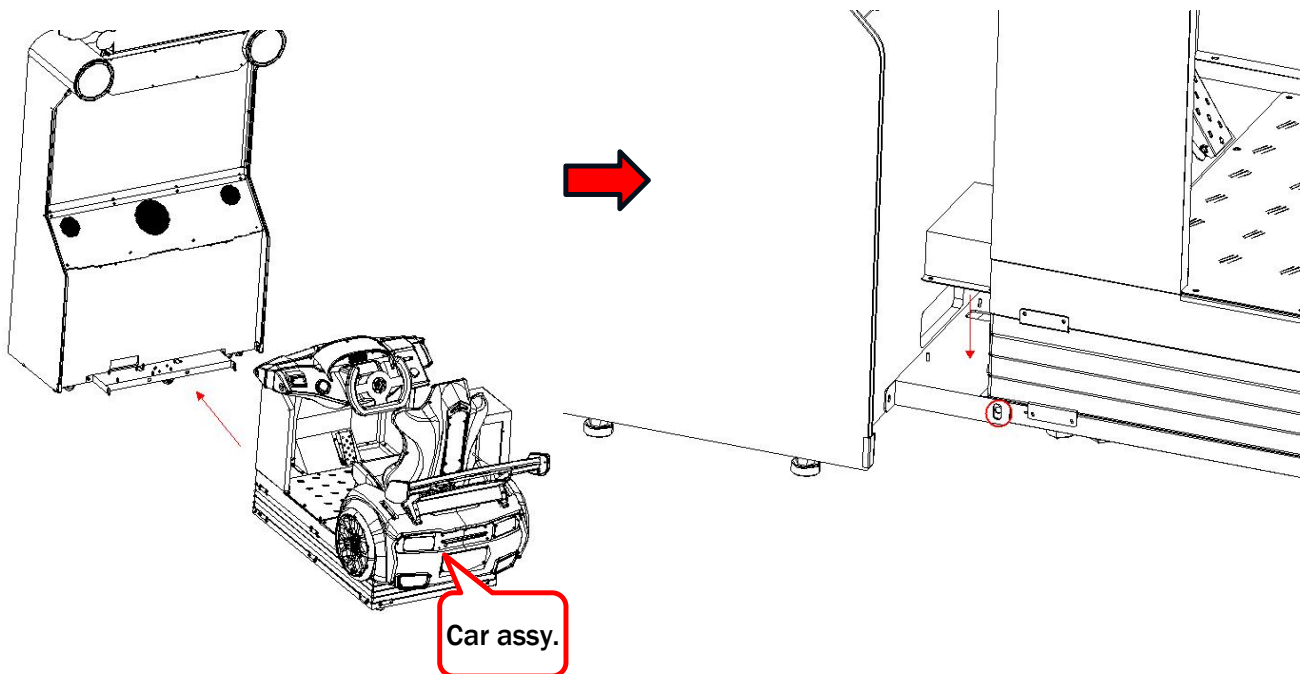
Step 2 Locate connect bracket. Loosen screws yo remove cover plate.

Step 3 Install connect bracket to the monitor cabinet. Utilize screws(M6*20) to secure.



Step 4 Align Car assembly with the monitor cabinet. Connect the connectors and pipes.
Utilize screws(M10*20) to secure.

Step 5 Install Cover plate back.

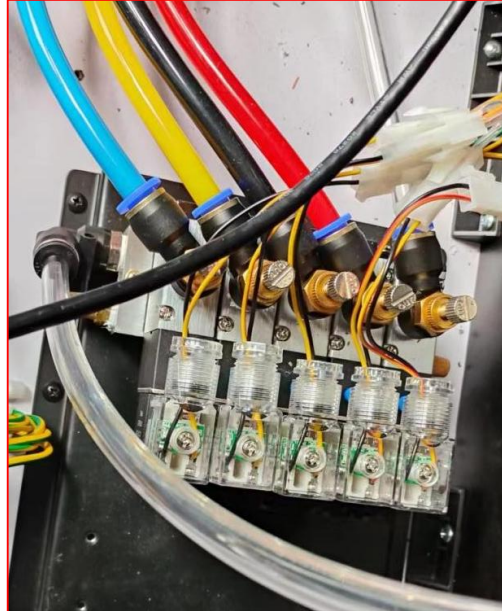


Monster Kart DLX Twin GMP Manual

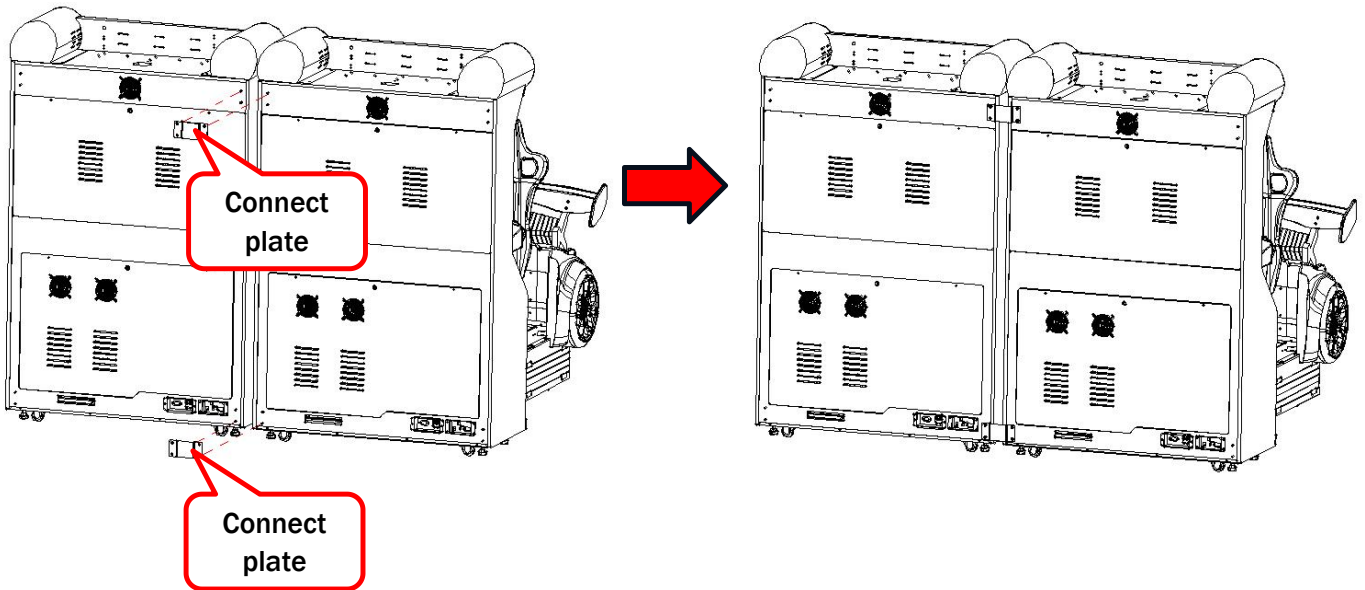
Notice: Pull the air pipes through the bottom(same place as the cables above)from the seat part to the monitor part.

Open the service door at the back, plug in the air pipes according the picture.

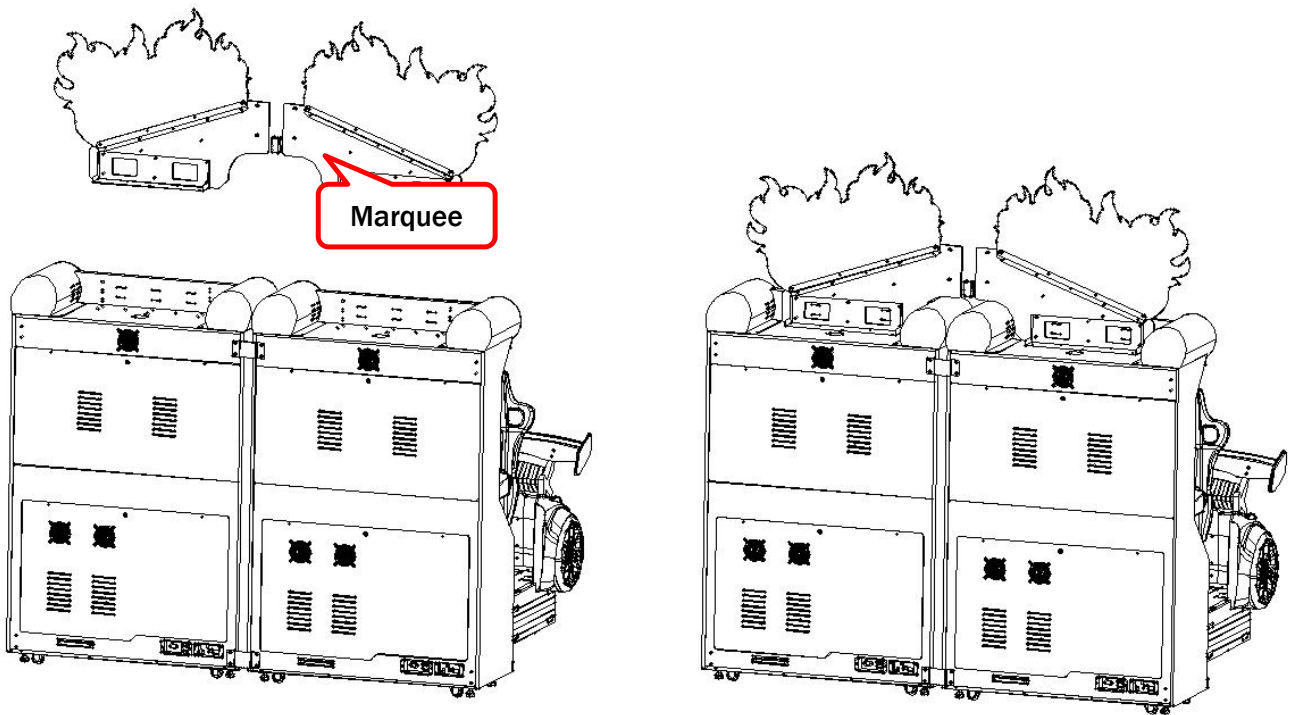
From left to right: blue, yellow, black, red, clear.



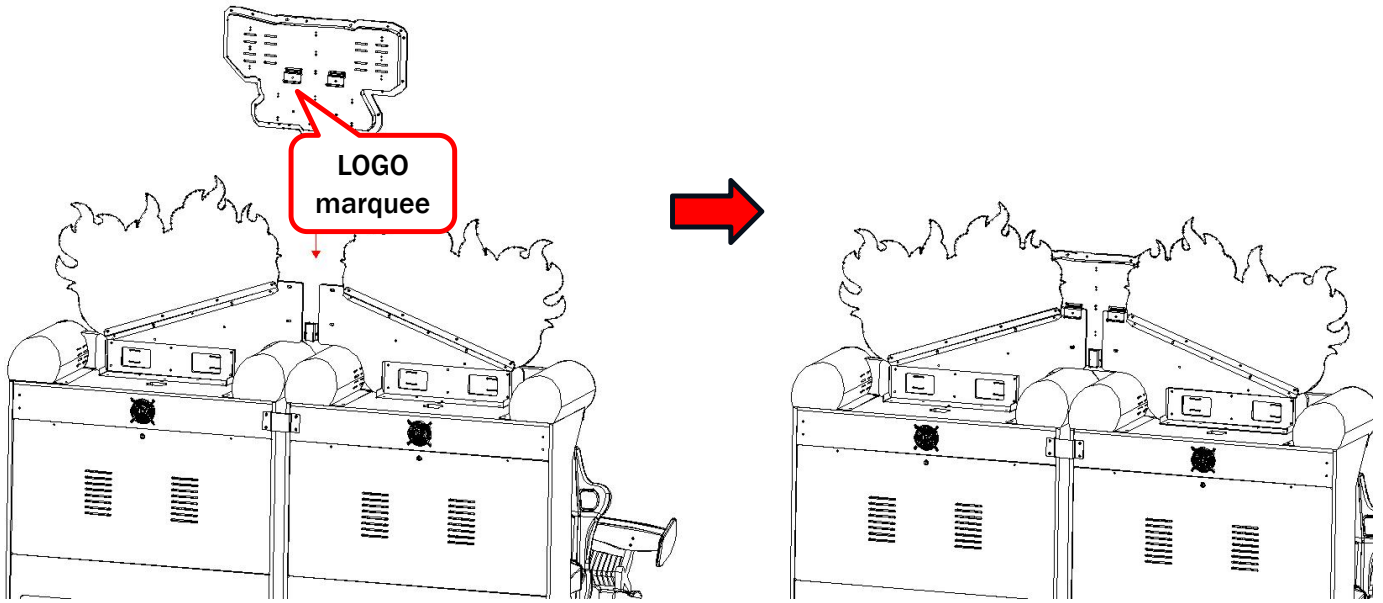
Step 6 Connect two cabinet together. Utilize screws (M6*20) to secure connect plate.



Step 7 Install linking marquee. Utilize screws (M6*20) to secure




Step 8 Install LOGO marquee. Utilize screws(M6*12) to secure.



Finish!

4.5 Card Reader Installation Safety Notice

 Take precaution to assure that all wiring voltages are confirmed prior to installation of card reader. All warranties are void if not properly installed resulting in logic board damage.

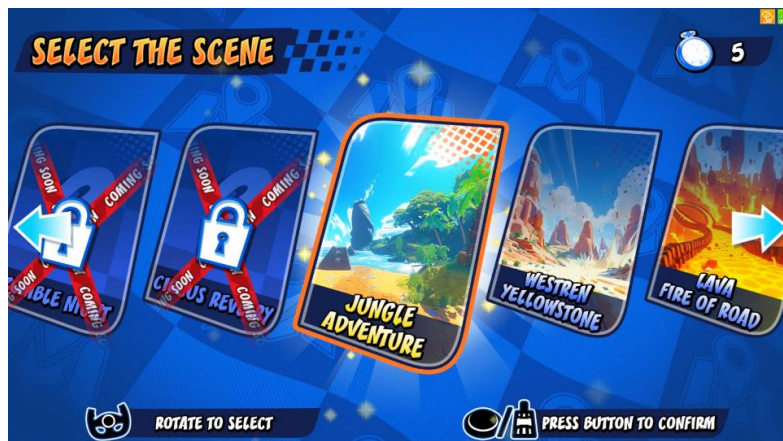
Important: This game is pre-wired to AAMA standards. It is highly recommended to utilize this wiring for Card reader installation.

5. HOW TO PLAY

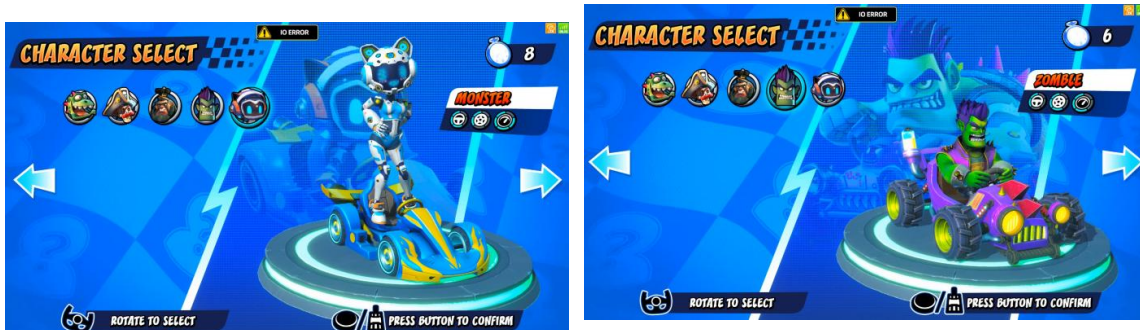
5.1 Insert coins/tap/swipe card to play.



5.2 Select Scene. Each scene has its own unique layout and difficulty, and the scenarios are updated later through online updates.



5.3 Select Character. Each character has unique speed, handling and stability characteristics.



5.4 Ready to start. Press the gas pedal to make to car go faster. Control driving wheel to turn Left/right.



5.5 Drift: Release the gas pedal, then step on the gas pedal and turn the steering wheel. Drifting allows the kart to go through corners at a faster speed.



5.6 Crush “?” box to win props. Different props has different functions. Press red button to shoot the props.

Bowling Bomb: Rolls in a straight line, knocking down other racers.

Tornado: Attacks all racers in front of you except yourself.

Tracking Bomb: Tracks and strikes the car in front of you.

Protective Shield: Nullifies the effect of any prop once.

Energy Acceleration: Gives the car a short high-speed sprint.

Oil: Spinning and skidding of passing cars.

Time Bomb: explodes three seconds after hitting the top of the back of the car.

Thundercloud: Tracks the 1st place car.

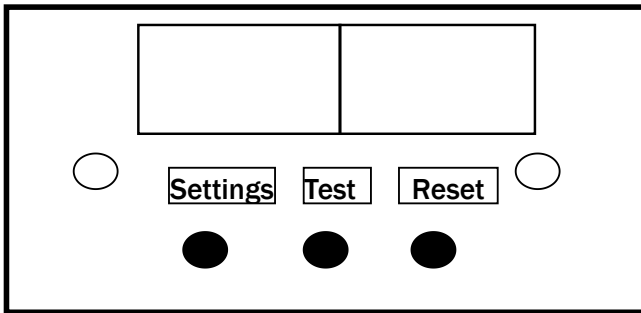


5.7 Ranking List shows the player's ranking, challenge stage and time.



6. GAME OPTION

6.1 Adjustment button instruction



Open the coin door and there is a meter panel. Press Settings button to enter into the setting menu.

6.2 Setting menu

6.2.1 Main menu

Options
Main Menu
Basic Setting
Customized Setting
Linking Setting
Output Test
Input Test
Wheel Calibration

Options
Motion Platform Test
Game Reset
Date/Time Setting
Bookkeeping
Daily Record
About This Game
Back to game

6.2.2 Basic Setting

Options	Adjustment Value	Default
Free Play	OFF_ON	OFF
Tickets Out	OFF_ON	ON
Out Of Tickets	Store Tickets in Memory_Call Attendant	Store Tickets in Memory
Demo Music	OFF_ON	ON
Memory Save	OFF_ON	ON
Volume	1_10	7
BGM Volume	1_10	10
SE Volume	1_10	10
VO Volume	1_10	6
Coins	1_10	1
Pay Mode	Insert Coins_Tap/Swipe Card_Insert Coins & Tap/Swipe Card	Insert Coins
Restart Time In Demo Mode	60_520	300

6.2.3 Customized Setting

Options	Adjustment Value	Default
Mode Select Time	5_20	8
Car Select Time	5_20	8
Scene Select Time	5_20	8
Game Time	40_480	360
Game Difficulty	Easy _ Medium _ Hard	Medium
Game Lap	1_3	2
Continue Mode	OFF_ON	ON
Continue Time	5_20	12
Divided By 2	OFF_ON	ON
Fixed Ticket(s) Mode	OFF_ON	OFF
Fixed Ticket(s)	1_100	6
1st Ticket(s)	1_100	10
2nd Ticket(s)	1_100	7
3rd Ticket(s)	1_100	5
Mercy Ticket(s)	1_100	3
Top Ranking	OFF_ON	ON
Number of Top Players	5_20	10
Screen LED RGB	Random_Red_Blue_Yellow_Green_Purple	Random
Auto-use Props Mode	OFF_ON	ON
Auto-use Props Time	1_60	10
Motion Select	OFF_ON	ON
Motion Mode	Weak_Strong	Strong
Seat Belt Setting	Seat Belt No Affection To Motion_Seat Belt To Activate Motion	Seat Belt To Activate Motion
Back & Save		
Back		

6.2.4 Linking Setting

Options	Adjustment Value	Default
Linking Mode	OFF_ON	ON
Linking Players	1_6	2
Machine ID	1_6	1
Linking Wait Time	5_20	8
Back & Save		
Back		

6.2.5 Output Test

Options
Ticket Drive
L Channel
R Channel
Mid Channel
Seat L Channel
Seat R Channel
Start/Attack Button Light
Car Tail Light
Panel Side Light

Options
Monitor Side Light-R
Monitor Side Light-G
Monitor Side Light-B
Monitor Bottom Light
Blower
Stop Button Light
Seat Shake
Back

6.2.6 Input Test

Options
Coin
Ticket Out
Ticket Feedback
Stop Button
Gas Pedal(Higher)
Gas Pedal(Lower)
Start/Attack Button
Draining Valve
Steering Wheel Position(Higher)

Options
Steering Wheel Position(Lower)
Blower
Safebelt
Seat Motor State
Board To Board Communication Error
Steering Wheel Motor Error
Main Board Communication Error
Back

6.2.7 Wheel Correction

Notice: Turn the steering wheel to the far left/right

Options
Rotate the steering wheel to the left
Steering wheel Middle
Rotate the steering wheel to the right
Steering wheel Now
Wheel Calibration Test
Resistance
Back

6.2.8 Motion Platform Test

Instruction: Test the Motion Platform

Options
F Airbag Test
L Airbag Test
R Airbag Test
B Airbag Test
Seat Airbag Test
Back

6.2.9 Game Reset

Options	Adjustment Value
Factory Restore	CANCEL_CLEAR
Reset Basic Setting	CANCEL_CLEAR
Reset Customized Setting	CANCEL_CLEAR
Clear All Records	CANCEL_CLEAR
Clear Owed Tickets	CANCEL_CLEAR
Clear Unused Coins	CANCEL_CLEAR
Back	

6.2.10 Date/Time Setting

Options
Year
Month
Day
Hour(24)
Minute
Second
Back&Save
Back

6.2.11 Bookkeeping

Player	Coins	Tickets	Payout	Continue Play
These Settings Are Non-Resettable				
Back				

6.2.12 Daily Record

Date	Weekday	Runtime	Coins	Tickets	Payout	Service Coins	Continue Play
Clear							
Back							



7. TROUBLESHOOTINGS

7.1 Common Problem

Please confirm that all connectors fit tightly.

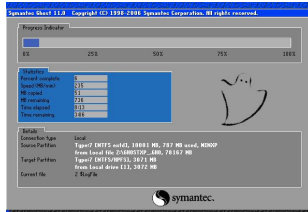
Symptom	Possible Cause	Recommended action
Game will not start	Frame assembly connector is loose.	Check connector.
	Frame assembly fault	Contact with UNIS Service.
Power off	Circuit protector make power SW in off state.	Turn on power SW again. If appeared again and again, machine has anomaly. Please contact with UNIS Service.
Card reader not working	The connector is loose.	Check connector.
	Card reader fault.	Check with card reader manufacturer.
No ticket dispensing	Out of ticket.	Add ticket and press reset button
	Ticket jamming.	Remove the jammed tickets and press reset button.
	The connector is loose.	Plug the connector tightly.
No sound	Low volume	Raise the volume.
	Connector loose.	Check connector.
	Speaker fault.	Check speaker.
	POT installation error.	Install POT correctly.
	POT fault.	Change POT.
	Audio cable problem.	Reconnect the audio cable or change it.

If you see following error signs showing on the display, please try the recommended action.

Display	Possible Cause	Recommended action
	The connection part of the IO board and PC are loose.	Check and reconnect the loose ports of the PC or IO board.
	Cable quality problem	Change the cable after checking the connection between IO board and PC.
	Cable became loose during transportation.	Check and reconnect the loose cables of the PC or IO board.
	IO board is faulty.	Reboot the game after checking U disk connection and cable problem, if the problem remains unresolved, please call the service department for assistance.
	Out of ticket.	Refill ticket
	Loose connection of the ticket dispenser's cables.	Check and reconnect the loose cables to the ticket dispenser.
	Ticket dispenser is faulty.	Change the ticket dispenser.
	Ticket jam.	Remove jammed tickets.

7.2 System Recovery Operation (NOTE: Do not disconnect power during this process.)

1. Turn off the game. Remove recovery stick from the machine. (Note: This process may take up to 60 minutes) Insert the recovery stick into the port at the back of the computer.
2. Restart PC to enter the system recovery screen as shown.



3. The game will automatically start recovery.
4. Once system recovery is partially finished (as shown below), and the ICON appears, remove the recovery stick from the computer. The game will continue the install process.

OK to remove the recovery stick.



5. Assure that the recovery stick has been properly secured for future use.



WARNING: The recovery stick should only be used to fix software errors. Using it for other purposes may cause unexpected results and damages.

8. MAINTENANCE & INSPECTION

8.1 Safety Check

Check the points listed before operating the machine. These checks are necessary for safe machine operation:

1. Test game before operation each day.
2. Conduct monthly routine checks of game components to ensure good working condition.
3. Check the machine regularly for dust and clean when necessary.

Note: Parts and components require preventative maintenance to maintain proper operation.

8.2 Handling Precautions

When installing or inspecting the machine, be very careful and pay attention to ensure that the player can enjoy the game safely.

Inappropriate handling running counter to the cautionary matters can cause personal injury or damage to the machine.

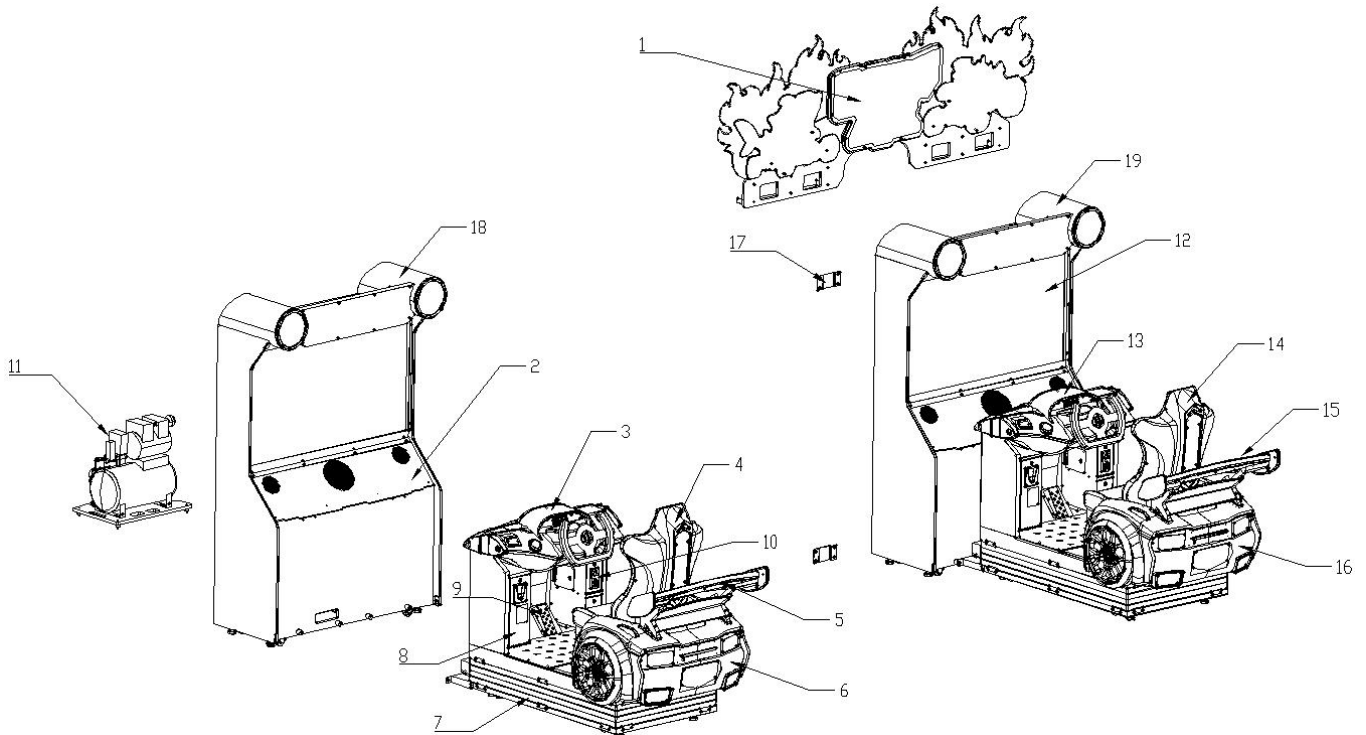


NOTICE

We do not recommend using power tools as they may cause damage.

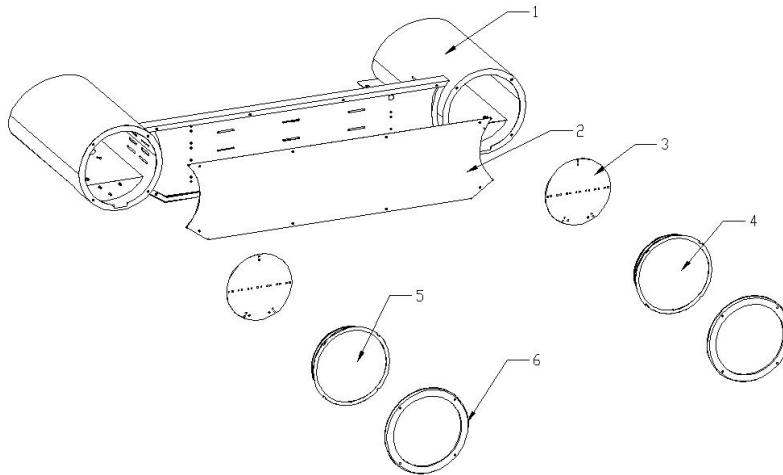
9.OVERALL CONSTRUCTION

9.1 General Assembly



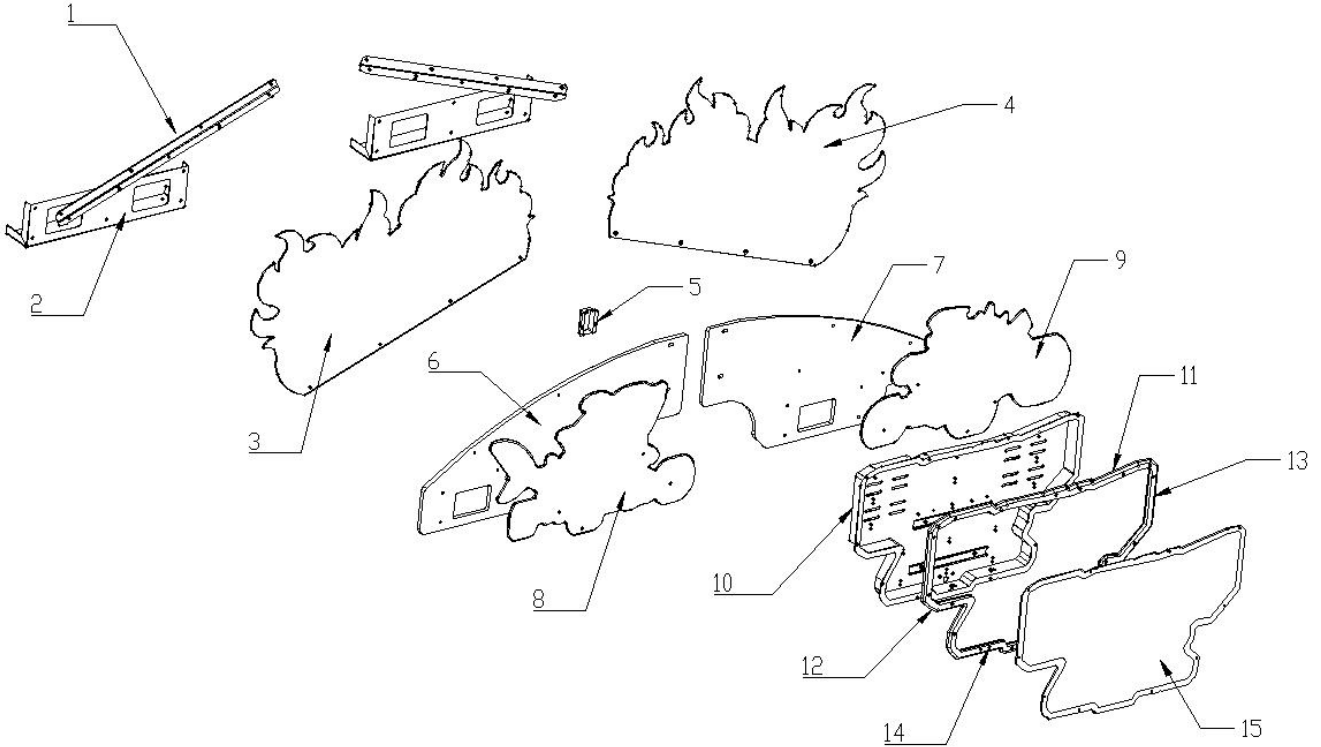
No.	Part No.	Code No.	Name	Version	Qty
1	M164-0400-00	299.4.2437.055	Twin marquee assy	1.1	1
2	M164-0100-00	299.4.2437.044	Main cabinet(purple)	1.2	1
3	M164-0500-00	299.4.2437.048	Panel assembly(purple)	1.2	1
4	M164-0700-00	299.4.2437.026	Seat assembly	1.3	1
5	M164-0900-00	299.4.2437.027	Tail wing assembly	1.3	1
6	M164-1100-00	299.4.2437.028	Tail assembly(purple)	1.1	1
7	M164-1500-00	299.4.2228.042	Base assembly	1.2	2
8	M164-1400-00	299.4.2437.054	Ticket box assembly	1.1	2
9	M164-1600-00	299.4.1606B.009	Gas pedal assembly	1.2	2
10	M164-1300-00	299.4.2437.053	Coin box frame assembly	1.1	2
11	M164-0300-00	299.4.2437.031	Air compressor assy(110V)	1.3	2
	M164-0324-00	299.4.2437.038	Air compressor assy(220V)	1.3	2
12	M164-0200-00	299.4.2437.046	Main cabinet(orange)	1.2	1
13	M164-0600-00	299.4.2437.049	Panel assembly(orange)	1.2	1
14	M164-0800-00	299.4.2437.050	Seat assembly(orange)	1.2	1
15	M164-1000-00	299.4.2437.051	Tail wing assembly(orange)	1.1	1
16	M164-1200-00	299.4.2437.052	Tail assembly(orange)	1.1	1
17	M164-0001-00	202.4.1830.005	Connect plate	1.1	2
18	M164-0138-00	299.4.2437.034	Light Frame Assy	1.3	1
19	M164-0201-00	299.4.2437.047	Light Frame Assy(orange)	1.1	1

9.2 Front Light Assembly



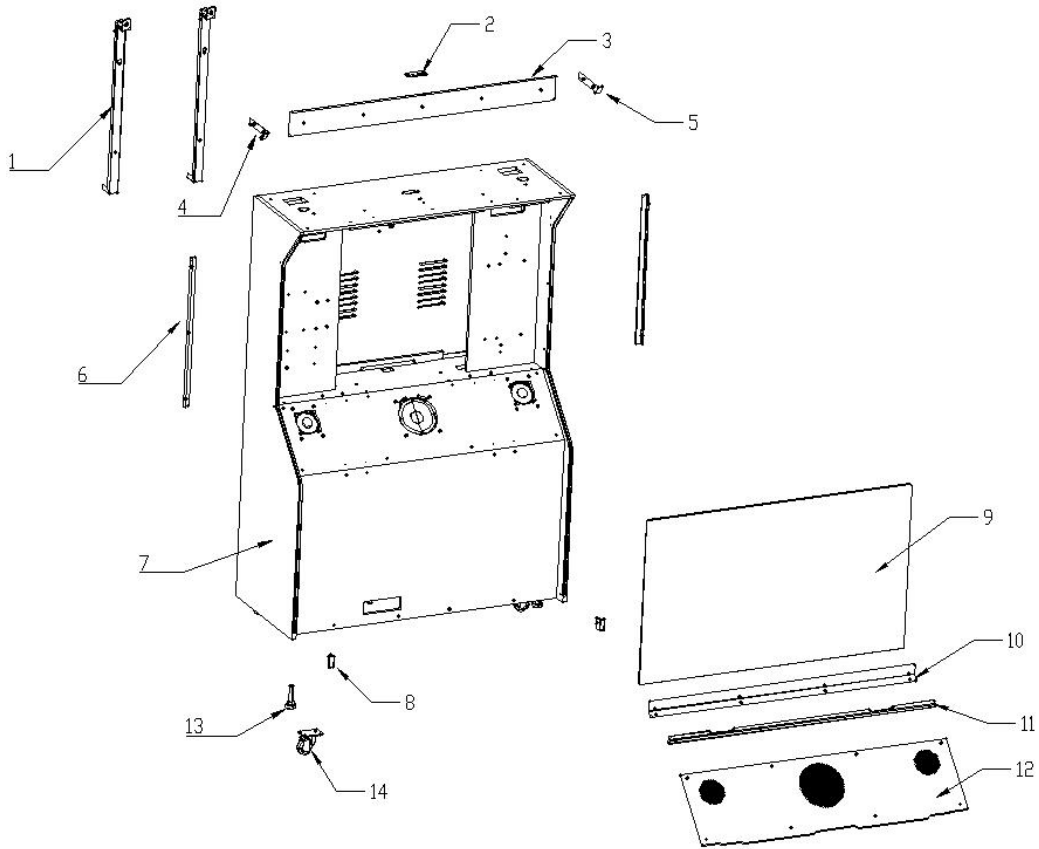
No.	Part No.	Code No.	Name	Version	Qty
1	M164-0139-00	202.4.2437.234	Top light frame(purple)	1.1	1
	M164-0202-00	202.4.2437.235	Top light frame(orange)	1.1	1
2	M164-0145-00	205.4.2437.001A	LOGO marquee	1.1	1
	M164-0203-00	205.4.2437.801	LOGO marquee(Orange)	1.1	1
3	M164-0144-00	206.4.2437.030	Mirror light PVC	1.1	2
4	M164-0143-00	206.4.2437.057	R round plastic	1.1	1
5	M164-0142-00	206.4.2437.056	L round plastic	1.1	1
6	M164-0140-00	206.4.2437.055	Outside plastic	1.1	2

9.3 Marquee Assembly



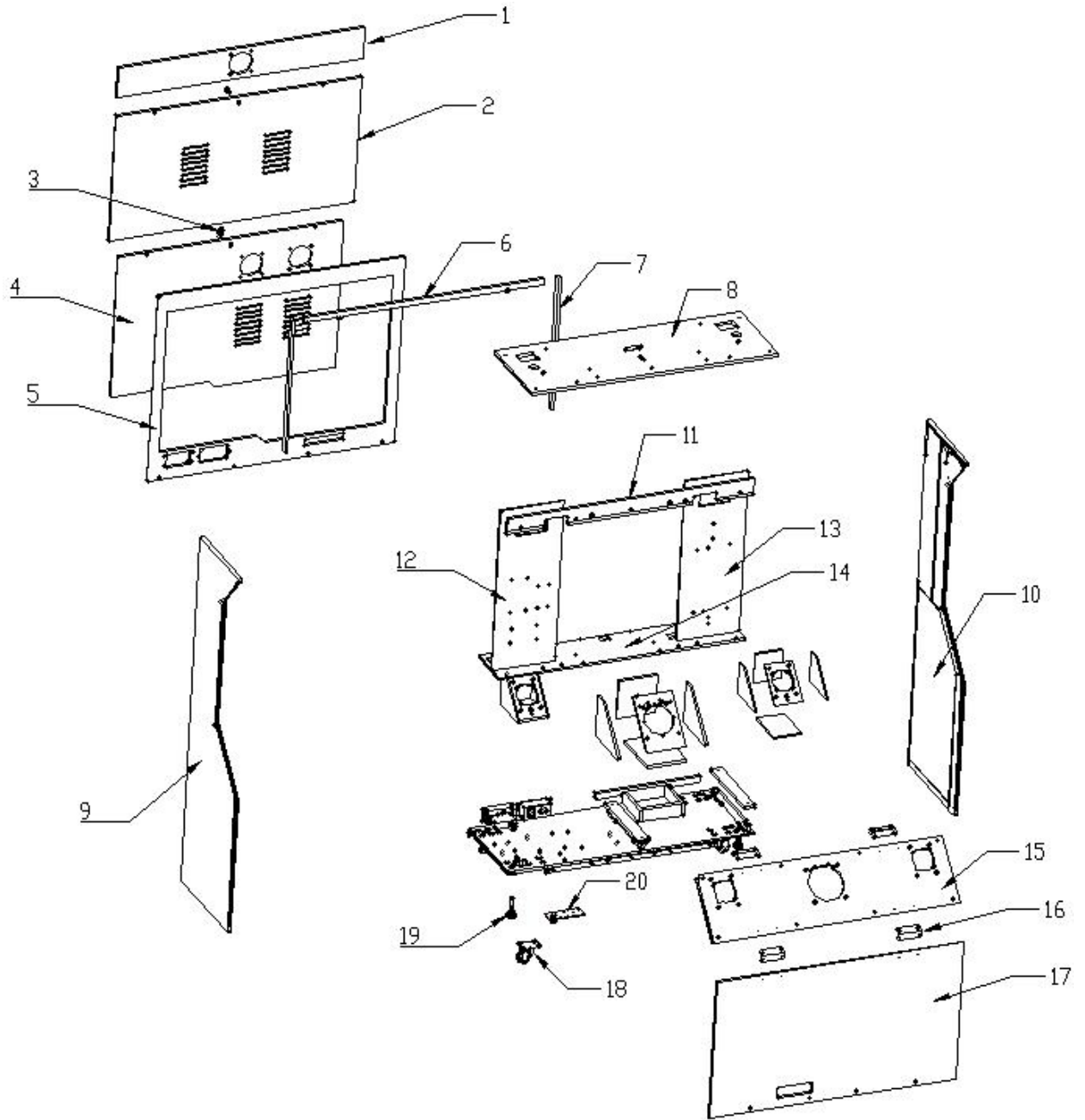
No.	Part No.	Code No.	Name	Version	Qty
1	M164-0404-00	202.4.2437.187	Fire press plate	1.1	2
2	M164-0403-00	202.4.2437.186	Base board mount bracket	1.1	2
3	M164-0413-00	205.4.2437.805	L side fire plastic	1.1	1
4	M164-0414-00	205.4.2437.806A	R side fire plastic	1.1	1
5	M164-0410-00	202.4.2437.220	Wiring cover	1.1	1
6	M164-0401-00	203.4.2437.096	Twin marquee L board	1.1	1
7	M164-0410-00	202.4.2437.220	Wiring cover	1.1	1
8	M164-0412-00	205.4.2437.804	L side character plastic	1.1	1
9	M164-0411-00	205.4.2437.803	R side character plastic	1.1	1
10	M164-0405-00	202.4.2437.188	Mid marquee base bracket	1.1	1
11	M164-0406-00	206.4.2437.073	Marquee light plastic up	1.1	1
12	M164-0408-00	206.4.2437.075	Marquee light plastic L	1.1	1
13	M164-0409-00	206.4.2437.076	Marquee light plastic R	1.1	1
14	M164-0407-00	206.4.2437.074	Marquee light plastic down	1.1	1
15	M164-0415-00	205.4.2437.807	Mid marquee plastic	1.1	1

9.4 Main Cabinet

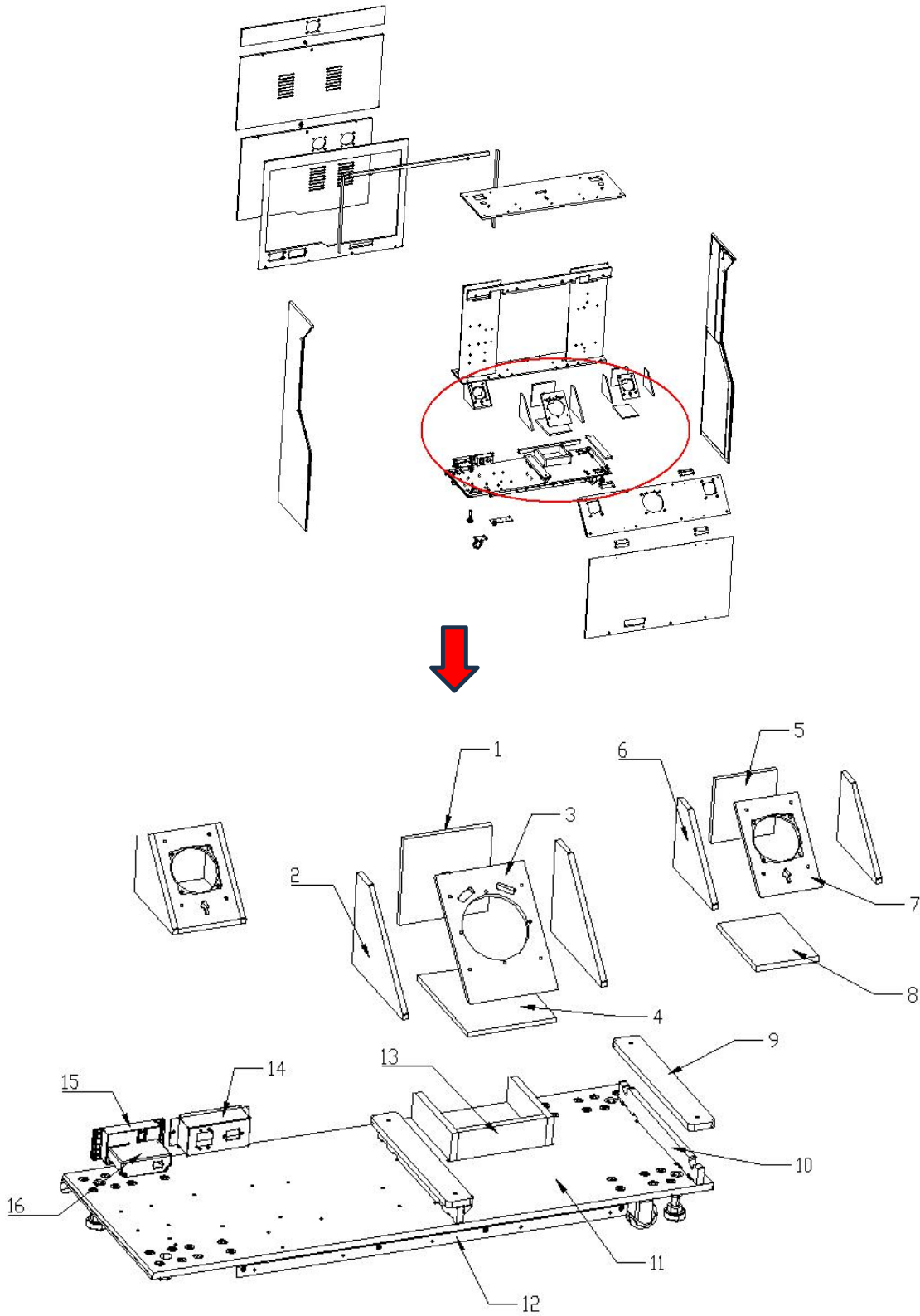


No.	Part No.	Code No.	Name	Version	Qty
1	M164-0147-00	202.4.2437.148	Monitor support plate	1.1	2
2	M164-0146-00	202.4.2437.185	Top connect light plate	1.1	1
3	M164-0151-00	202.4.2437.150	Monitor upper plate	1.1	1
4	M164-0154-00	202.4.2503.003	Side light pressing plate L	1.1	1
5	M164-0155-00	202.4.2503.004	Side light pressing plate R	1.1	1
6	M164-0153-00	202.4.2437.152	Monitor side pressing plate	1.1	2
7	M164-0101-00	299.4.2437.045	monitor cabinet wooden case	1.1	1
8	M164-0156-00	202.4.2437.104	Side light pressing plate bottom	1.1	2
9	M164-0150-00	206.4.2437.078	Glass	1.1	1
10	M164-0148-00	202.4.2437.149	Glass back plate	1.1	1
11	M164-0152-00	202.4.2437.151	Monitor bottom plate	1.1	1
12	M164-0171-00	205.4.2437.602A	Panel plastic	1.1	1
	M164-0204-00	205.4.2437.802	Panel plastic Orange	1.1	1

9.5 Main Cabinet Wooden Case

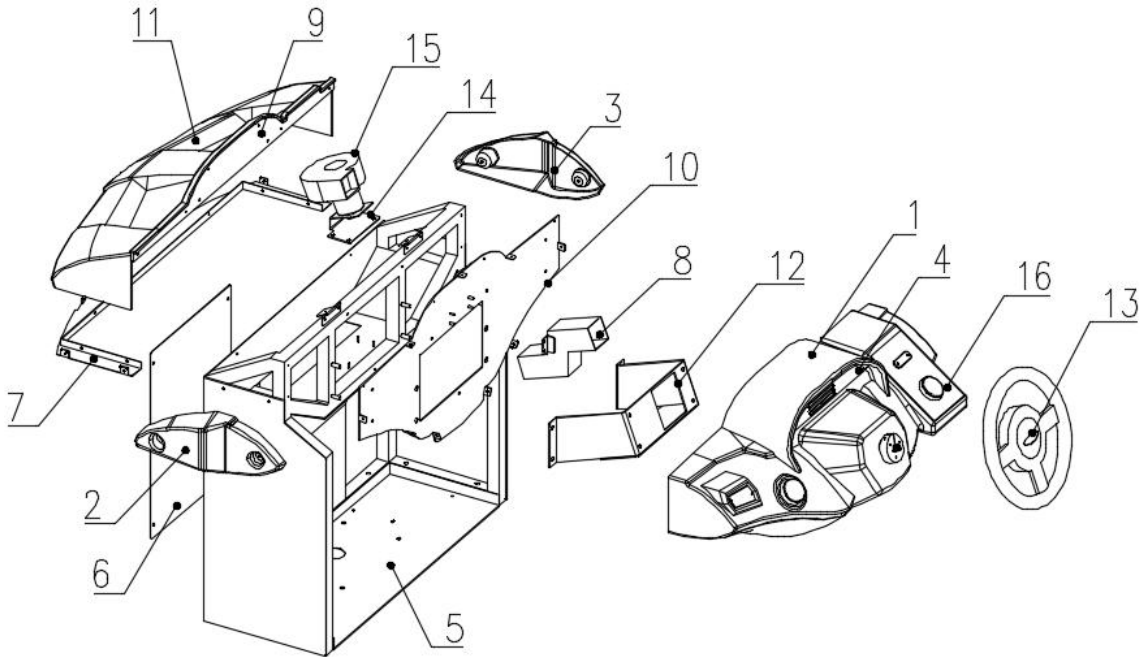


No.	Part No.	Code No.	Name	Version	Qty
1	M164-0114-00	203.4.2437.095	Back up board	1.1	1
2	M164-0127-00	203.4.2437.074	Back door upper	1.1	1
3	M164-0133-00	2.53.00171001	171A lock	1.1	2
4	M164-0128-00	203.4.2437.075	Back door bottom	1.1	1
5	M164-0113-00	203.4.2437.094	Back bottom board	1.1	1
6	M164-0115-00	203.4.2437.062	Upper door block board(h)	1.1	1
7	M164-0116-00	203.4.2437.063	Upper door block board(v)	1.1	2
8	M164-0112-00	203.4.2437.093	Top board	1.1	1
9	M164-0102-00	203.4.2437.049	L side board	1.1	1
10	M164-0103-00	203.4.2437.050	R side board	1.1	1
11	M164-0111-00	203.4.2437.058	Front upper board	1.1	1
12	M164-0117-00	203.4.2437.064	Vertical board L	1.1	1
13	M164-0118-00	203.4.2437.065	Vertical board R	1.1	1
14	M164-0110-00	203.4.2437.057	Mid horizontal board	1.1	1
15	M164-0109-00	203.4.2437.056	Front slanting board	1.1	1
16	M164-0137-00	202.4.2437.092	Wooden strengthen plate	1.1	4
17	M164-0108-00	203.4.2437.055	Front bottom board	1.1	1
18	M164-0129-00	2.55.01.000047	2.5" caster	1.1	4
19	M164-0132-00	2.60.00008000	Leveller	1.1	4
20	M164-0130-00	2.60.00010000	2.5" caster plate	1.1	4



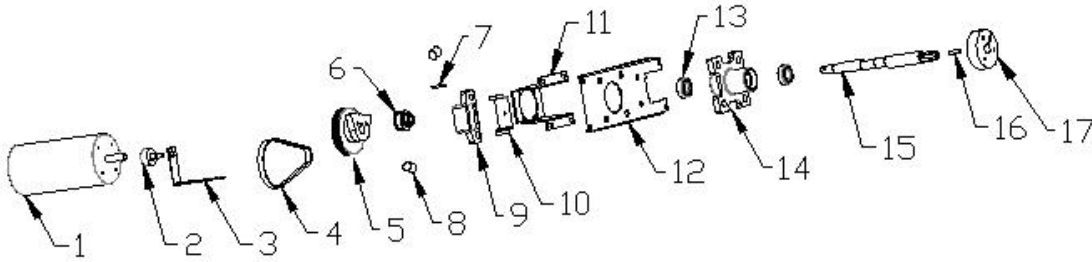
No.	Part No.	Code No.	Name	Version	Qty
1	M164-0126-00	203.4.2437.073	Woofers back board	1.2	1
2	M164-0125-00	203.4.2437.072	Woofers Side board	1.1	2
3	M164-0123-00	203.4.2437.070	Woofers upper board	1.1	1
4	M164-0124-00	203.4.2437.071	Woofers base board	1.1	1
5	M164-0122-00	203.4.2437.069	speakers back board	1.2	2
6	M164-0121-00	203.4.2437.068	Speakers side board	1.2	4
7	M164-0119-00	203.4.2437.066	Speakers upper board	1.2	2
8	M164-0120-00	203.4.2437.067	Speakers base board	1.2	2
9	M164-0105-00	203.4.2437.052	Base board 1	1.1	2
10	M164-0106-00	203.4.2437.053	Base board 2	1.1	2
11	M164-0104-00	203.4.2437.051	Base board	1.2	1
12	M164-0136-00	202.4.2437.146	Base board strengthen plate	1.2	1
13	M164-0107-00	203.4.2437.054	Base board 3	1.1	3
14	M164-0166-00	202.4.2141.249	Power box plate	1.1	1
15	M164-0168-00	2.60.00042002B	Power box cover	1.1	1
16	M164-0167-00	2.60.00042001B	Power box	1.1	1

9.6 Control Panel Assy



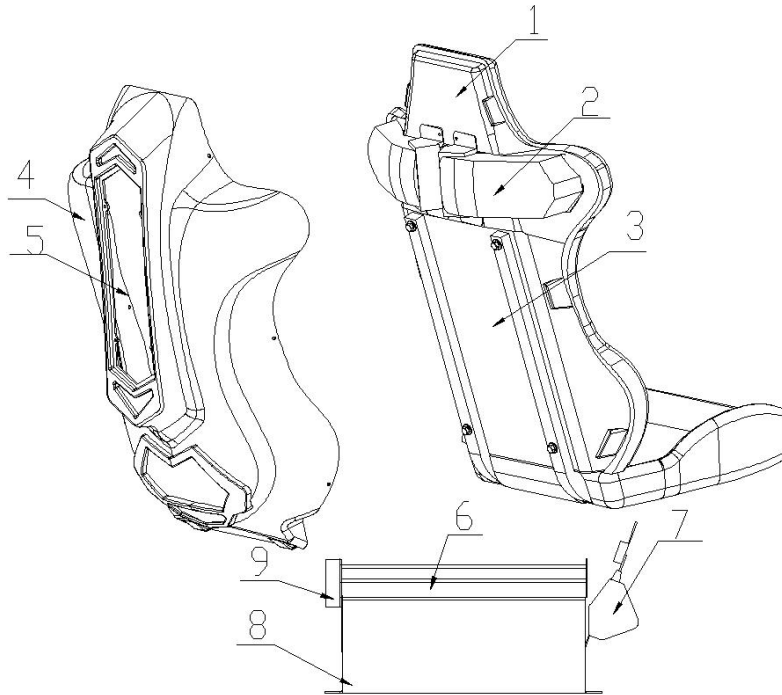
No.	Part No.	Code No.	Name	Version	Qty
1	M164-0501-00	206.4.2437.066	Panel cover(purple)	1.1	1
	M164-0601-00	206.4.2437.070	Panel cover(orange)	1.1	1
2	M164-0502-00	206.4.2437.043	Panel side cover L	1.1	1
3	M164-0504-00	206.4.2437.044	Panel side cover R	1.1	1
4	M164-0505-00	206.4.1830.026	Blower cover plate	1.1	1
5	M164-0506-00	202.4.2437.193	Panel bracket	1.1	1
6	M164-0507-00	202.4.2228.374	Panel cover plate	1.1	1
7	M164-0508-00	202.4.2228.422	Moulding bracket 2	1.1	1
8	M164-0509-00	202.4.1830.017	Blower plate	1.1	1
9	M164-0510-00	206.4.1830.021	blanking plate	1.1	1
10	M164-0511-00	202.4.2437.178	Moulding bracket	1.1	1
11	M164-0512-00	206.4.2437.067	Back cover(purple)	1.1	1
	M164-0602-00	206.4.2437.071	Back cover(orange)	1.1	1
12	M164-0513-00	202.4.1830.014	Motor bracket	1.1	1
13	M164-0542-00	4.11.06.000146	Steering wheel	1.1	1
14	M164-0534-00	202.4.2437.177	Blower bracket	1.1	1
15	M164-0535-00	2.34.01.000025	Blower	1.1	1
16	M164-1758-00	2.24.01.000005	white button	1.1	1

9.7 Steering Wheel



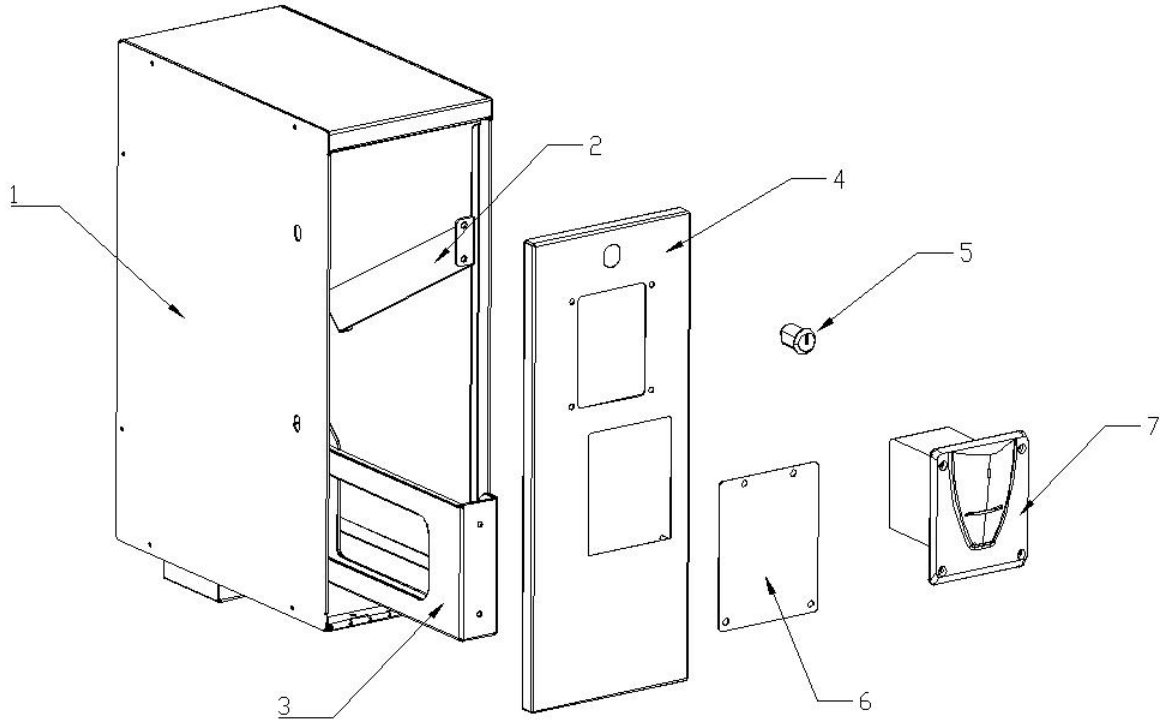
No.	Part No.	Code No.	Name	Version	Qty
1	M164-0530-00	2.34.04.000249	DC motor	1.1	1
2	M164-0531-00	2.25.01000045	POT	1.1	1
3	M164-0519-00	202.4.1606B.042	POT mounting plate	1.1	1
4	M164-0532-00	2.65.07.000009	Stair type synchronous	1.1	1
5	M164-0522-00	299.4.1606B.011	Belt synchronous wheel	1.1	1
6	M164-0527-00	202.4.1606B.036	Synchronous wheel	1.1	1
7	M164-0539-00	202.4.1606B.033A	Flat key 1	1.1	1
8	M164-0521-00	206.4.1606B.026	Anti-shake PU	1.1	2
9	M164-0520-00	202.4.1606B.032	Limit block	1.1	1
10	M164-0518-00	202.4.1606B.041	Adjust plate	1.1	1
11	M164-0516-00	202.4.1606B.039	Motor mounting plate	1.1	1
12	M164-0517-00	202.4.1606B.040	Connect fixing plate	1.1	1
13	M164-0533-00	201.06.000082	Bearing(6002ZZ)	1.1	2
14	M164-0529-00	202.4.1606B.037	Bearing plate	1.1	1
15	M164-0515-00	202.4.2437.144	Transmission shaft	1.1	1
16	M164-0528-00	202.4.1606B.034A	Flat key 2	1.1	1
17	M164-0540-00	202.4.2437.145	Steering wheel block	1.1	1

9.8 Seat Assy



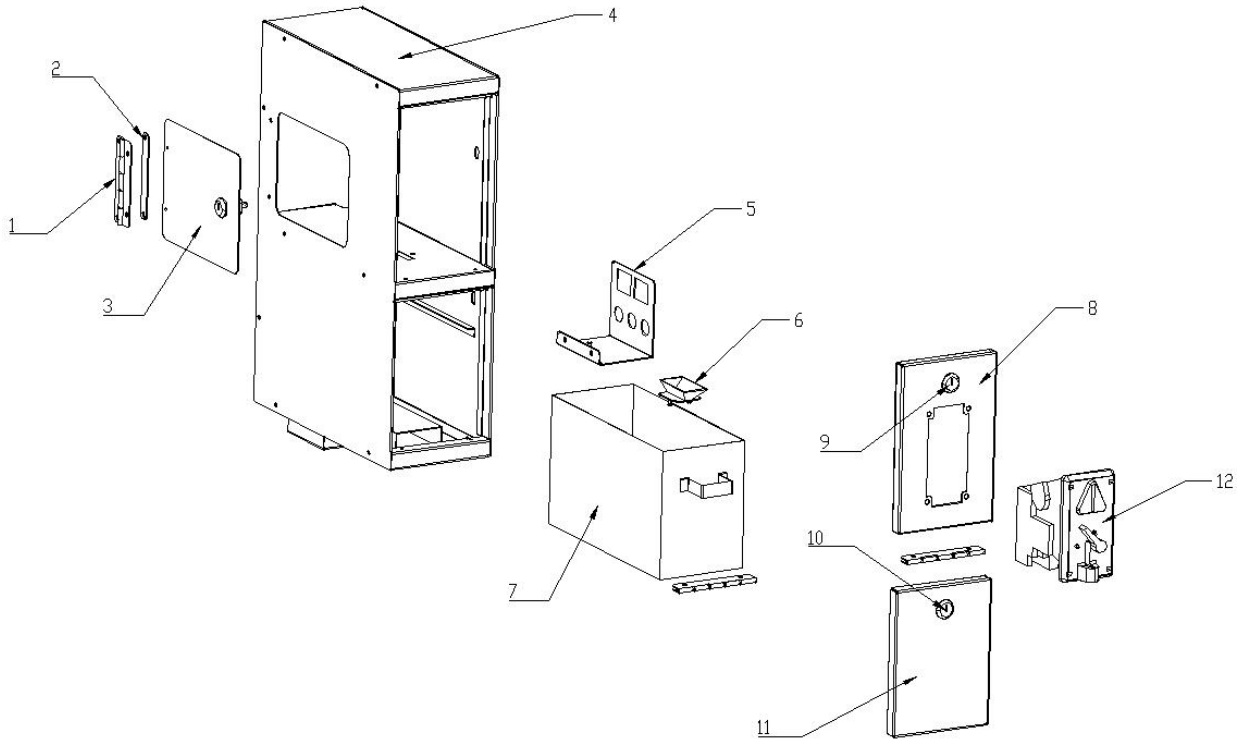
No.	Part No.	Code No.	Name	Version	Qty
1	M164-0701-00	206.4.1606A.024A	Seat	1.1	1
2	M164-0702-00	202.4.1606A.075	Speaker press plate	1.1	2
3	M164-0703-00	202.4.1606A.076	Light strip bracket	1.1	1
4	M164-0706-00	206.4.2437.068	Seat back shell	1.1	1
	M164-0801-00	206.4.2437.072	Seat back shell(orange)	1.1	1
5	M164-0707-00	205.4.2437.902B	Back shell decal plastic	1.1	1
	M164-0802-00	205.4.2437.810A	Back shell decal plastic(orange)	1.1	1
6	M164-0709-00	202.4.1830.067	Shaking motor fixing plate	1.1	1
7	M164-0704-00	2.51.04.000008	Safety belt	1.1	1
8	M164-0705-00	202.4.1606A.037A	Seat base plate	1.1	1
9	M164-0708-00	202.4.1830.031	Safety belt strengthen plate	1.1	1

9.9 Ticket Box Bracket Assy



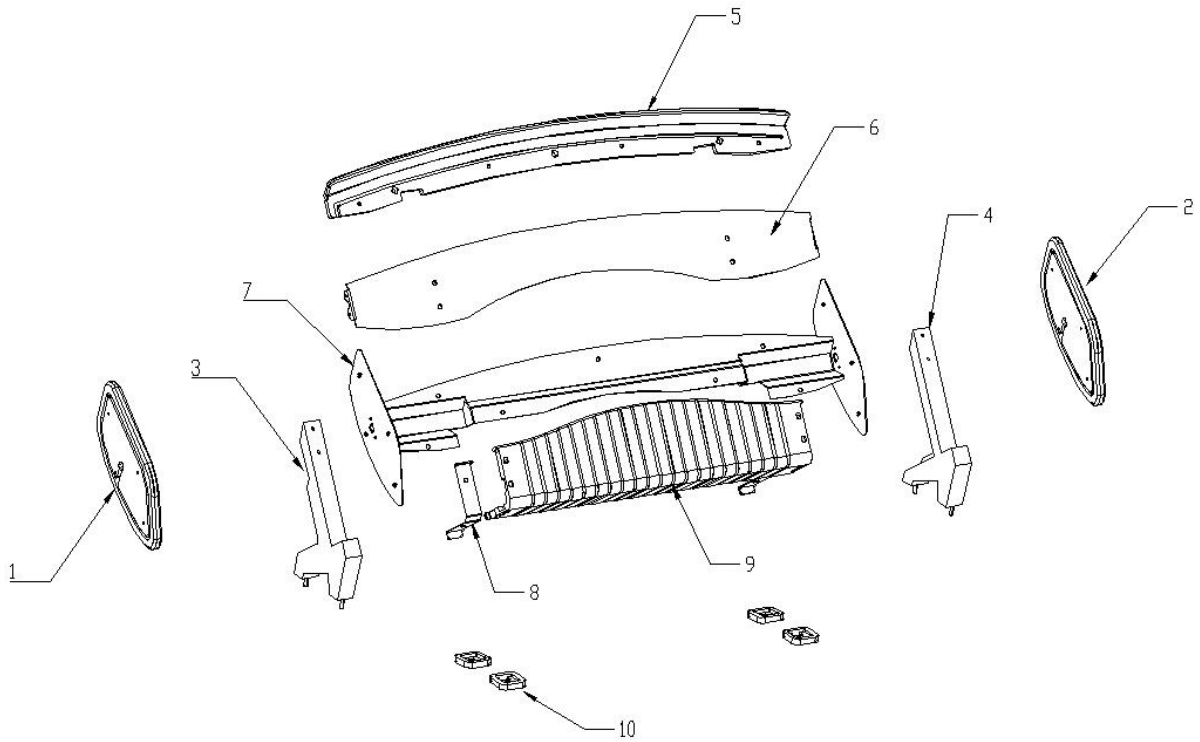
No.	Part No.	Code No.	Name	Version	Qty
1	M164-1401-00	202.4.2437.212	Ticket box frame	1.1	1
2	M164-1407-00	202.4.2437.218	Door plate limit support plate	1.1	1
3	M164-1409-00	2.60.00075000	Ticket box	1.1	1
4	M164-1406-00	202.4.2437.217	Ticket box door plate	1.1	1
5	M164-0133-00	2.53.00171001	171A lock	1.1	1
6	M164-1408-00	202.4.2437.219	DBV blank plate	1.1	1
7	M164-1742-00	2.31.00000015	Ticket dispenser	1.1	1

9.10 Coin Box Bracket Assembly



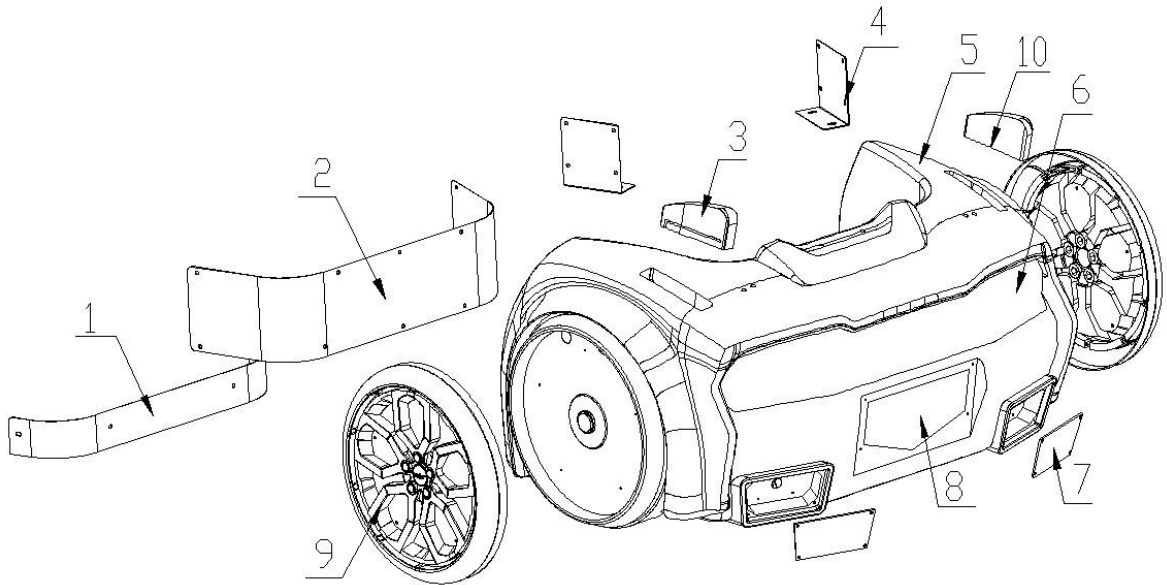
No.	Part No.	Code No.	Name	Version	Qty
1	M164-1307-00	202.4.2209.085	Door chain	1.1	3
2	M164-1314-00	202.4.2437.211	Door chain pad plate	1.1	1
3	M164-1315-00	202.4.2437.210	Counter plate	1.2	1
4	M164-1301-00	202.4.2437.200	Coin box frame	1.1	1
5	M164-1316-00	202.4.2437.209	Counter bracket	1.1	1
6	M164-1310-00	2.60.00046002A	Coin outer box hopper	1.1	1
7	M164-1311-00	202.4.2437.207	Coin inner box	1.1	1
8	M164-1308-00	202.4.2437.206	Coin door plate	1.1	1
9	M164-1309-00	2.53.00171001	171A lock	1.1	2
10	M164-1313-00	2.53.00172001	171B lock	1.1	1
11	M164-1312-00	202.4.2437.208	Coin box door plate	1.1	1
12	M164-1731-00	2.23.06000022	Coin mechanism	1.1	1

9.11 Tail Wing Assy



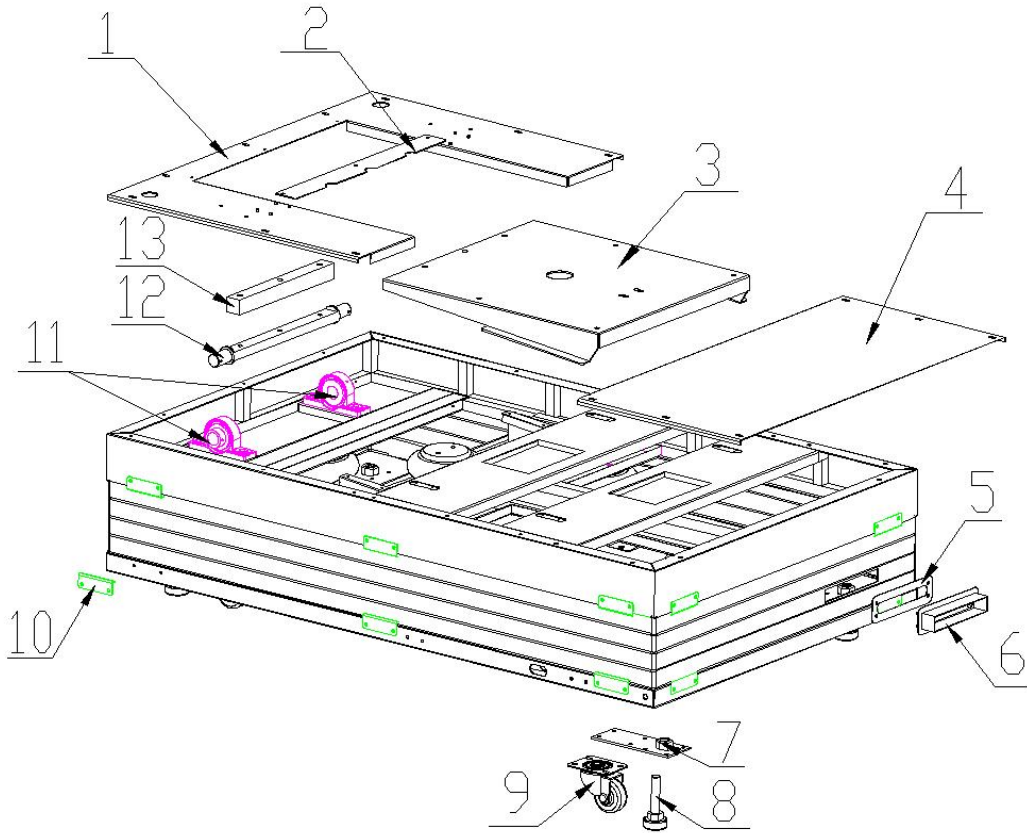
No.	Part No.	Code No.	Name	Version	Qty
1	M164-0908-00	206.4.2437.048	Tail wing side light plastic L	1.1	1
2	M164-0910-00	206.4.2437.052	Tail wing side light plastic R	1.1	1
3	M164-0901-00	202.4.2437.138	Tail wing bracket L	1.1	1
4	M164-0902-00	202.4.2437.139	Tail wing bracket R	1.1	1
5	M164-0906-00	206.4.2437.047	Tail wing blow plate	1.1	1
6	M164-0907-00	202.4.2437.142	Tail wing bottom cover plate	1.1	1
	M164-1002-00	202.4.2437.183	Tail wing bottom cover plate(orange)	1.1	1
7	M164-0905-00	202.4.2437.141	Tail wing connect plate	1.1	1
	M164-1001-00	202.4.2437.182	Tail wing connect plate(orange)	1.1	1
8	M164-0904-00	202.4.2437.140	Light plastic light cover plate	1.1	2
9	M164-0903-00	205.4.2437.901B	Tail wing light plastic	1.1	1
10	M164-0909-00	206.4.2437.069	Pad	1.1	4

9.12 Car Back Side Assy



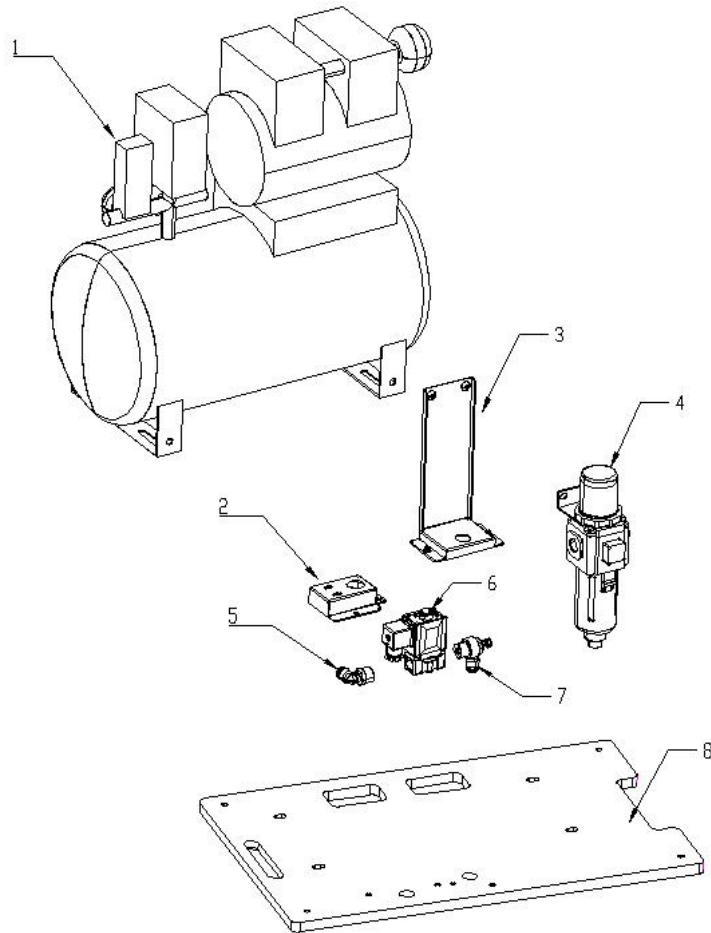
No.	Part No.	Code No.	Name	Version	Qty
1	M164-1107-00	202.4.1606B.018	Tail marquee bottom fixing plate	1.1	1
2	M164-1109-00	202.4.1606B.017A	Tail marquee upper fixing plate	1.1	1
3	M164-1106-00	206.4.2437.053	Tail side light plastic L	1.1	1
4	M164-1108-00	202.4.1606B.019	Tail marquee L&R fixing plate	1.1	2
5	M164-1101-00	206.4.2437.050	Tail moulding PE (purple)	1.1	1
	M164-1201-00	202.4.2437.184	Tail moulding PE (orange)	1.1	1
6	M164-1102-00	206.4.1606B.003	Tail back cover plastic	1.1	1
7	M164-1104-00	206.4.1606B.004	Tail cover side light plastic	1.1	2
8	M164-1103-00	205.4.2437.903B	Tail number plastic	1.1	1
9	M164-1105-00	206.4.1606B.005	Wheel	1.1	2
10	M164-1110-00	206.4.2437.054	Tail side light plastic R	1.1	1

9.13 Motion Platform Assy



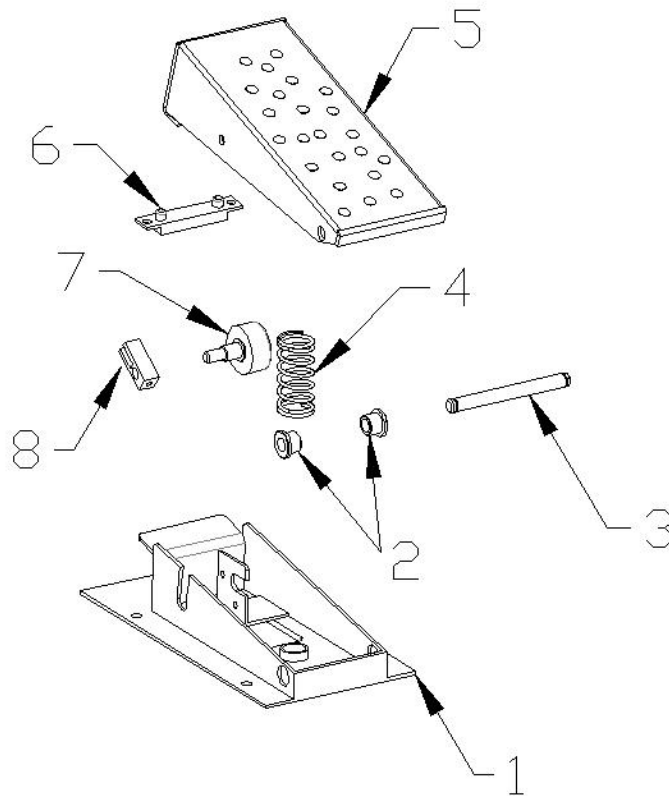
No.	Part No.	Code No.	Name	Version	Qty
1	M164-1518-00	202.4.1830.040	Cover plate 2	1.1	1
2	M164-1519-00	202.4.1606A.030	Cover plate 3	1.1	1
3	M164-1505-00	202.4.1606B.008	Seat motion platform bracket	1.1	1
4	M164-1515-00	202.4.1606B.005	Cover plate 1	1.1	1
5	M164-1525-00	202.4.1606A.033	Wiring plate 2	1.1	1
6	M164-1524-00	202.4.1606A.032	Wiring plate 1	1.1	1
7	M164-0130-00	2.60.00010000	2.5" caster plate	1.1	4
8	M164-1513-00	2.51.00.010025	Leveller	1.1	4
9	M164-0129-00	2.55.01.000047	2.5" caster	1.1	4
10	M164-1521-00	202.4.1606A.031	Press plate	1.1	20
11	M164-1508-00	201.06.13.0030	Bearing(UCP205)	1.1	2
12	M164-1507-00	202.4.1606A.078	Rotate axle	1.2	1
13	M164-1506-00	202.4.1606A.079	Support block	1.1	1

9.14 Air Compressor



No.	Part No.	Code No.	Name	Version	Qty
1	M164-0302-00	4.06.11.01.0211	Air compressor (110V)	1.2	1
	M164-0303-00	4.06.11.01.0203	Air compressor (220V)	1.1	1
2	M164-0304-00	202.4.2141.251	Pressure valve plate 1	1.1	1
3	M164-0305-00	202.4.2141.252A	Pressure valve plate 2	1.1	1
4	M164-0309-00	2.51.01.13.0074	Adjust filter	1.1	1
5	M164-0310-00	2.51.01.11.0131	10mm pipe	1.1	1
6	M164-0306-00	2.51.01.12.3010	Liquid control valve	1.2	1
7	M164-0307-00	2.51.01.12.3008	Speed adjust valve	1.1	1
8	M164-0301-00	203.4.2437.076	Air compressor mount plate	1.2	1

9.15 Gas Pedal



No.	Part No.	Code No.	Name	Version	Qty
1	M164-1602-00	202.4.1606B.045	Gas pad plate	1.1	1
2	M164-1607-00	202.4.1606B.048	Rotating Cu	1.1	2
3	M164-1603-00	202.4.1606B.046A	Gas rotate shaft	1.1	1
4	M164-1604-00	202.4.1606B.043	Spring	1.1	1
5	M164-1601-00	202.4.1606B.044	Gas pedal	1.1	1
6	M164-1605-00	206.4.1606B.025	Rubber PU	1.1	1
7	M164-1613-00	2.25.01000044	POT	1.1	1
8	M164-1606-00	202.4.1606B.047	Rotating block	1.1	1

9.16 Decals



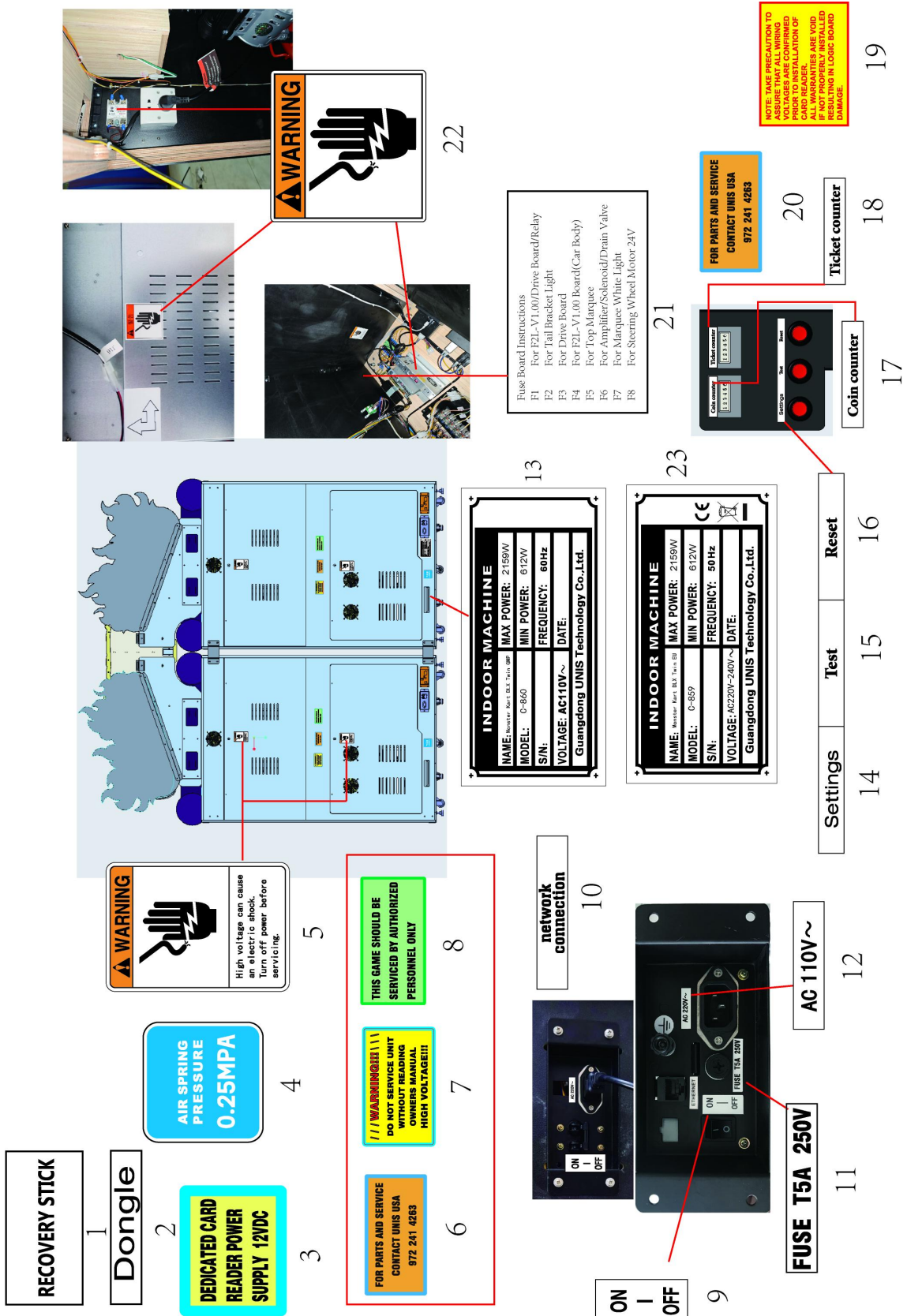
Monster Kart DLX Twin GMP Manual

No.	Part No.	Code No.	Name	Version	Qty
1	M164-1801-00	205.4.2437.605A	Marquee round decal(purple)	1.1	1
2	M164-0145-00	205.4.2437.001A	LOGO marquee	1.1	1
3	M164-0171-00	205.4.2437.602A	Panel plastic	1.1	1
4	M164-0707-00	205.4.2437.902B	Back shell decal plastic	1.1	1
5	M164-1821-00	205.4.2437.617A	Tail wing L side decal(purple)	1.1	1
6	M164-1819-00	205.4.2437.616A	Tail wing R side decal(purple)	1.1	1
7	M164-1816-00	205.4.2437.613A	Panel upper decal(purple)	1.1	1
8	M164-0537-00	205.4.2437.904	Card reader cover plate	1.1	1
9	M164-1824-00	205.4.2437.618	Seat back decal	1.1	1
10	M164-1818-00	205.4.2437.614	Panel R side plate decal	1.1	1
11	M164-1827-00	205.4.2437.632A	Seat warning decal	1.1	1
12	M164-1828-00	205.4.2437.635A	Do not press decal	1.1	1
13	M164-1103-00	205.4.2437.903B	Tail number plastic	1.1	1
14	M164-1823-00	205.4.2437.205A	Button decal	1.1	1
15	M164-1809-00	205.4.2437.609A	Monitor front decal(purple)	1.1	1
16	M164-1807-00	205.4.2437.608A	Panel L side decal(purple)	1.1	1
17	M164-1805-00	205.4.2437.607A	Panel R side decal(purple)	1.1	1
18	M164-1813-00	205.4.2437.611A	Monitor L decal(purple)	1.1	1
19	M164-1811-00	205.4.2437.610A	Monitor R decal(purple)	1.1	1
20	M164-1803-00	205.4.2437.606B	Marquee button decal(purple)	1.1	1
21	M164-1815-00	205.4.2437.612	Side logo	1.1	2



Monster Kart DLX Twin GMP Manual

No.	Part No.	Code No.	Name	Version	Qty
1	M164-0413-00	205.4.2437.805	L side fire plastic	1.1	1
2	M164-0414-00	205.4.2437.806A	R side fire plastic	1.1	1
3	M164-0412-00	205.4.2437.804	L side character plastic	1.1	1
4	M164-0411-00	205.4.2437.803	R side character plastic	1.1	1
5	M164-0204-00	205.4.2437.802	Panel plastic Orange	1.1	1
6	M164-0802-00	205.4.2437.810A	Back shell decal plastic(orange)	1.1	1
7	M164-1804-00	205.4.2437.812B	Marquee button decal(orange)	1.1	1
8	M164-1822-00	205.4.2437.820	Tail wing L side decal(orange)	1.1	1
9	M164-1820-00	205.4.2437.819	Tail wing R side decal(orange)	1.1	1
10	M164-1817-00	205.4.2437.818	Panel upper decal(orange)	1.1	1
11	M164-1808-00	205.4.2437.814B	Panel L side decal(orange)	1.1	1
12	M164-1806-00	205.4.2437.813	Panel R side decal(orange)	1.1	1
13	M164-1810-00	205.4.2437.815A	Monitor front decal(orange)	1.1	1
14	M164-1814-00	205.4.2437.817A	Monitor L decal(orange)	1.1	1
15	M164-1812-00	205.4.2437.816A	Monitor R decal(orange)	1.1	1
16	M164-1802-00	205.4.2437.811B	Marquee round decal(orange)	1.1	1
17	M164-0415-00	205.4.2437.807	Mid marquee plastic	1.1	1
18	M164-0203-00	205.4.2437.801	LOGO marquee(Orange)	1.1	1

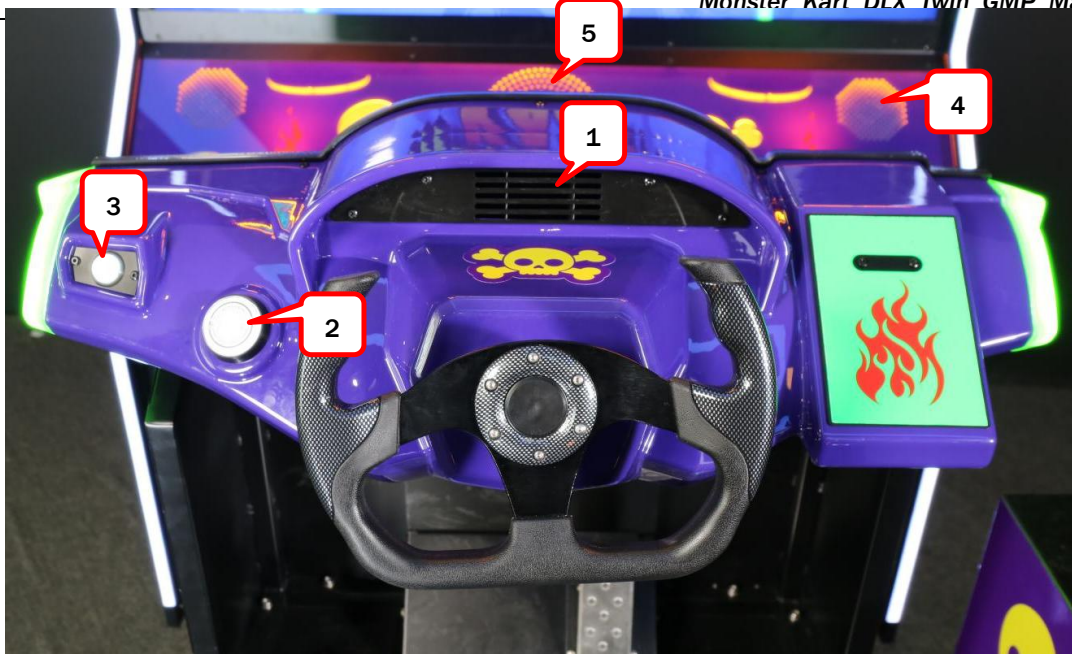


No.	Part No.	Code No.	Name	Version	Qty
1	M164-1830-00	2.66.01.100283	Recovery stick decal	1.1	1
2	M164-1829-00	2.56.00.000093	Dongle decal	1.1	2
3	M164-1838-00	2.56.00.000121	Adapter decal	1.1	2
4	M164-1825-00	205.4.2437.628	Air compressor decal	1.1	2
5	M164-1832-00	2.56.00.000037	High voltage label(l)	1.1	4
6	M164-1835-00	2.56.00.000095A	Service decal(l)	1.1	2
7	M164-1834-00	2.56.00.000067A	Maintenance decal 2	1.1	2
8	M164-1833-00	2.56.00.000042A	Maintenance decal 1	1.1	2
9	M164-1840-00	2.56.00.000017	Power sw decal	1.1	4
10	M164-1842-00	2.56.00.000097	Network connect decal	1.1	2
11	M164-1841-00	2.56.00.000074	Fuse decal	1.1	2
12	M164-1843-00	2.56.00.000071	110V label	1.1	4
13	M164-1844-00	205.4.2437.821	110V nameplate	1.1	1
14	M164-1849-00	2.56.00.000092	Settings decal	1.1	2
15	M164-1847-00	2.56.00.000005	Test decal	1.1	2
16	M164-1848-00	2.56.00.000006	Reset decal	1.1	2
17	M164-1850-00	2.56.00.000001	Coin counter decal	1.1	2
18	M164-1851-00	2.56.00.000002	Ticket counter decal	1.1	2
19	M164-1852-00	2.56.00.000120	AAMA decal	1.1	2
20	M164-1836-00	2.56.00.000096A	Service decal(s)	1.1	2
21	M164-1826-00	205.4.2437.629	Fuse board decal	1.1	2
22	M164-1831-00	2.56.00.000036	High voltage label(s)	1.1	6
23	M164-1846-00	205.4.2437.822	220V nameplate	1.1	1

9.17 Electrical Component



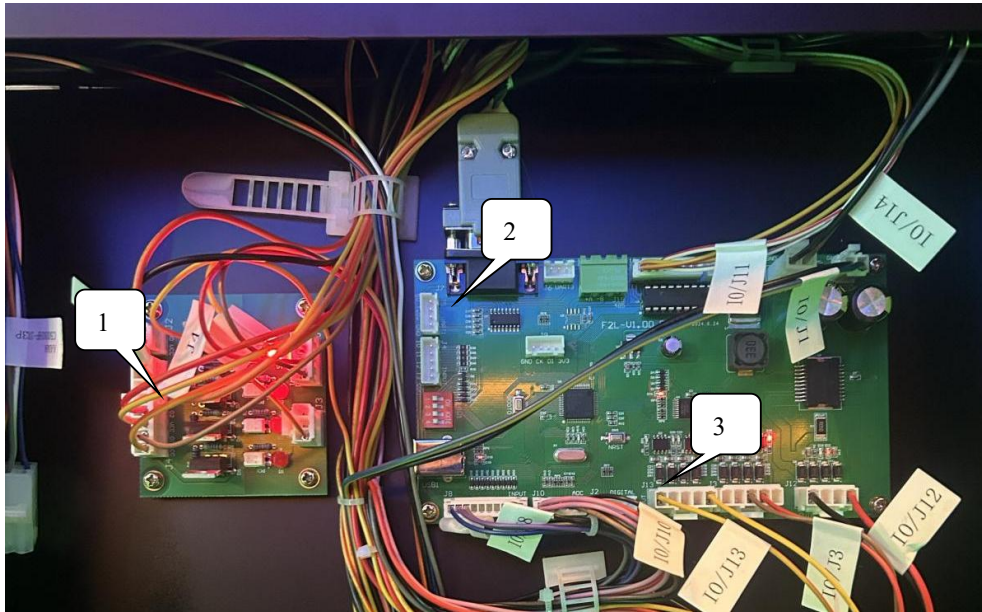
No.	Part No.	Code No.	Name	Version	Qty
1	M164-1717-00	2.20.02.015019	BG5050W white light strip	1.1	(3350mm)
2	M164-1718-00	2.20.02.020057	2835 yellow light strip	1.1	(880mm)
3	M164-1755-00	2.20.02.020056	2835 white light strip	1.1	(3050mm)
4	M164-1755-00	2.20.02.020056	2835 white light strip	1.1	(2800mm)
5	M164-1717-00	2.20.02.015019	BG5050W white light strip	1.1	(2900mm)
6	M164-1718-00	2.20.02.020057	2835 yellow light strip	1.1	(700mm)
	M164-1746-00	2.20.02.020067	2835 green light	1.1	(1150mm)
7	M164-1753-00	2.20.02.020031	5050 RGB light strip	1.2	(1900mm)
8	M164-1718-00	2.20.02.020057	2835 yellow light strip	1.1	(1260mm)
9	M164-1721-00	2.12.01055010	55" monitor	1.5	1
10	M164-1755-00	2.20.02.020056	2835 white light strip	1.2	(1050mm)
11	M164-0535-00	2.34.01.000025	Blower	1.1	1
12	M164-1718-00	2.20.02.020057	2835 yellow light strip	1.2	(600mm)
13	M164-1718-00	2.20.02.020057	2835 yellow light strip	1.2	(1200mm)
14	M164-1718-00	2.20.02.020057	2835 yellow light strip	1.2	(300mm)
15	M164-1717-00	2.20.02.015019	BG5050W white light strip	1.1	(350mm)
16	M164-1726-00	2.20.03.230017	Red cabinet light	1.1	1
17	M164-1728-00	297.4.1606B001	Light board	1.1	2
18	M164-1756-00	2.20.03.080026	5630 light	1.1	1
19	M164-1734-00	297.4.0930001	Red light	1.1	4
20	M164-1725-00	2.20.02.017021	RGB wheel light	1.1	2



No.	Part No.	Code No.	Name	Version	Qty
1	M164-0535-00	2.34.01.000025	Blower	1.1	1
2	M164-1758-00	2.24.01.000005	white button	1.1	1
	M164-1708-00	2.26.04.000006	Micro SW	1.1	1
	M164-1709-00	2.20.03.000018	LED blub	1.1	1
3	M164-1761-00	2.24.01.000066	White button	1.1	1
	M164-1708-00	2.26.04.000006	Micro SW	1.1	1
	M164-1709-00	2.20.03.000018	LED blub	1.1	1
4	M164-1730-00	2.28.01.000016	Speaker	1.1	2
5	M164-1716-00	2.28.01.000079	Speaker	1.1	1



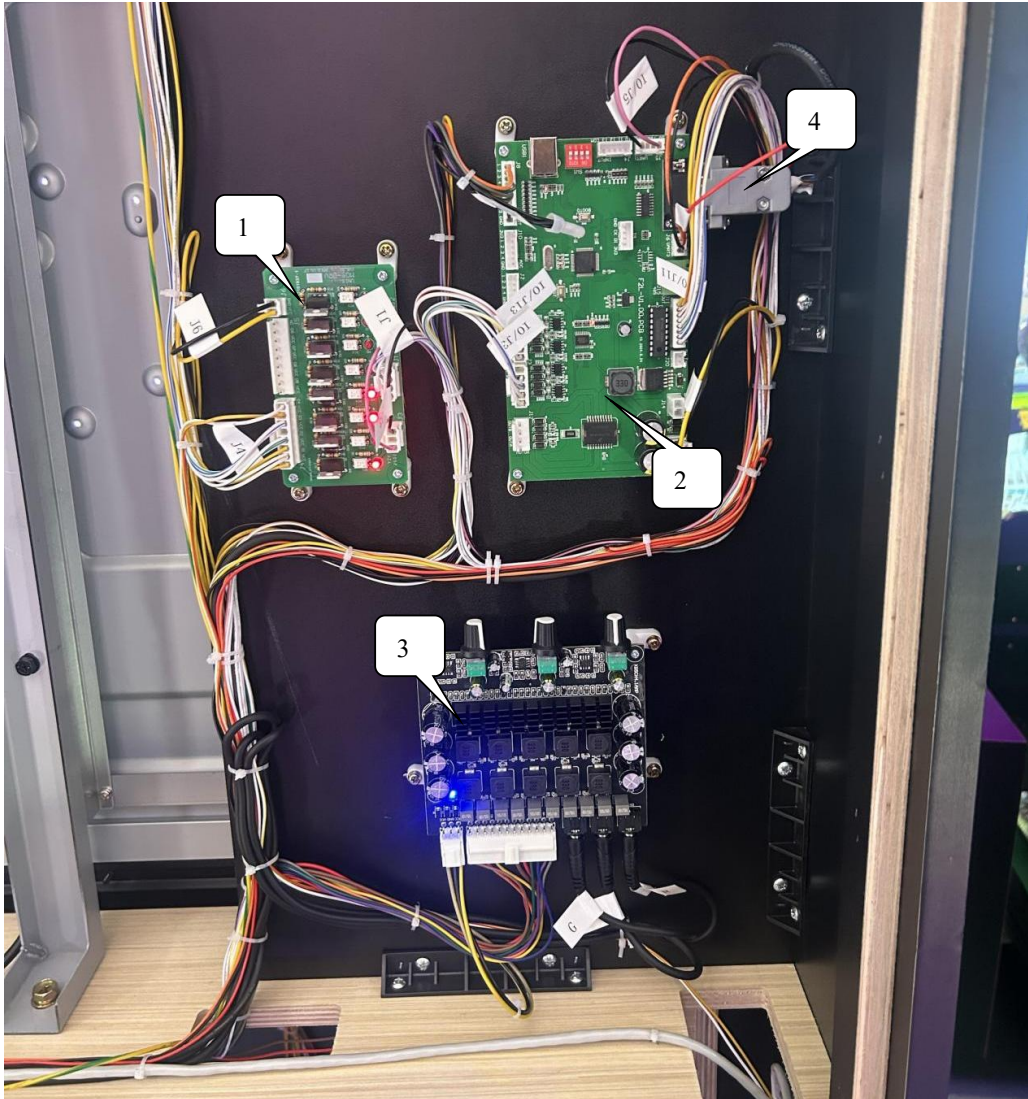
No.	Part No.	Code No.	Name	Version	Qty
1	M164-1757-00	2.28.01.000037	4" speaker	1.1	2



No.	Part No.	Code No.	Name	Version	Qty
1	M164-1752-00	297.1.1208002A	Drive board	1.1	1
2	M164-1747-00	2.33.03.000017	Serial port	1.1	2
3	M164-1724-00	297.6.2409003	IO board	1.1	2



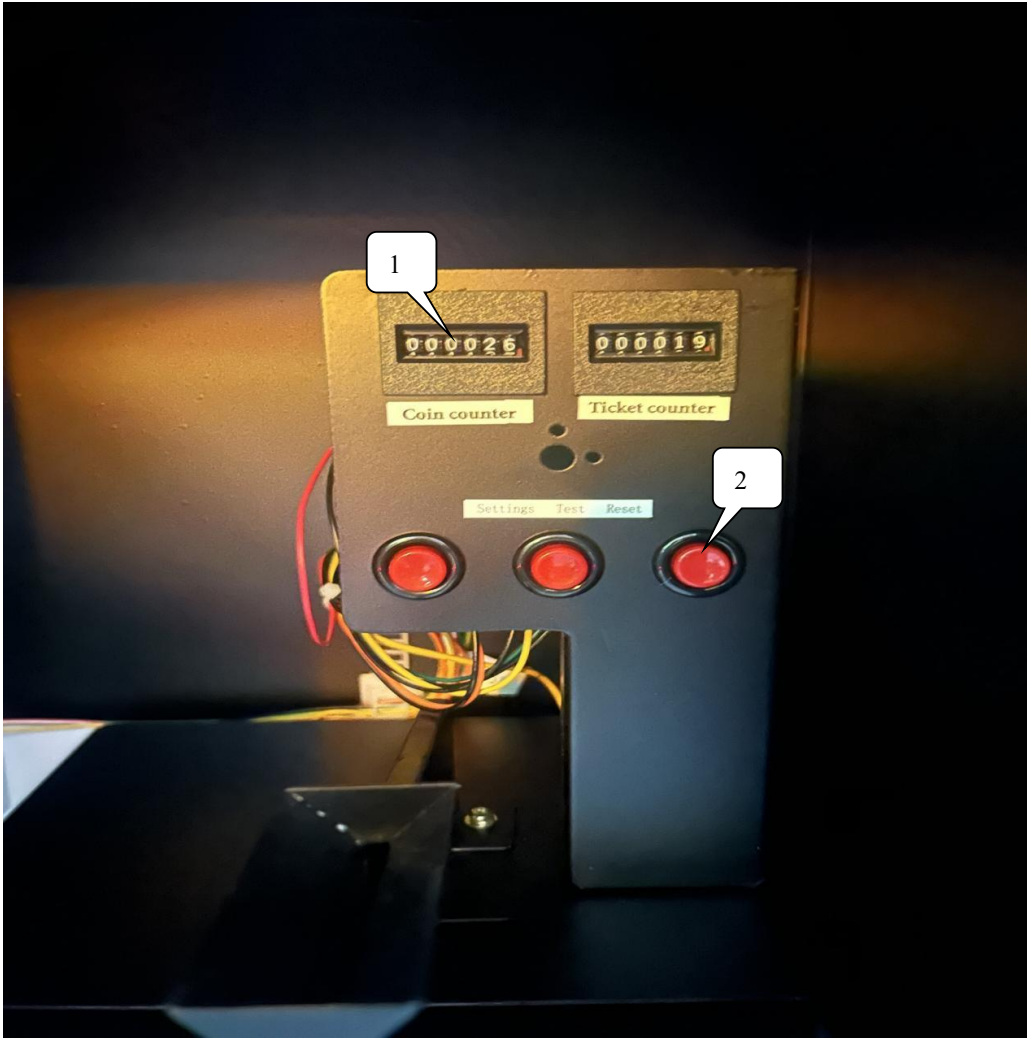
No.	Part No.	Code No.	Name	Version	Qty
1	M164-1710-00	2.33.07.060003	DP-DVI cable	1.1	1
2	M164-1714-00	2.33.05.000007	Audio cable	1.1	3
3	M164-1711-00	2.33.02.000003	Network cable	1.1	1
4	M164-1751-00	2.14.12.020010	USB-TTL plate	1.1	1
5	M164-1720-00	2.11.07.020036	Dongle	1.1	1
6	M164-1754-00	2.33.04.000100	Extend cable	1.1	1
7	M164-1722-00	2.11.02.000174	PC	1.1	1



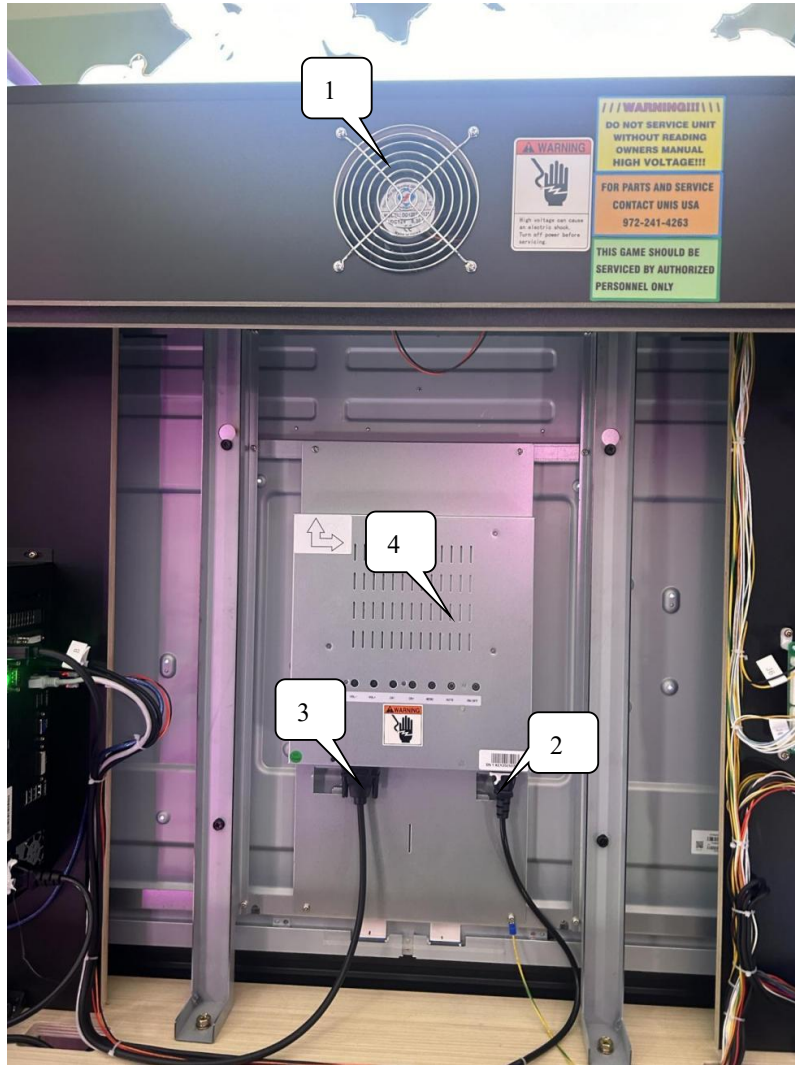
No.	Part No.	Code No.	Name	Version	Qty
1	M164-1727-00	297.9.2406003	Drive board	1.1	1
2	M164-1724-00	297.6.2409003	IO board	1.1	2
3	M164-1723-00	2.28.03.060028	Amplifier	1.1	1
4	M164-1747-00	2.33.03.000017	Serial port	1.1	2



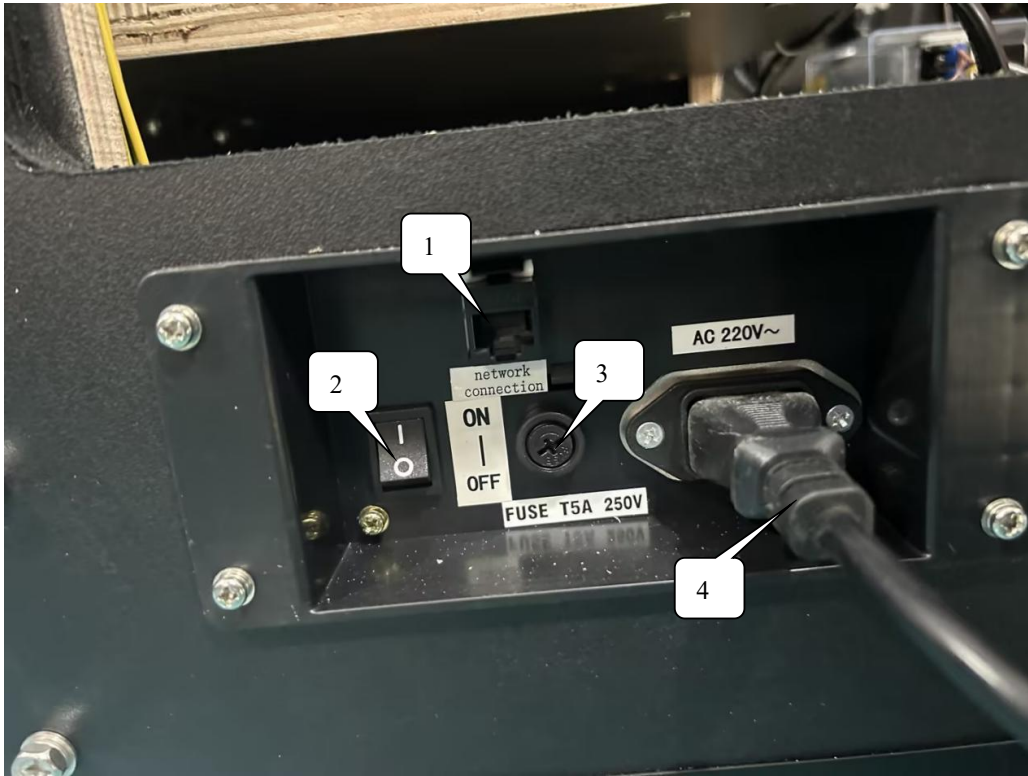
No.	Part No.	Code No.	Name	Version	Qty
1	M164-1731-00	2.23.06000022	Coin mechanism	1.1	1



No.	Part No.	Code No.	Name	Version	Qty
1	M164-1707-00	2.30.00000005	Counter	1.1	2
2	M164-1745-00	2.24.02.010001	Red button	1.1	3



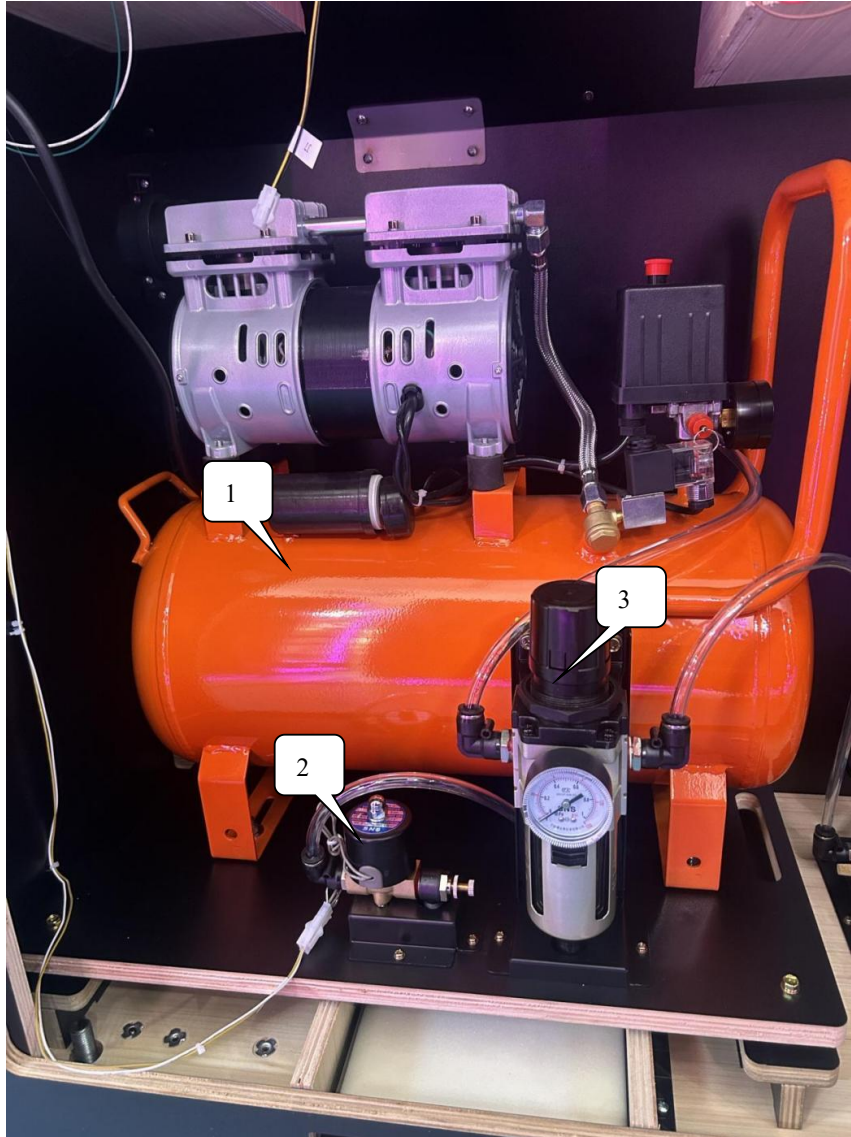
No.	Part No.	Code No.	Name	Version	Qty
1	M164-1702-00	2.27.02.050017	Fan	1.1	6
	M164-1703-00	2.27.02.000010	Fan net	1.1	3
2	M164-1710-00	2.33.07.060003	DP-DVI cable	1.1	1
3	M164-1739-00	2.33.01.010045	Power cord	1.1	1
4	M164-1721-00	2.12.01055010	55" monitor	1.1	1



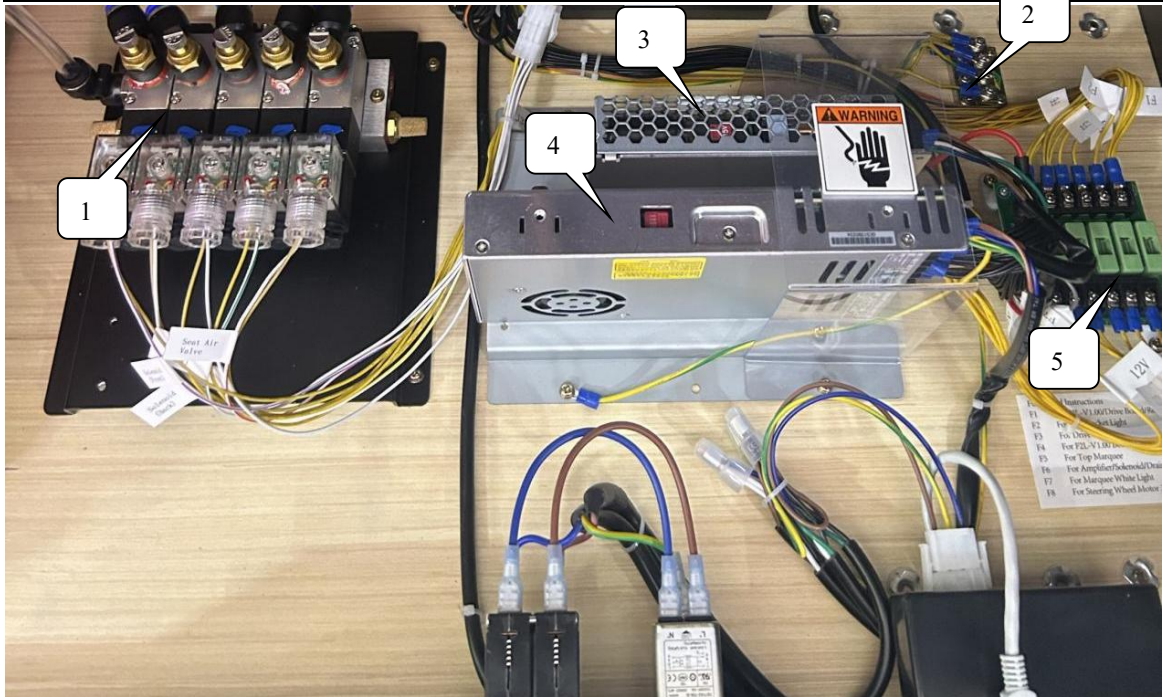
No.	Part No.	Code No.	Name	Version	Qty
1	M164-1712-00	2.33.02.000001	Network port	1.1	1
2	M164-1706-00	2.26.01.000005	Rocket sw	1.1	1
3	M164-1705-00	2.19.02.000006	Fuse holder	1.1	1
4	M164-1905-00	2.33.01.018024	Power cord	1.1	1



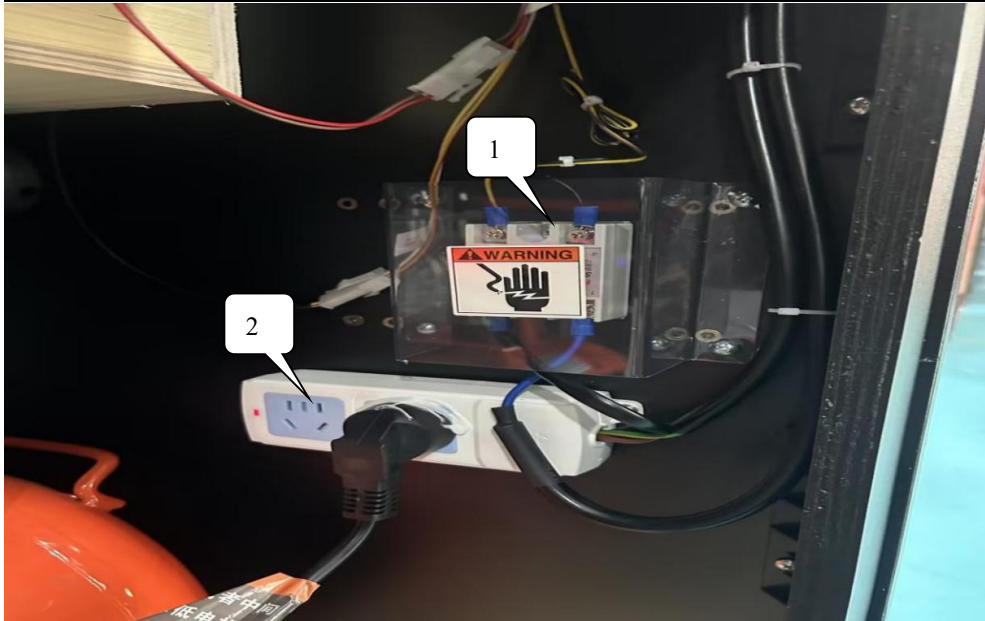
No.	Part No.	Code No.	Name	Version	Qty
1	M164-1715-00	2.26.02.000091	Breaker	1.1	1
2	M164-1704-00	2.32.01000004	Filter	1.1	1



No.	Part No.	Code No.	Name	Version	Qty
1	M164-0302-00	4.06.11.01.0211	Air compressor (110V)	1.2	1
	M164-0303-00	4.06.11.01.0203	Air compressor (220V)	1.2	1
2	M164-0306-00	2.51.01.12.3010	Liquid control valve	1.2	1
3	M164-0307-00	2.51.01.12.3008	Speed adjust valve	1.1	1



No.	Part No.	Code No.	Name	Version	Qty
1	M164-0312-00	2.51.01.12.0040	Solenoid	1.1	5
2	M164-1743-00	2.19.02.030019	8 bit GND bar	1.1	1
3	M164-1759-00	2.16.02.000121	Power supply(24V)	1.1	1
4	M164-1760-00	2.16.02.000117	Power supply(12V)	1.1	1
5	M164-1701-00	2.17.14.000243A	Fuse board	1.1	1



No.	Part No.	Code No.	Name	Version	Qty
1	M164-1744-00	2.21.4.0000043	Relay	1.1	1
2	M164-1736-00	2.16.06.000112	110V base box	1.1	1
	M164-1737-00	2.16.06.000111	110V power socket	1.1	1
	M164-1738-00	2.16.06.040021	220V socket	1.1	1

www.unistechology.com

10. AIR COMPRESSOR INSTRUCTION(For 110V)

10.1.Introduction

10.1.1 Foreword:

First of all, thank you for choosing our company's oil-free air compressor, which is meticulously designed using the latest international technology. Our products undergo rigorous inspection and testing before leaving the factory. However, to ensure safe and reliable operation and to guarantee a long service life, we kindly ask you to take some time to carefully read this manual before use in order to operate and maintain the machine correctly. If there are any uncertainties, please contact our company or a nearby distributor for satisfactory service. We hope that our product will make a smooth contribution to your work and life.

10.1.2 Service Content:

Our products are only intended for use by users who follow the installation and operation instructions in this manual. Within the warranty period, if the parts of our product are defective or damaged, our company will replace them free of charge or at a charge. Our technical department is the only authorized entity to confirm whether damage is covered by the quality assurance scope. This quality assurance does not cover direct or indirect human or material loss or damage caused by improper operation and maintenance of the machine. It is limited to damage to materials and parts (excluding normal wear and tear of all parts).

10.1.3 Receipt of Goods:

When you receive the air compressor, please first check whether the model and specifications match your order.

Check if there is any damage to the machine and accessories during transport. If there are any shortages or damage, please contact us for a prompt resolution.

10.2. Product Introduction

Our company's oil-free air compressor (referred to as "the air compressor") is widely used in fields such as dentistry, farming, food, pharmaceuticals, fitness, beauty, chemicals, scientific experiments, and can also be used as a vacuum pump, due to its ability to provide a clean, environmentally friendly air source free of oil contamination. Its main advantages are as follows:

The motor adopts an advanced design system for optimization, ensuring the compressor achieves high power, efficiency, low energy consumption, high performance, and high reliability.

The piston ring uses a new environmentally friendly material with a low friction coefficient, capable of self-lubrication. This replaces the traditional oil-lubricated piston machines, and more importantly, it does not produce harmful substances containing any oil, preventing secondary contamination of the air source.

The cylinder sleeve adopts an advanced surface hardening process, greatly reducing

thickness and accelerating heat transfer. This effectively improves surface density and wear resistance, reducing friction coefficient, thereby extending service life and reducing maintenance time and costs.

The intake and exhaust valve plates are made from Swedish valve steel that undergoes over 80 hours of precision grinding, combined with a reasonable silencing design, greatly improving volumetric efficiency and significantly reducing noise compared to other similar products.

Multiple pressure and overload protection ensure smooth and reliable operation of the machine.

The overall design of the machine is thoughtful, flexible to move, easy to operate, and convenient to maintain.

10.3. Main Technical Parameters

Type: Piston Type

Compressed Medium: Air

Suction Pressure: Atmospheric Pressure

Cooling Method: Air Cooling

Rated Discharge Volume: 120L/min

Rated Discharge Pressure: 0.8MPa

Rated Power: 600W

Power Supply/Frequency: 110V/60Hz

Motor Speed: 1480r/min

Motor Temperature Protector Cutoff Temperature: 135° C

Noise: ≤70dB(A)

Startup Method: Direct Start

Discharge Volume Control: Discharge volume adjustable manually in the range of 100%-0

Air Tank Volume: 30L

Motor Insulation Class: B

Safety Valve Opening Pressure: 0.88MPa

10.4. Air Compressor Operation

4.1 Place the switch button in the ON or Auto position, connect the power, and the machine will start. If the machine does not start, lower the air pressure in the air tank to below 0.4MPa before starting.

4.2 Place the switch button in the OFF position to cut off the power, and the machine will stop running.

4.3 The switch is equipped with a safety valve. When the pressure in the air tank exceeds 0.88MPa, the safety valve will make a sound and release the pressure. If the safety valve sounds, please inspect the air pressure switch and ensure that the working pressure of the air pressure switch does not exceed the rated working pressure.

4.4 After daily shutdown, gently press the pin below the oil-water separator to drain the water from the oil-water separator. (Some users may not install the oil-water separator, in which case this step is not needed.)

4.5 The pressure of the gas discharged from the exhaust valve can be adjusted using the pressure regulating knob on the oil-water separator. Turning the knob clockwise increases the discharge pressure, which can reach the maximum pressure of the air tank. Turning the knob counterclockwise decreases the discharge pressure, and at the minimum setting, the gas source can be completely shut off. Note: When the knob reaches its limit position, do not continue to forcefully rotate it to avoid causing damage.

4.6 When adjusting the air pressure switch working pressure, remove the cover of the air pressure switch, and adjust the rotary screw inside the pressure switch. Turn clockwise to increase the pressure, and counter-clockwise to decrease the pressure. Make sure to disconnect the power before adjusting.

10.5. Usage Requirements

5.1 Before use, please read this manual.

5.2 The air compressor should be stored in a dry, well-ventilated indoor space, strictly avoiding proximity to perishable, decaying, flammable, and chemical substances. The storage period should not exceed two years from the date of manufacture. If the storage period exceeds this, the machine should be inspected and maintained, and necessary tests should be performed.

5.3 The machine should not be subjected to impact. When in use, ensure it is placed upright. During transportation, avoid tilting or inverting the machine to prevent malfunction.

5.4 To ensure safety and prolong the machine's service life, it should be placed in a location with good airflow, cleanliness, and coolness. Avoid using it in environments with high temperatures, polluted air, excessive dust, or exhaust fumes from oil-based fuels.

5.5 Before connecting to the power supply, ensure the machine is in the OFF position. Once the power is connected, turn on the switch to begin operation. The power supply voltage should not be more than 10% higher or lower than the rated working voltage.

5.6 The air compressor should be protected from water exposure and not placed in damp, cold environments to prevent malfunction.

5.7 During operation, avoid touching high-temperature components, such as the cylinder head, exhaust pipes, and check valves, to prevent burns.

5.8 When the power is $\leq 750W$, the cross-sectional area of the power cable should be no less than $1mm^2$. When the power is $>750W$, the cross-sectional area should be no less than $2mm^2$, and the cable should not be excessively long.

10.6. Maintenance

Before performing any maintenance, ensure that the power is disconnected and the air pressure is fully discharged to avoid danger.

6.1 Keep the machine clean and perform regular cleaning and maintenance.

6.2 Drain the water from the air tank at least once a week. The air tank pressure should be below 0.1MPa when draining.

6.3 Regularly check the safety valve for responsiveness. The valve should be able to easily release air, and pressing the valve stem should cause it to return immediately.

6.4 After every 500 hours of use, remove and clean or replace the air filter element, and clean the air valve. After 5000 hours of use, replace the piston seals.

6.5 The air tank should undergo a pressure test every two years, and the inner and outer surfaces should be inspected annually. If there is serious rust, damage, or the pressure test fails, the air tank should be scrapped.

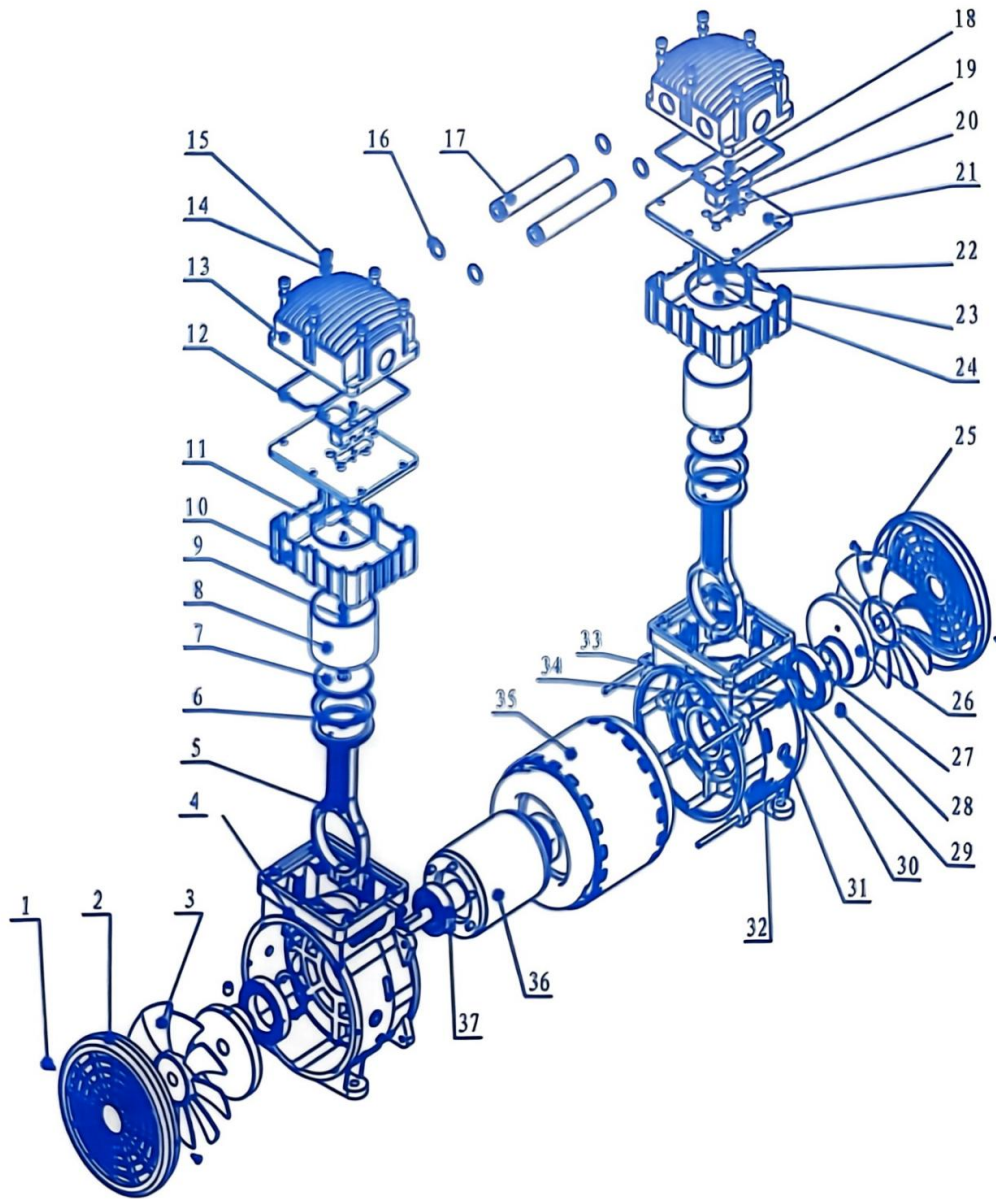
7. Troubleshooting

Warning: Before any maintenance or repair work, the power supply must be cut off, and the air pressure in the air tank must be completely released, otherwise, it may lead to potential danger!

Fault Phenomenon	Possible Cause	Solution
Motor does not rotate and there is no sound	<ol style="list-style-type: none"> 1 No power supply 2 The pressure switch is disconnected 3 Fuse blown 4 Overload protector in protection state 5 Pressure switch damaged 6 Motor stator winding burned out 	<ol style="list-style-type: none"> 1 Check the plug and switch 2 Reset the switch and check the cause 3 Replace the fuse 4 Wait for the motor to cool down and it will restart 5 Contact a reliable service center 6 Replace the stator
The motor has a current sound but cannot operate or runs very slowly	<ol style="list-style-type: none"> 1 Voltage too low 2 Motor coil short-circuited or open circuit 3 One-way valve or pressure switch damaged 	<ol style="list-style-type: none"> 1 Check the voltage, ensure it is no less than 10% of the rated voltage 2 Contact a reliable service center
The overload protector repeatedly cuts off the power supply	<ol style="list-style-type: none"> 1 Voltage too low 2 Poor ventilation, high temperature 	<ol style="list-style-type: none"> 1 Check the voltage, ensure it is no less than 10% of the rated voltage 2 Place the air compressor in a well-ventilated area
The air compressor's pressure drops when turned off	<ol style="list-style-type: none"> 1 Loose air connections, leakage 2 Drain valve open 3 One-way valve leaking 	<ol style="list-style-type: none"> 1 Check and eliminate 2 Tighten the drain valve 3 Remove, clean, and reassemble; replace if necessary

Fault Phenomenon	Possible Cause	Solution
The discharged gas contains a large amount of moisture	<ol style="list-style-type: none"> 1 There is a large amount of water in the air tank 2 The temperature is too high 	<ol style="list-style-type: none"> 1 Drain the water from the air tank 2 Move the air compressor to a cooler location, or use an oil-water separator
The air compressor runs continuously	<ol style="list-style-type: none"> 1 Pressure switch damaged 2 Leakage 	<ol style="list-style-type: none"> 1 Replace the pressure switch 2 Check and eliminate
The air compressor vibrates	<ol style="list-style-type: none"> 1 Loose fasteners 2 Support foot pads damaged or missing 	<ol style="list-style-type: none"> 1 Check and eliminate 2 Replace the foot pads
The pressure cannot rise or does not reach the specified pressure	<ol style="list-style-type: none"> 1 Drain valve open 2 Air filter clogged 3 Leakage 4 Valve plate malfunctioning or obstructed, or leaking 5 Piston ring excessively worn 	<ol style="list-style-type: none"> 1 Tighten the drain valve 2 Clean or replace the filter element 3 Check and eliminate leaks 4 Clean or replace the valve plate 5 Replace with new parts

10.8 Main Unit Disassembly Diagram and Part Names

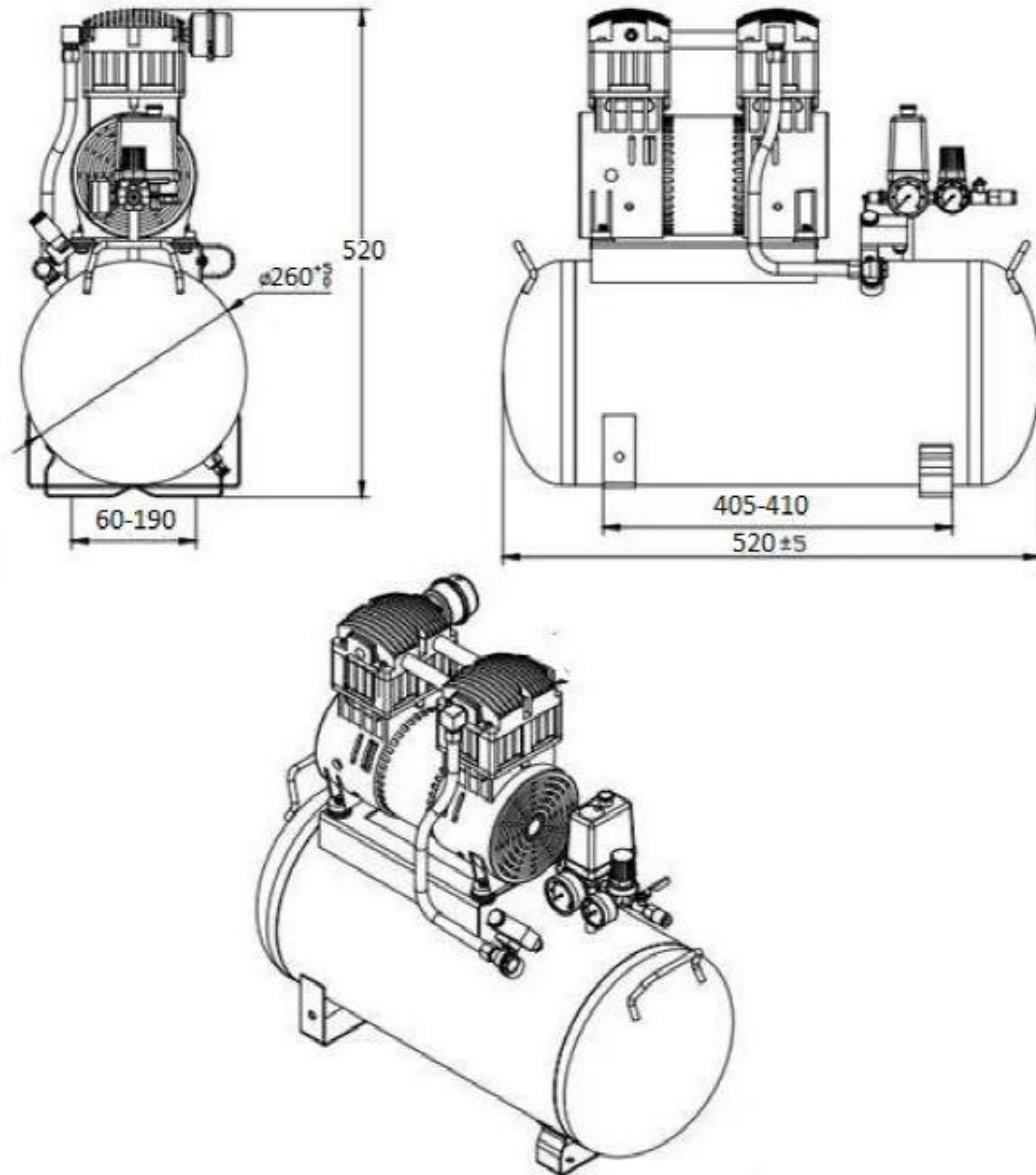


Serial No.	Name	Quantity	Material	Serial No.	Name	Quantity	Material
1	Self-tapping screw	4	ST2.9*8	20	Exhaust valve plate	2	Quenched and tempered steel strip
2	Fan cover	2	Reinforced Nylon 1010	21	Valve plate	2	Die-cast aluminum alloy YL102
3	Left fan	1	Reinforced Nylon 1010	22	Intake valve plate	2	Quenched and tempered steel strip

Serial No.	Name	Quantity	Material	Serial No.	Name	Quantity	Material
4	Left casing	1	Die-cast aluminum alloy YL104	23	Metal gasket	2	Aluminum and aluminum alloy extrusion rod LY 12
5	Connecting rod	2	Die-cast aluminum alloy YL104	24	Cross-recessed pan head screw	2	1Cr13Ni9
6	Piston cup	2	Polyphenylene sulfide (PPS) filled with PTFE	25	Right fan	1	Reinforced Nylon 1010
7	Pressure plate	2	Die-cast aluminum alloy YL102	26	Crank	2	Gray cast iron HT20-40
8	Cylinder 6 A02T4	2	Thin-walled aluminum and aluminum alloy tube	27	Bearing 6908-2Z	2	
9	Cross-recessed countersunk screw	2	Cold-die forging rock-like steel	28	Hexagon socket flat-end screw	4	
10	Adjustment bracket	2	Die-cast aluminum alloy YL104	29	Elastic retaining ring for shaft	2	
11	Cylinder sealing ring	2	Silicone rubber	30	Hexagon socket cylindrical head screw	2	
12	Cylinder head sealing ring	2	Silicone rubber	31	Right casing	1	Die-cast aluminum alloy YL104
13	Cylinder head	2	Die-cast aluminum alloy YL102	32	Lead protection ring	1	
14	Light-duty spring washer	12		33	Lead protection ring	4	Carbon structural steel for cold die forging
15	Hexagon socket cylindrical head screw	12		34	Lead protection ring	4	
16	Connection pipe sealing ring	4	Silicone rubber	35	Stator	1	

11. AIR COMPRESSOR INSTRUCTION(For 220V)

11.1.Product Structure Diagram



11.2 Product Technical Standards

1. Compliance Standards:

Compressor Performance Testing Standard
Operation Vibration Testing Standard
Operation Noise Testing Standard

2. Equipment Operating Environment:

Altitude: $\leq +1000\text{M}$
Humidity: 90% (+25° C)
Temperature: -20° C to 45° C

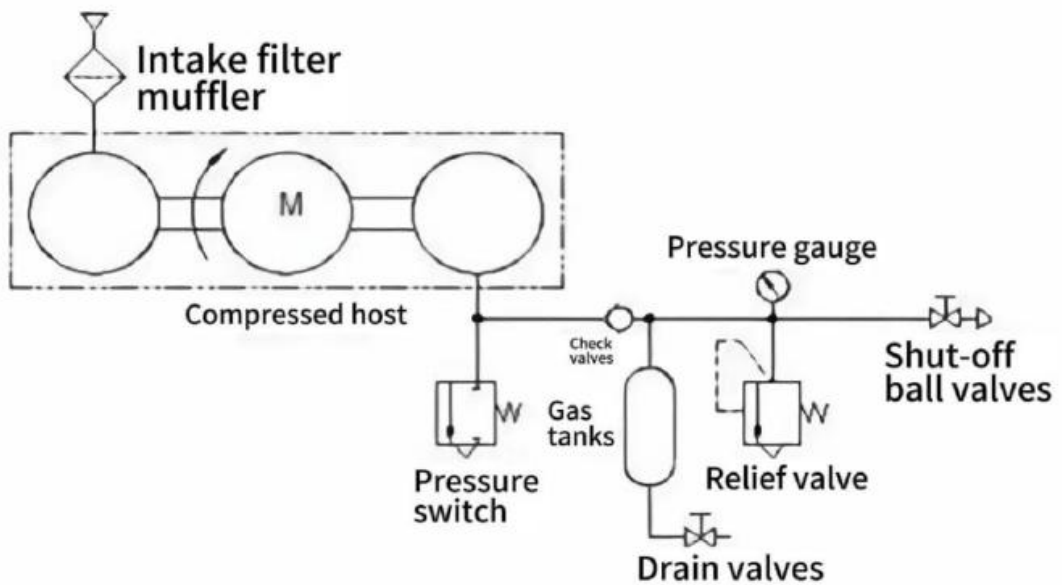
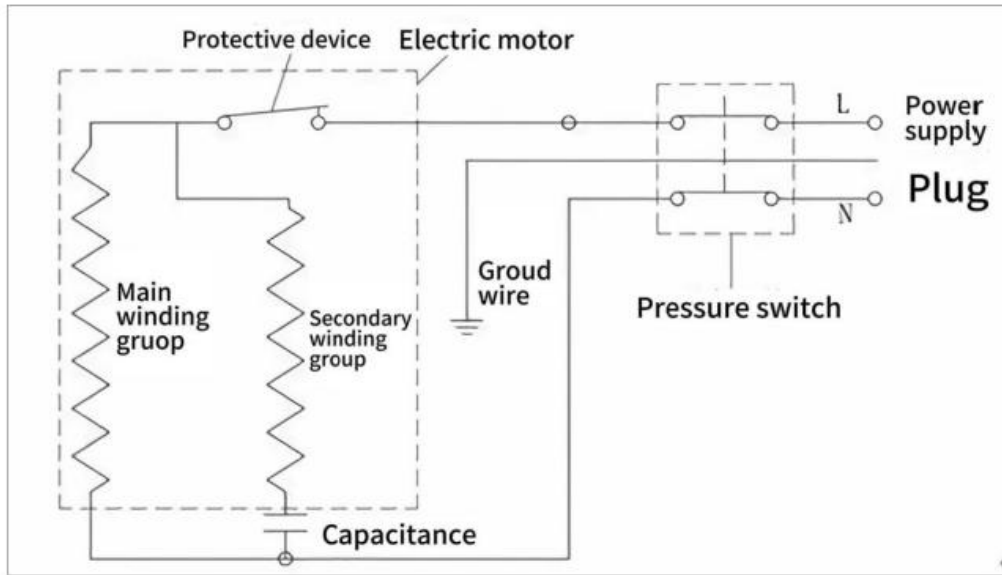
3. Main Technical Parameters:

Type: Piston Type
Compressed Medium: Air
Inlet Pressure: Atmospheric Pressure
Cooling Method: Air Cooling
Rated Air Delivery: 120L/min
Rated Discharge Pressure: 0.8MPa
Rated Power: 600W
Power Supply/Frequency: 220V/50Hz
Motor Speed: 1480r/min

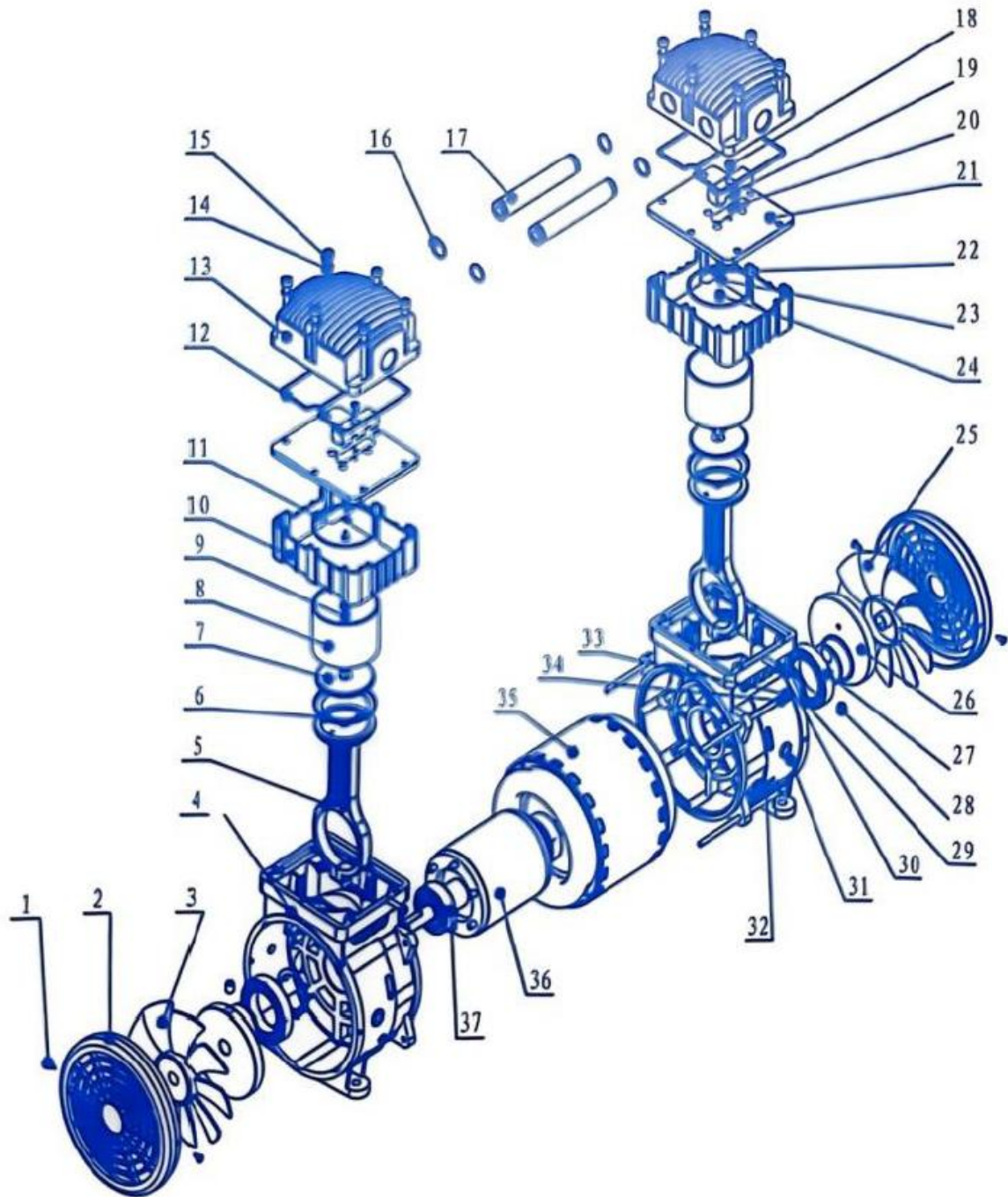
Motor Temperature Protector Disconnecting Temperature: 135°C 3.11 Noise: $\leq 80\text{dB(A)}$

Startup Mode: Direct Start
Air Delivery Control: Air delivery can be manually adjusted within the 100%-0% range
Air Tank Capacity: 30L
Motor Insulation Grade: B
Safety Valve Opening Pressure: 0.88MPa

11.3. Wiring Diagram



11.4 Main Unit Disassembly Diagram and Part Names



Monster Kart DLX Twin GMP Manual

Serial No.	Name	Quantity	Material	Serial No.	Name	Quantity	Material
1	Self-tapping screw	4	ST2.9*8	20	Exhaust valve plate	2	Quenched and tempered steel strip
2	Fan cover	2	Reinforced Nylon 1010	21	Valve plate	2	Die-cast aluminum alloy YL102
3	Left fan	1	Reinforced Nylon 1010	22	Intake valve plate	2	Quenched and tempered steel strip
4	Left casing	1	Die-cast aluminum alloy YL104	23	Metal gasket	2	Aluminum and aluminum alloy extrusion rod LY12
5	Connecting rod	2	Die-cast aluminum alloy YL104	24	Cross-recessed pan head screw	2	1Cr13Ni9
6	Piston cup	2	Polyphenylene sulfide (PPS) filled with PTFE	25	Right fan	1	Reinforced Nylon 1010
7	Pressure plate	2	Die-cast aluminum alloy YL102	26	Crank	2	Gray cast iron HT20-40
8	Cylinder 6A02T4	2	Thin-walled aluminum and aluminum alloy tube	27	Bearing 6908-2Z	2	
9	Cross-recessed countersunk screw	2	Cold-die forging rock-like steel	28	Hexagon socket flat-end screw	4	
10	Adjustment bracket	2	Die-cast aluminum alloy YL104	29	Elastic retaining ring for shaft	2	
11	Cylinder sealing ring	2	Silicone rubber	30	Hexagon socket cylindrical head screw	2	
12	Cylinder head sealing ring	2	Silicone rubber	31	Right casing	1	Die-cast aluminum alloy YL104
13	Cylinder head	2	Die-cast aluminum alloy YL102	32	Lead protection ring	1	
14	Light-duty spring washer	12		33	Lead protection ring	4	Carbon structural steel for cold die forging
15	Hexagon socket cylindrical head screw	12		34	Lead protection ring	4	
16	Connection pipe sealing ring	4	Silicone rubber	35	Stator	1	
17	Connection pipe	2	Aluminum and aluminum alloy extrusion rod LY12	36	Rotor	1	
18	Cross-recessed pan head screw	2	1Cr13Ni9	37	Bearing 6204-2	2	
19	Limit block	2	Die-cast aluminum alloy YL102				

11.5. Installation and Usage Guidelines

Ensure correct wiring connections.

Avoid prolonged overload, low-speed operation, or stalling of the motor to prevent excessive temperature rise or damage.

Do not disassemble the pre-assembled gearbox reducer carelessly to avoid dust ingress or improper gear engagement, which could cause noise.

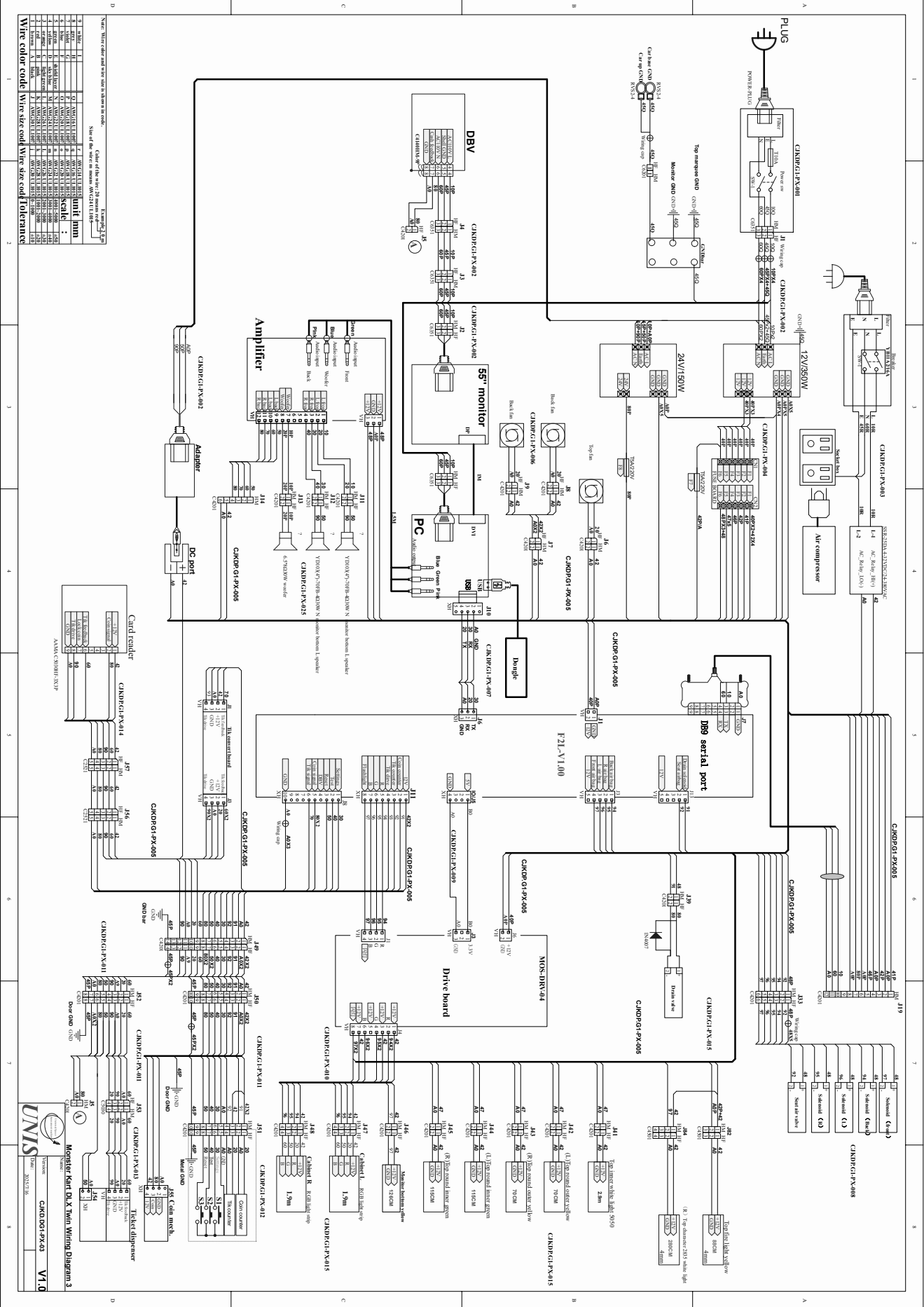
Motor installation and maintenance should be performed by qualified professionals with relevant electrical technology credentials.

When connecting the motor and gearbox shaft to the load, avoid using excessive force or impact to prevent internal deformation or misalignment, which could lead to severe noise or seizing.

Prevent collisions, drops, or impacts during transportation.

11.6. Warranty Requirements

The product should operate normally for up to one year from the date of purchase, provided it is used and stored according to the maintenance and usage instructions. If the product experiences damage or fails to function properly within this period due to manufacturing defects, the company will repair or replace the defective product free of charge.



NOTE: Wire color and size are shown in letters in code.

Wire Size	Color of the wire	Code
18	White	W
18	Black	B
18	Red	R
18	Blue	BL
18	Green	GR
18	Yellow	Y
18	Purple	P
18	Brown	BR
18	Pink	PK
18	Grey	GRY
18	Orange	O
18	Light Blue	LB
18	Light Green	LG
18	Light Yellow	LY
18	Light Purple	LP
18	Light Brown	LBW
18	Light Pink	LPK
18	Light Grey	LGRY
18	Light Orange	LO
18	Light Light Blue	LLB
18	Light Light Green	LLG
18	Light Light Yellow	LLY
18	Light Light Purple	LLP
18	Light Light Brown	LLBW
18	Light Light Pink	LLPK
18	Light Light Grey	LLGRY
18	Light Light Orange	LLO
18	Light Light Light Blue	LLLBB
18	Light Light Light Green	LLLGG
18	Light Light Light Yellow	LLLYY
18	Light Light Light Purple	LLLP
18	Light Light Light Brown	LLLBW
18	Light Light Light Pink	LLLPK
18	Light Light Light Grey	LLLGRY
18	Light Light Light Orange	LLLO

Scale: 1mm

Wire color code	Wire size code	Wire size code	Tolerance
W	18	18	±0.1
B	18	18	±0.1
R	18	18	±0.1
BL	18	18	±0.1
GR	18	18	±0.1
Y	18	18	±0.1
P	18	18	±0.1
BR	18	18	±0.1
PK	18	18	±0.1
GRY	18	18	±0.1
O	18	18	±0.1
LB	18	18	±0.1
LG	18	18	±0.1
LY	18	18	±0.1
LP	18	18	±0.1
LBW	18	18	±0.1
LPK	18	18	±0.1
LGRY	18	18	±0.1
LO	18	18	±0.1
LLB	18	18	±0.1
LLG	18	18	±0.1
LLY	18	18	±0.1
LLP	18	18	±0.1
LLBW	18	18	±0.1
LLPK	18	18	±0.1
LLGRY	18	18	±0.1
LLLO	18	18	±0.1

Card reader
CANDOG1-PX-414

Card reader
CANDOG1-PX-408

Card reader
CANDOG1-PX-405

Card reader
CANDOG1-PX-406

Card reader
CANDOG1-PX-407

Card reader
CANDOG1-PX-409

Card reader
CANDOG1-PX-410

Card reader
CANDOG1-PX-411

Card reader
CANDOG1-PX-412

Card reader
CANDOG1-PX-413

Card reader
CANDOG1-PX-415

Card reader
CANDOG1-PX-416

Card reader
CANDOG1-PX-417

Card reader
CANDOG1-PX-418

Card reader
CANDOG1-PX-419

Card reader
CANDOG1-PX-420

Card reader
CANDOG1-PX-421

Card reader
CANDOG1-PX-422

Card reader
CANDOG1-PX-423

Card reader
CANDOG1-PX-424

Card reader
CANDOG1-PX-425

Card reader
CANDOG1-PX-426

Card reader
CANDOG1-PX-427

Card reader
CANDOG1-PX-428

Card reader
CANDOG1-PX-429

Card reader
CANDOG1-PX-430

Card reader
CANDOG1-PX-431

Card reader
CANDOG1-PX-432

Card reader
CANDOG1-PX-433

Card reader
CANDOG1-PX-434

Card reader
CANDOG1-PX-435

Card reader
CANDOG1-PX-436

Card reader
CANDOG1-PX-437

Card reader
CANDOG1-PX-438

Card reader
CANDOG1-PX-439

Card reader
CANDOG1-PX-440

Card reader
CANDOG1-PX-441

Card reader
CANDOG1-PX-442

Card reader
CANDOG1-PX-443

Card reader
CANDOG1-PX-444

Card reader
CANDOG1-PX-445

Card reader
CANDOG1-PX-446

Card reader
CANDOG1-PX-447

Card reader
CANDOG1-PX-448

Card reader
CANDOG1-PX-449

Card reader
CANDOG1-PX-450

Card reader
CANDOG1-PX-451

Card reader
CANDOG1-PX-452

Card reader
CANDOG1-PX-453

Card reader
CANDOG1-PX-454

Card reader
CANDOG1-PX-455

Card reader
CANDOG1-PX-456

Card reader
CANDOG1-PX-457

Card reader
CANDOG1-PX-458

Card reader
CANDOG1-PX-459

Card reader
CANDOG1-PX-460

Card reader
CANDOG1-PX-461

Card reader
CANDOG1-PX-462

Card reader
CANDOG1-PX-463

Card reader
CANDOG1-PX-464

Card reader
CANDOG1-PX-465

Card reader
CANDOG1-PX-466

Card reader
CANDOG1-PX-467

Card reader
CANDOG1-PX-468

Card reader
CANDOG1-PX-469

Card reader
CANDOG1-PX-470

Card reader
CANDOG1-PX-471

Card reader
CANDOG1-PX-472

Card reader
CANDOG1-PX-473

Card reader
CANDOG1-PX-474

Card reader
CANDOG1-PX-475

Card reader
CANDOG1-PX-476

Card reader
CANDOG1-PX-477

Card reader
CANDOG1-PX-478

Card reader
CANDOG1-PX-479

Card reader
CANDOG1-PX-480

Card reader
CANDOG1-PX-481

Card reader
CANDOG1-PX-482

Card reader
CANDOG1-PX-483

Card reader
CANDOG1-PX-484

Card reader
CANDOG1-PX-485

Card reader
CANDOG1-PX-486

Card reader
CANDOG1-PX-487

Card reader
CANDOG1-PX-488

Card reader
CANDOG1-PX-489

Card reader
CANDOG1-PX-490

Card reader
CANDOG1-PX-491

Card reader
CANDOG1-PX-492

Card reader
CANDOG1-PX-493

Card reader
CANDOG1-PX-494

Card reader
CANDOG1-PX-495

Card reader
CANDOG1-PX-496

Card reader
CANDOG1-PX-497

Card reader
CANDOG1-PX-498

Card reader
CANDOG1-PX-499

Card reader
CANDOG1-PX-500

Card reader
CANDOG1-PX-402

Card reader
CANDOG1-PX-403

Card reader
CANDOG1-PX-404

Card reader
CANDOG1-PX-405

Card reader
CANDOG1-PX-406

Card reader
CANDOG1-PX-407

Card reader
CANDOG1-PX-408

Card reader
CANDOG1-PX-409

Card reader
CANDOG1-PX-410

Card reader
CANDOG1-PX-411

Card reader
CANDOG1-PX-412

Card reader
CANDOG1-PX-413

Card reader
CANDOG1-PX-414

Card reader
CANDOG1-PX-415

Card reader
CANDOG1-PX-416

Card reader
CANDOG1-PX-417

Card reader
CANDOG1-PX-418

Card reader
CANDOG1-PX-419

Card reader
CANDOG1-PX-420

Card reader
CANDOG1-PX-421

Card reader
CANDOG1-PX-422

Card reader
CANDOG1-PX-423

Card reader
CANDOG1-PX-424

Card reader
CANDOG1-PX-425

Card reader
CANDOG1-PX-426

Card reader
CANDOG1-PX-427

Card reader
CANDOG1-PX-428

Card reader
CANDOG1-PX-429

Card reader
CANDOG1-PX-430

Card reader
CANDOG1-PX-431

Card reader
CANDOG1-PX-432

Card reader
CANDOG1-PX-433

Card reader
CANDOG1-PX-434

Card reader
CANDOG1-PX-435

Card reader
CANDOG1-PX-436

Card reader
CANDOG1-PX-437

Card reader
CANDOG1-PX-438

Card reader
CANDOG1-PX-439

Card reader
CANDOG1-PX-440

Card reader
CANDOG1-PX-441

Card reader
CANDOG1-PX-442

Card reader
CANDOG1-PX-443

Card reader
CANDOG1-PX-444

Card reader
CANDOG1-PX-445

Card reader
CANDOG1-PX-446

Card reader
CANDOG1-PX-447

Card reader
CANDOG1-PX-448

Card reader
CANDOG1-PX-449

Card reader
CANDOG1-PX-450

Card reader
CANDOG1-PX-451

Card reader
CANDOG1-PX-452

Card reader
CANDOG1-PX-453

Card reader
CANDOG1-PX-454

Card reader
CANDOG1-PX-455

Card reader
CANDOG1-PX-456

Card reader
CANDOG1-PX-457

Card reader
CANDOG1-PX-458

Card reader
CANDOG1-PX-459

Card reader
CANDOG1-PX-460

Card reader
CANDOG1-PX-461

Card reader
CANDOG1-PX-462

Card reader
CANDOG1-PX-463

Card reader
CANDOG1-PX-464

Card reader
CANDOG1-PX-465

Card reader
CANDOG1-PX-466

Card reader
CANDOG1-PX-467

Card reader
CANDOG1-PX-468

Card reader
CANDOG1-PX-469

Card reader
CANDOG1-PX-470

Card reader
CANDOG1-PX-471

Card reader
CANDOG1-PX-472

Card reader
CANDOG1-PX-473

Card reader
CANDOG1-PX-474

Card reader
CANDOG1-PX-475

Card reader
CANDOG1-PX-476

Card reader
CANDOG1-PX-477

Card reader
CANDOG1-PX-478

Card reader
CANDOG1-PX-479

Card reader
CANDOG1-PX-480

Card reader
CANDOG1-PX-481

Card reader
CANDOG1-PX-482

Card reader
CANDOG1-PX-483

Card reader
CANDOG1-PX-484

Card reader
CANDOG1-PX-485

Card reader
CANDOG1-PX-486

Card reader
CANDOG1-PX-487

Card reader
CANDOG1-PX-488

Card reader
CANDOG1-PX-48