



Capto Crane Claw replacement guide



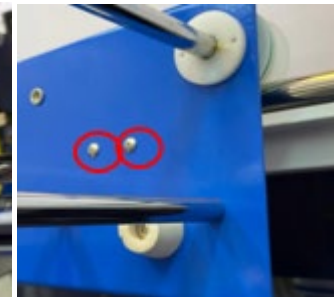
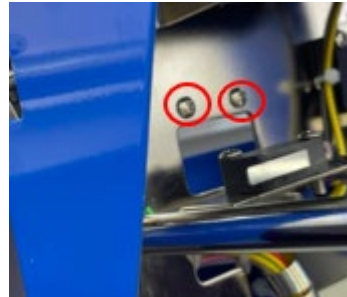
Use this guide to assist in replacement of the claw solenoid, string, or complete grab mechanism

- Open the game and remove the two rail brackets from the left and right sides of the gantry



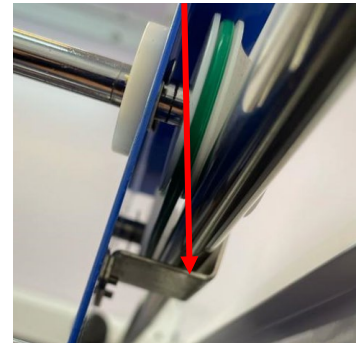
Left side screws

Right side screws



Left Bracket

Right Bracket



- Lay on bench and remove the 5 screws from around the head of the wagon cover.

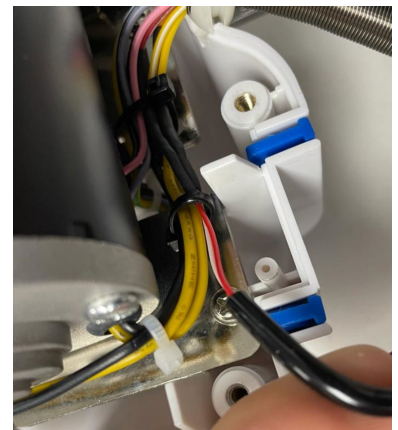




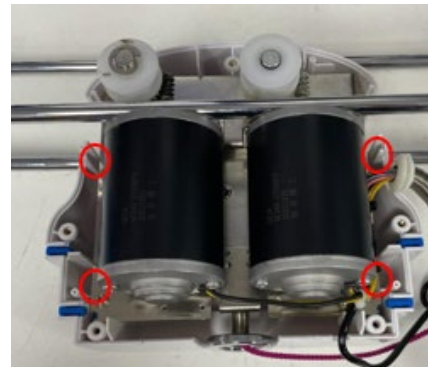
- Carefully pull the wire harness sheath away as you lift the main cover off.
- Remove the front plastic



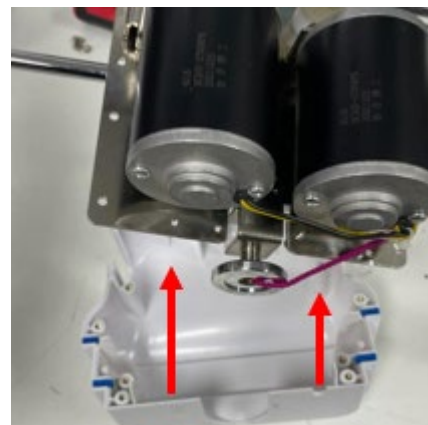
NOTE: If replacing the solenoid, you need to cut the cable ties, remove the heat-shrink tube and connect the new solenoid. Be sure to secure all wires again after doing this so the wires do not become trapped. If replacing only the claw or string, skip this step.



- Remove the 4 screws around the edge of the steel motor mounting plate



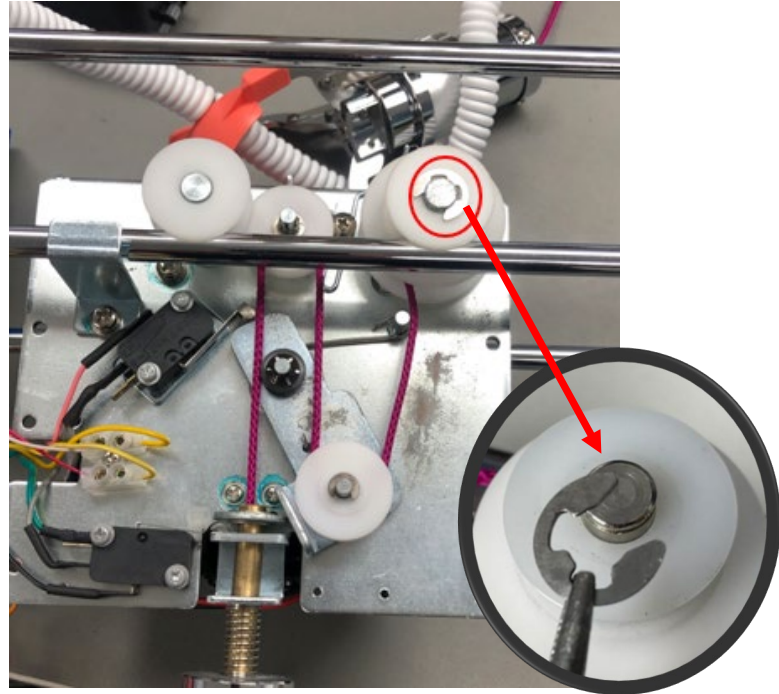
- Lift out the motor assembly plate from the back plastic cover



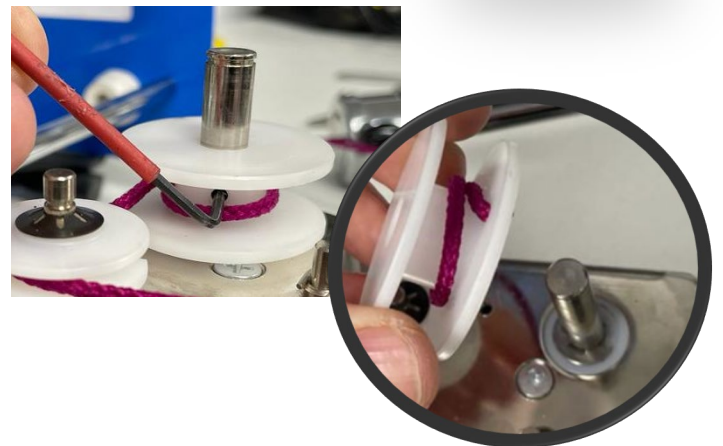


- Turn the mechanism over and remove the C-Clip from the top pulley

Note: this can be done with a pair of pliers



- Loosen the 2mm hex screw on the lower pulley and lift up the pulley.

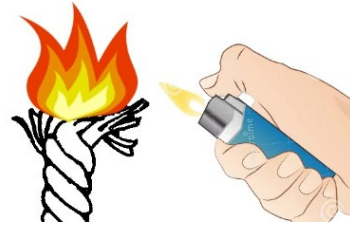




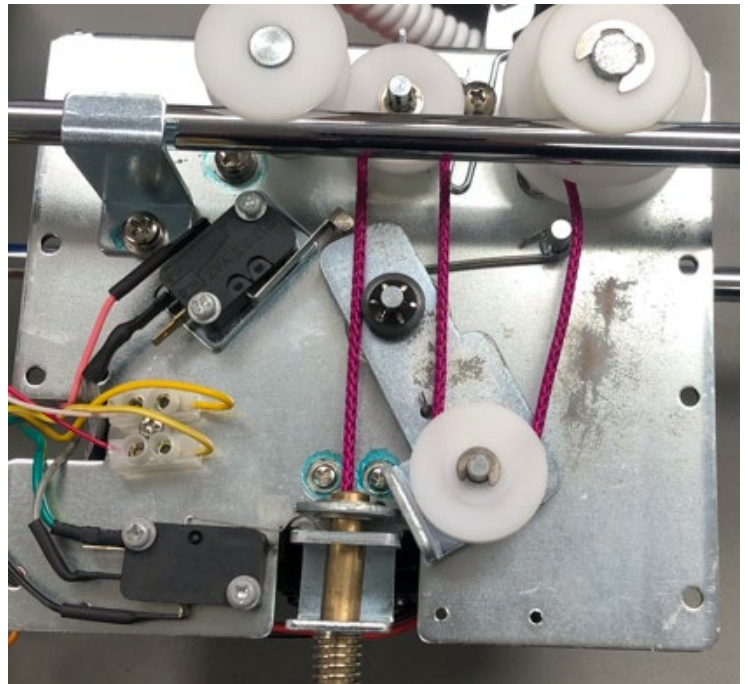
- Cut the string and install new string.



- Note: You can burn the end of the string after fitting to give a strong bond.



- Reassemble the crane in reverse order ensuring that the string is wound correctly.



End