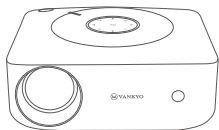


## LEISURE E30T USER MANUAL

Please read this manual throughly before using and keep it for future reference.

## WHAT'S INCLUDED



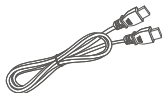
Projector



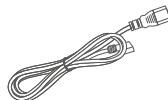
Remote (Batteries Not Included)



User Manual



HD Cable

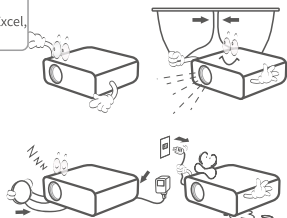


Power Cable

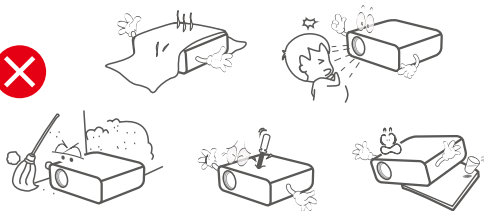
## NOTICE

### Recommended

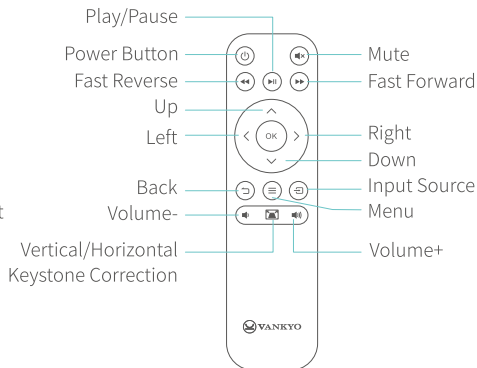
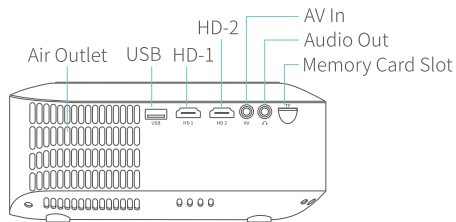
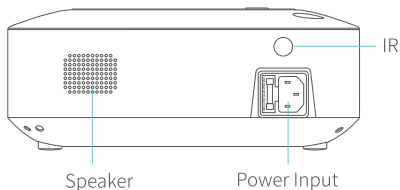
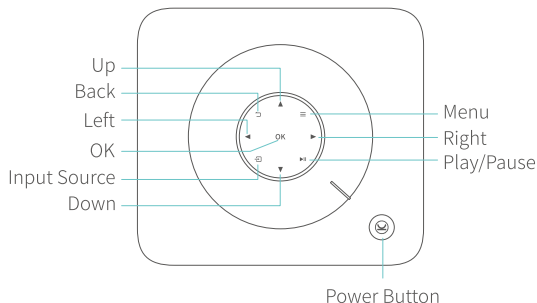
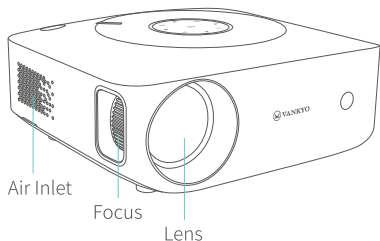
Video, Movie,  
PowerPoint, Excel,  
Word



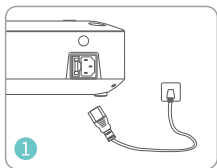
### NOT Recommended



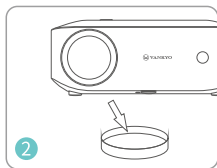
# PRODUCT OVERVIEW



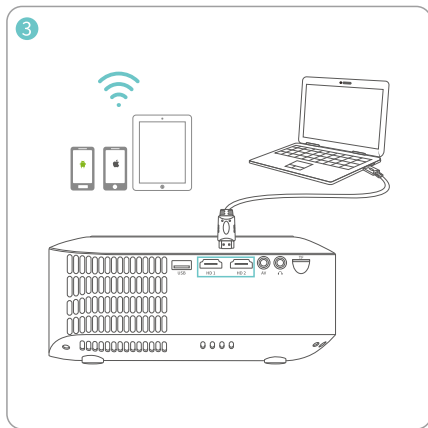
## QUICK START



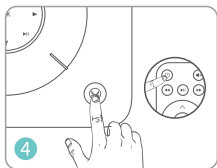
Plug the power cord into an outlet.



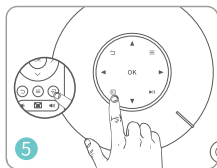
Take off the lens cover.



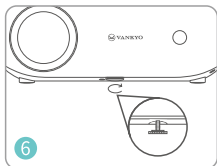
Connect your device to the projector correctly.



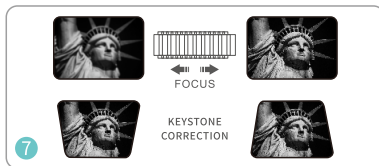
Press the **Power Button** to turn on the projector.



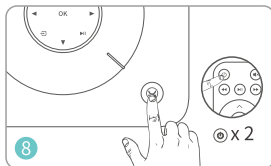
Select the correct input source to project your device.



Adjust the kickstand accordingly.



Adjust the focus ring on the projector and correct keystone distortion in **Projection Image Settings** to get the best image performance.




Press the **Power Button** twice to turn off the projector.

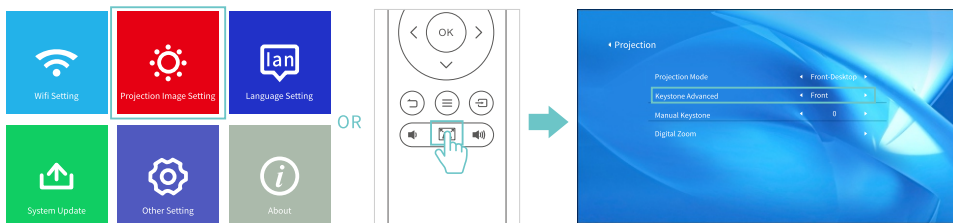
# HOMEPAGE



## KEYSTONE CORRECTION

### Step 1:

Select  on the **Homepage** to enter the interface of **Settings**, then select **Projection Images Setting** to enter the interface of **Projection**. Or, press  on the remote to directly enter the interface of **Projection**.

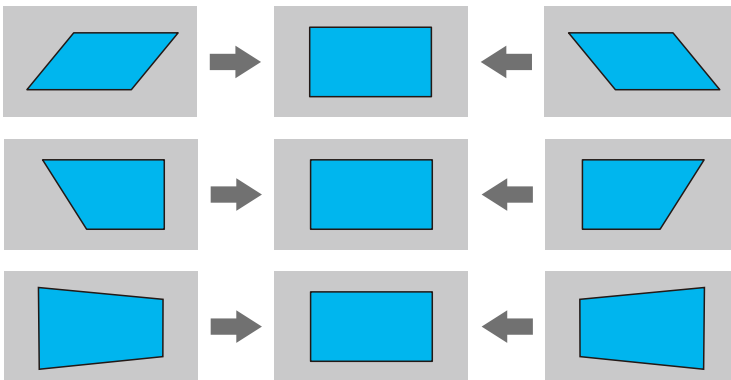


**Step 2:**

- \* Select **Front** in the option of **Keystone Advanced** and the **Manual Keystone** option will be displayed. You can correct the **Vertical** keystone distortion manually until the shape is evenly rectangular.



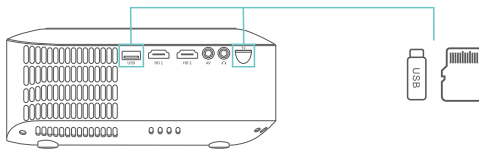
- \* Select **Side** in the option of **Keystone Advanced** and the **4-Point Keystone** option will be displayed. You can correct the image shape by **four corners**.



# MULTIMEDIA CONNECTION

## USB Disk/Memory Card Connection

**Step 1:** Turn on the projector and insert your USB disk/memory card into the USB port/memory card slot.



**Step 2:** Go to **Homepage** and select the file category you would like to display among **Movie**, **Music**, **Photo** and **Office Suite**, then enter the inserted USB disk/memory card to check all files stored.

### \* Video files

- 1 Select **Movie** to correspondingly read video files stored.
- 2 Tap **OK** on the projector/Press **OK** on the remote for a certain video file to enter full-screen display.
- 3 Tap **OK**/**≡** on the projector or press **OK**/**≡** on the remote when playing a video to bring up the toolbar to control the video playing.

**Video Format Supported:** AVI/MP4/MKV/FLV/MOV/RMVB/3G2/MPG/VOB/SWF/MPG/H.264/TS/WMV

### \* Audio files

- 1 Select **Music** to correspondingly read audio files stored.
- 2 Tap **OK** on the projector/Press **OK** on the remote for a certain audio file to enter full-screen display, then press **▶** on the remote to start/pause playing.



**Audio Format Supported:** AAC/MP3/FLAC/OGG/APE/AMR/WAV/MP2

### \* Photo files

- ① Select **Photo** to correspondingly read photo files stored.
- ② Tap **OK** on the projector/Press **OK** on the remote for a certain photo file to enter full-screen display.

Image Format Supported: JPEG/BMP/PNG

### \* Document files

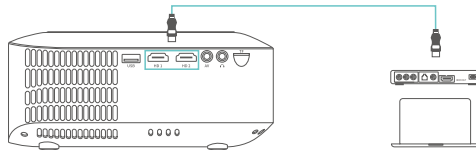
- ① Select **Office Suite** to correspondingly read document files stored.
- ② Tap **OK** on the projector/Press **OK** on the remote to view contents of a certain file.
- ③ Tap  on the projector or press  on the remote to jump the cursor to the toolbar at the top.

Text Format Supported: DOC/DOCX/XLS/XLSX/PPT/PPTX/TXT

Step 3: Tap  on the projector or press  on the remote to go back to **Homepage**.

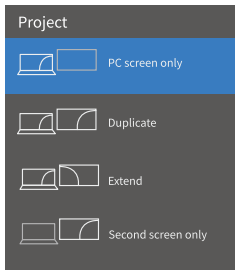
## HD Connection

Step 1: Turn on the projector and connect your device to the **HD 1/HD 2 Port** of the projector with the provided HD cable.



Step 2: Select **HD 1/HD 2** on the left side of the **Homepage** as the input source, then the contents of your device will be projected to the screen/wall.





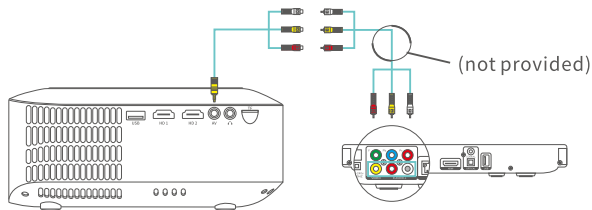
### Tip:

For Windows 7 or higher system, press the "Windows Logo + P" key combination to access four display modes.

- 1 **PC screen only** option displays contents on computer screen only.
- 2 **Duplicate** option displays the same contents on both computer screen and projected screen.
- 3 **Extend** option splits the display between the computer screen and the projected screen.
- 4 **Second screen only** option displays contents only on the projected screen.

## AV Connection


**Step 1:** Turn on the projector and connect your device to the AV Port of the projector with an AV cable.



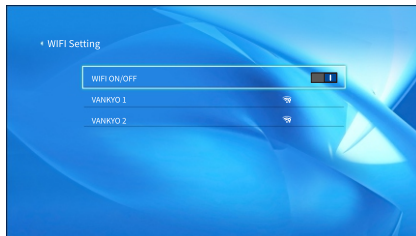
**Step 2:** Select **AV** on the left side of the **Homepage** as the input source, then the contents of your device will be projected to the screen/wall.

# SCREEN MIRRORING

## For iOS System

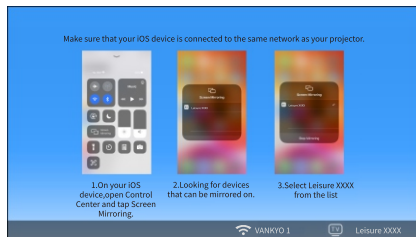
**Step 1:** Select  on the upper right corner of the **Homepage**, then enter **Settings** interface and select **Wifi Setting**.

**Step 2:** Turn on the WiFi switch of the projector and connect the projector to your router's WiFi.



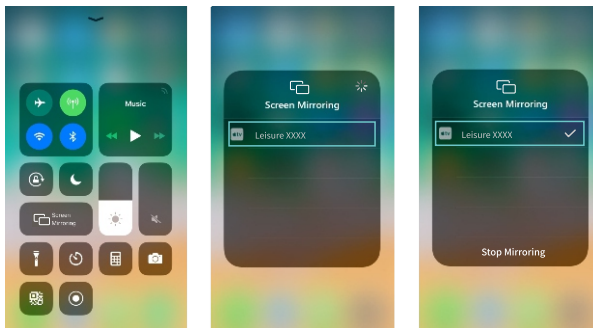
**Step 3:** Enter WiFi settings of your iOS device and connect it to the same router's WiFi.

**Step 4:** Go to **Homepage > iOS Cast** to enter the following interface.



**Step 5:** Activate Screen Mirroring/AirPlay Mirroring on your iOS device and search for the projector.

**Step 6:** Select Leisure XXXX from the searching list to connect.



**Step 7:** The contents on your iOS device will be mirrored to the wall/screen.

## For Android System

To activate this function, please make sure your Android device supports **Multi-screen/Wireless display**. Names may differ from one Android device to another.

**Step 1:** Turn **ON** the WiFi switch in your Android device.

### Note:

Successful WiFi connection is not a must, but please make sure the WiFi switch in your Android device is ON.

**Step 2:** Go to **Homepage > Miracast** to enter the following interface.



**Step 3:** Activate **Multi-Screen** function on your Android device and search for the projector.

**Step 4:** Select **Leisure XXXX** from the searching list to connect.

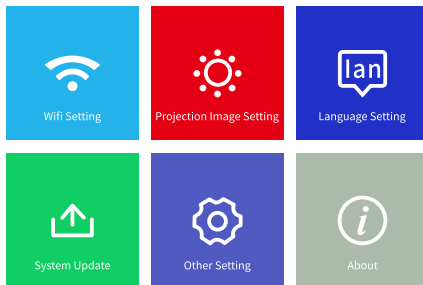
**Step 5:** The contents on your Android device will be mirrored to the wall/screen.

**Note:**

- 1 The fluency of screen mirroring will be affected by the network environment. A bandwidth of 100Mbit or more is recommended when using screen mirroring.
- 2 Make sure your mobile device is close to the projector when using wireless connection. A distance within 3ft is recommended.
- 3 Some mobile devices may not support screen mirroring due to the compatibility.

## SETTINGS

Select  on the upper right corner of the **Homepage** to enter **Settings** interface.



### Wifi Setting

Connect the projector to your router's WiFi

### Projection Image Setting

1. Change **Projection Mode** among **Front-Desktop**, **Rear-Desktop**, **Front-Ceiling** and **Rear Ceiling**.
2. Enter **Keystone Advanced(Front/Side)** to correct image distortion.
3. Enter **Digital Zoom** and use the **Up/Down** button to enlarge/reduce the image.

### Language Setting


Select a language for the projector.

### System Update

1. **Local Update:** Update the firmware version via a USB disk with upgrade file named as **RY-3H017.bin**. (Contact our customer service to get the upgrade file.)
2. **Online Update:** Update the firmware version online when a new version is available.
3. **Restore Factory:** Restore the projector to the factory settings.

## Other Setting

## 1. Power On Option

- \* If you select **Direct**, the projector will directly power on when you plug its power cord into an electrical outlet for the next use.
- \* If you select **Standby**, you need to press  to turn the projector on when you plug its power cord into an electrical outlet for the next use.

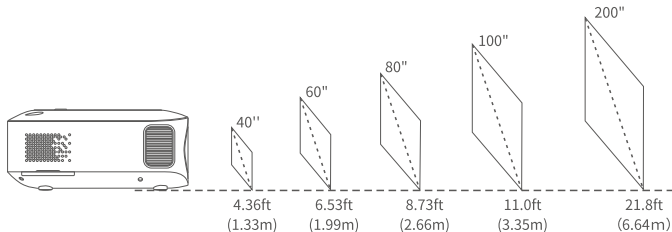
## 2. Scheduled Shutdown

Set the time duration for the projector to shut down automatically.  
Options include **Off, 10min, 20min, 30min, 60min** and **120min**.

## About

Check the **System Version** and **MAC Address** of the projector.

## PROJECTION DISTANCE&amp;SIZE



\* The recommended projection distance varies with different projection contents. Please adjust the distance between the wall/screen and the projector properly as needed.

\* Ambient darkness will improve the clarity of the projected images.

## SPECIFICATION

Display Technology	LCD	Light Source	LED
Resolution	Native 1920 x 1080	Input Signal	576i, 720P, 1080i, 1080P
Installation Type	Front/Rear/Ceiling	Aspect Ratio	4:3/16:9/Auto
Focus	Manual	Electronic Keystone	±50°
Speaker	3W/4ohm	Power Supply	AC 100-240V, 50/60Hz
Unit Dimension	240 x 210 x 90mm	Unit Net Weight	1.8kg
Photo Format Supported	JPG/E/BMP/PNG	Audio Format Supported	AAC/MP3/FLAC/OGG/APE/AMR/WAV/MP2
Mounting Screws	M4 Metric	Number of Screw	4
Video Format Supported	AVI/MP4/MKV/FLV/MOV/RMVB/3G2/MPG/VOB/SWF/MPG/H.264/TS/WMV		
Ports	HD In x 2 / USB x 1 / Audio Out x 1 / AV In x 1 / Memory Card Slot x 1		
Text Format Supported	DOC/DOCX/XLS/XLSX/PPT/PPTX/TXT		

# TROUBLESHOOTING GUIDE

## 1. The content from Hulu, Netflix, and similar services can not be mirrored or cast.

- \* Due to the copyright restriction from Hulu, Netflix, and similar services, the contents MAY NOT be mirrored or cast.

## 2. What should I do if I want to watch the content from Hulu, Netflix, and similar services via the projector?

- \* Please prepare a Fire TV stick , Roku stick or Chromecast™ (not included), then connect it to the projector to watch the content.

## 3. Blurry Image

- \* Adjust focus ring/keystone.
- \* Projector and screen/wall must be in effective distance.

## 4. Remote Unresponsive

- \* Make sure remote points at IR receiver directly.
- \* Do not cover IR receiver.
- \* Try a new pair of AAA batteries.

## 5. Upside Down Images

- \* Go to **Homepage** >  > **Projection Image Setting** > **Projection Mode** to flip the projection image.

## 6. Factory Reset

- \* Go to **Homepage** >  > **System Update** > **Restore Factory** to reset the projector to default settings.



## FCC Statement

Any Changes or modifications not expressly approved by the party responsible for compliance could void the user's authority to operate the equipment. This device complies with part 15 of the FCC Rules. Operation is subject to the following two conditions:

- (1) This device may not cause harmful interference, and
- (2) this device must accept any interference received, including interference that may cause undesired operation.

**NOTE:** This equipment has been tested and found to comply with the limits for a Class B digital device, pursuant to part 15 of the FCC

Rules. These limits are designed to provide reasonable protection against harmful interference in a residential installation. This equipment generates, uses and can radiate radio frequency energy and, if not installed and used in accordance with the instructions, may cause harmful interference to radio communications. However, there is no guarantee that interference will not occur in a particular installation. If this equipment does cause harmful interference to radio or television reception, which can be determined by turning the equipment off and on, the user is encouraged to try to correct the interference by one or more of the following measures:

- Reorient or relocate the receiving antenna.
- Increase the separation between the equipment and receiver.
- Connect the equipment into an outlet on a circuit different from that to which the receiver is connected.
- Consult the dealer or an experienced radio/TV technician for help.

This equipment complies with FCC radiation exposure limits set forth for an uncontrolled environment. This equipment should be installed and operated with minimum distance 20cm between the radiator& your body.

This transmitter must not be co-located or operating in conjunction with any other antenna or transmitter.

## ISED Warning

This device complies with Industry Canada licence-exempt RSS standard(s). Operation is subject to the following two conditions:

- (1) this device may not cause interference, and
- (2) this device must accept any interference, including interference that may cause undesired operation of the device.

Le présent appareil est conforme aux CNR d'Industrie Canada applicables aux appareils radio exempts de licence.

L'exploitation est autorisée aux deux conditions suivantes:

- (1) l'appareil ne doit pas produire de brouillage, et
- (2) l'utilisateur de l'appareil doit accepter tout brouillage radioélectrique subi, même si le brouillage est susceptible d'en compromettre le fonctionnement.

Le présent appareil est conforme

Après examen de ce matériel aux limites d'intensité de champ RF, les utilisateurs peuvent sur l'exposition aux radiofréquences et la conformité and compliance d'acquérir les informations correspondantes. La distance minimale du corps à utiliser le dispositif est de 20cm.

Operation of this device in the band 5150-5250 MHz is restricted to indoor use only.

Le fonctionnement de cet appareil dans la bande 5150-5250 MHz est limité à une utilisation?den intérieur uniquement.

# VANKYO SUPPORT

North America [support@ivankyo.com](mailto:support@ivankyo.com)

United Kingdom [support.uk@ivankyo.com](mailto:support.uk@ivankyo.com)



[www.ivankyo.com](http://www.ivankyo.com)



[@VankyoOfficial](https://www.facebook.com/VankyoOfficial)



[VANKYO](https://www.youtube.com/VANKYO)