

Coeur de  *la Sarre*

NIVREL

DEPUIS 1936



Edition Pièce Unique



Pièce Unique by NIVREL:

A Symbiosis of Watchmaking, Jewellery and Art.

NIVREL: The German Watch with a Swiss Heart	3
The Idea: Pièce Unique by NIVREL	7
The Technique inside: The movement	11
Manual-winding movement	13
Automatic Movement	14
Movement with 5-Minute repeater	15
The Artwork: Handcraft Techniques	17
Goldsmith Artistry and Engraving	19
Skeletonization	21
Stone Carving	22
Hand Painting	24
Your Individual Watch: Pièce Unique by NIVREL	27
Choosing the Motif	28
Choosing the Craftsmanship	29
Choosing the Techniques	29
Choosing even more Customization	30
Pièce Unique by NIVREL: Collection Models	33
Goldsmith Artistry and Engraving	34
Skeletonization	54
Stone Carving	60
Hand Painting	68



NIVREL: The German Watch with a Swiss Heart

NIVREL

THE GERMAN WATCH WITH A SWISS HEART



In 1891, Friedrich Wilhelm Kraemer founded his jewelry and watch store in Germany's Saarbrücken. He and his subsequent generations established 'Juwelier Kraemer' as the finest jewelry store in Saarbrücken. In 1956, Gerd Hofer joined the Kraemer enterprise - being the fourth generation in the business. In 1965, Gerd Hofer became an employee for the Swiss watch company Milus where he represented the company by being the official sales agent for Germany, Austria and the Netherlands since 1978. During this period of time, he also controlled the agencies for the Swiss watch companies Kelek, Revue-Thommen and Hebdomas. After making a name for himself in the watch business Gerd and his wife Gitta acquired

the Swiss watch brand NIVREL in 1993 and integrated the production into the business processes of the Kraemer business in Saarbrücken. Holding up tradition of both roots is a clear commitment for everybody at NIVREL. Mechanical complications with Swiss movements in best execution and finishing as well as gold watches for the upper class design segment are produced with love for the details and astonishing proficiency. NIVREL stands for unique timepieces as a symbiosis between finest watchmaking and astonishing goldsmith craftsmanship.

In 2007, Gerd Hofer's daughter Anja and her partner Guido Grohmann entered the NIVREL business on executive level. Together



ther with all employees they assume the obligation to continue Gerd Hofer's way and to follow his credo in building timepieces on the highest quality level at realistic prices.

MADE IN GERMANY

The design of the NIVREL timepieces is conceived by the ideas of its team members. Many years of experience in the production of watches for the own and other watch brands have gained their love for the details of NIVREL watches. The dials and cases are fabricated exclusively by excellent manufacturers in Germany. The exact realization of the design concepts has top priority. At NIVREL, the slogan 'Made in Germany' is a synonym for true craftsmanship. In today's



market for luxury timepieces we are blessed with a huge variety of wrist watches that - depending on the circumstance and necessity - display the current time and provide other functions. Most of those wrist watches are quite comparable to those of other brands. A NIVREL Pièce Unique watch stands for something different: it combines technical finesse and jeweler craftsmanship in one!



The Idea: Pièce Unique by NIVREL

THE IDEA

PIÈCE UNIQUE BY NIVREL



The flagship of NIVREL's product line is the Edition Pièce Unique. The basic idea of Pièce Unique is the creation of a watch that serves as a timepiece and a piece of jewelry at once. In other words: the creation of a piece of jewelry with the various possibilities that the craftsmanship of a watchmaker and a goldsmith can offer together.

Over time, NIVREL has won a wide variety of artisans for the idea of the Edition Pièce Unique: goldsmiths, engravers, skeletonizers and even miniature painters. Also, the materials used for the dials do not know any boundaries. Almost all potential possibilities have already been used: engraved or skeletonized gold plates, fully

skeletonized and engraved watch movements, miniature paintings on sapphire crystal, and engraved gem stones of different kinds such as agates or rock crystals.

The name Pièce Unique stands for a special kind of watch: truly unique watches. Because of the fact that the materials used are all made by hand, no watch is akin to another one, even if the same motif is used twice. Moreover, Pièce Unique watches are anything but a mass product. Due to the time-consuming production carried out by hand only, Pièce Unique watches are true unique pieces.



PRIORITY: INDIVIDUALITY

Each year, NIVREL presents some new ideas within the Pièce Unique series. These novelties relate either to the presentation of new designs and / or to new ideas how to integrate other types of crafts into the production. NIVREL always tries to show what possibilities exist. The presented models should be understood as an inspiration only for a very unique motif carried out for a customer. The individuality of each watch stays in focus. Thanks to the diverse materials used and their manual production, it is possible to carry out any kind of customer inquiry. Therefore, NIVREL can guarantee to build a very own, individual watch for every customer.

All known standard models of the Edition Pièce Unique, such as the Black Dragon, or the Repetition Peinture featuring a hand-painted horse should only be regarded as design proposals. There are no boundaries when it comes to realizing a customer's requests. The only restriction that is to mention is the time itself. As all Pièce Unique models are handmade, it takes a while to realize an individual request. But the small waiting time is worth it. The result will be a watch that meets the new owner's inquiry perfectly, making her or him carry a unique piece of art.



The Movement: The Technique Inside

THE MOVEMENT

THE TECHNIQUE INSIDE



So far, all watches produced within the Pièce Unique series have been based on mechanical movements. Most of them are realized on the 5-minute repeater. A reason for this is because the main focus of this series is to combine high-end mechanics with the craftsmanship of a goldsmith. Because of its high mechanical expense repeater watches belong to the most complicated watches ever. Even today, repeaters still has a fascination character for watch collectors.

The fascination of course derives from the fact that watchmaking skills allow to build such a complicated mechanism in such a tiny space. Nevertheless, there are some models within the Pièce Unique series that

are not based on a repeater mechanism. Those movements are elaborately decorated and fine finished as well and are automatic or hand-wound, always depending on the chosen motif and craftsmanship. By skipping the repeater function the focus is shifted more towards the jewelry on the dial.



HAND-WOUND MOVEMENTS

Hand-wound mechanical watches have a long tradition in watchmaking. The spring is wound up manually using the crown. The owner of a mechanical winding watch allows himself the luxury to engage with his time and timepiece regularly and intensively. Before the automatic watch was invented the manual winding mechanism was a necessity. Today, it displays the enduring power of tradition and purism. The Pièce Unique series includes models with manual winding, which are always characterized by a very special idea.

For example, NIVREL has realized a Pièce Unique especially for ladies, by creating a

diamond-set amulet. No hands can block the view on the jewelry, as the watch is only visible on the backside of the amulet. By a simple turn, the watch appears on the backside, being realized by using a skeletonized hand-wound movement with astonishing decorations. But in spite the complex finishing, the time can be read clearly with a short glimpse. A red rubin serves as marker for the 12 o'clock index. It is surrounded by hand-engraved ornaments (see page 50).



AUTOMATIC MOVEMENTS

Automatic movements are still the most popular ones among mechanical movements. Those movements recharge their energy by using a so-called rotor. A rotor is a small metal plate on the backside of the movement that is rotating when the owner moves his arm. The rotation winds up the spring of the movement. Automatic movements used in the Edition Pièce Unique are of Swiss origin only. Mainly the ETA calibers 2824-2 and 2892-A2 or the Soprod caliber A10-2 are used.

These calibers are usually elaborately decorated, covered with different gold colors or skeletonized. Depending on the customer's

preference, the movement rotor can be skeletonized and engraved by hand, e.g. with a hand-engraved name, in order to give the watch an individual touch on the backside as well. Therefore, the rotor will be engraved at first. Later it will be coated with rhodium.



REPEATER MOVEMENTS

Specialties of the Edition Pièce Unique by NIVREL are certainly those watches that are realized by using a 5-Minute Repeater movement. Repeater watches have been an integral part of the NIVREL collection from the beginning, and they have strongly influenced the idea of the founder Gerd Hofer to specialize in sophisticated mechanical timepieces.

The horological repeater belongs to the most complicated watches on the market, due to its high complexity. On the front side of the watch one can see little of the complexity, as the additional skills are not visible, but audible.

The term 'repeater' in the world of watches refers to a time piece that is able to play a repeated acoustic memory signal. The original idea behind the invention some 300 years ago was to find out the time in the dark, without the help of church bell or candlelight. The 5-minute repeaters of NIVREL strike the hours with a simple chime of a gong, all completed five minute steps of the current hour with a double chime of two gongs. The acoustic is created by two hammers that strike slightly offset.



The Artwork: Handcraft Techniques

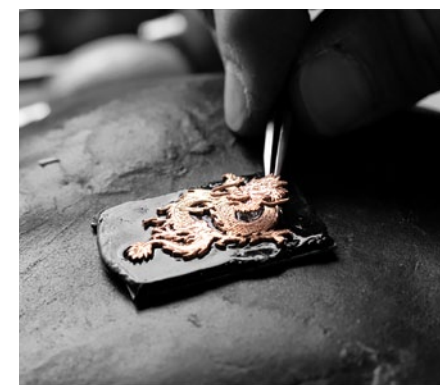
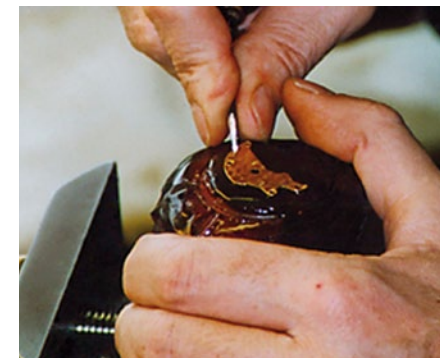
THE ARTWORK

HANDCRAFT TECHNIQUES



The basic idea of Pièce Unique is the creation of a piece of jewelry with the various possibilities that the craftsmanship of a watchmaker and a goldsmith can offer together. Goldsmith artistry has many facets and we at NIVREL understand it not only as a process of forging pure gold. Gold is certainly a fundamental component while producing a Pièce Unique watch, but other high quality materials, such as rock crystals or mother of pearl dials and sapphire crystals, are used too. These materials have to be treated artistically by the appropriate craftsmen such as engravers of gemstones or miniaturists. In recent years, three types of craftsmanship have been established within the Edition Pièce Unique. NIVREL works

with different artists in order to provide the full spectrum of what is possible. The works reflect the crafts of goldsmiths, skeletonizers, engravers and of miniature painters. With their help, NIVREL combines the fascination of a mechanical watch with different types of perfect craftsmanship.



GOLDSMITH ARTISTRY / ENGRAVING

Those Pièces Unique models that are featured in the category of goldsmith work, display individual pieces of jewelry made of precious metal above the movement. Depending on the model, these objects are hand-engraved, hand-skeletonized, partly set with diamonds and made out of 18 ct. rose gold or 18 ct. Palladium white gold. Not only the dials show a piece of jewelry, sometimes the watch case shows hand-engraved ornaments as well.

When we speak of gold engraving, we distinguish between relief engraving and flat engraving. Flat engraving is a decoration that was not worked as a relief

mold. The motif is cut out flat from an 18 ct. rose gold plate. For further embellishment and highlighting of the engraving, different parts of the jewelry are plated in different gold colors, with rhodium and partly embellished with cold enamel.

For a relief engraving, the different motifs are carved out of an 18 ct. rose gold plate significantly deeper in comparison to the flat engraving. Using the relief style, a three-dimensional object can be realized as the motifs can be more highlighted. For further embellishment and highlighting of the engraving, different parts can also be gold-plated, coated with rhodium or partly embellished with cold enamel.



Specialties within the Edition Pièce Unique are repeater watches that feature an additional so-called 'automatic handling device'. A module on top of the repeater gives the possibility to move objects on the dial in consonance with the gong sound of the repeater. These objects (e.g. bells, dolphins, golf sticks) are hand-made of 18 ct. rose gold or white gold. As those moving elements have to be integrated with the watch movement, a close teamwork between goldsmith and watchmaker is necessary when building the watch.

Another specialty within the field of relief engraving is represented by the erotic watches of NIVREL. Our erotic watches clearly

show ambiguous motives, which place interpersonal love into an historical context. Literally, erotic watches are most popular in the Arabic countries and Asia, but we have noticed a consistently growing interest in Europe. Complicated mechanisms as our automatic handling device enhance the appeal due to surprising sound and movement effects. Our erotic watches might be eccentric – but they are a feast for the eyes of classicists of this niche.



SKELETONIZATION

The skeletonization of a watch movement is a very traditional craftsmanship when it comes to the fine finish of a watch. Only years of experience and technical expertise enable a watchmaker to do this challenging and very time consuming work and to produce watches that - due to the fine reduction of the material - become extremely elegant timepieces. From the perspective of a watchmaker, hand-skeletonized movements belong to the high art of watchmaking.

Skeletonized watches do not need dials. The movement and the refinement have priority. Before the parts of the move-



be completely disassembled into its single components. After the later embellishment it has to be reassembled again. The individual components are refined by punching, milling, filling or sawing. This creates gaps within the material that allow a view into the inside of the movement.

The more complex the movement is the more significant is the work that has to be carried out, as more parts need to be skeletonized. For this work instinctive feeling is necessary, as despite all embellishment some technical restrictions are attached to the parts, so that later they can be assembled again and function properly. Therefore the skeletonization of watches is a very



complicated matter. After the bridges and plates are freed from most of its original material, the movement will be further fine finished.

Thus, NIVREL does not only skeletonize the parts. The different wheels, clamps and edges of the recessed bridges are also further embellished. They receive additional engravings, are chased, plated with different gold colors or set with diamonds. Depending on the version, the bridges are completely replaced by hand-engraved motifs made out of 18 ct. gold. Sometimes, the movement rotor will be skeletonized and plated with different gold colors, too. This also allows an engra-

ving of individualized motifs into the rotor.

STONE CARVING

In recent years, NIVREL has been studying the art of gemstone engraving within the Pièce Unique series. In gemstone engraving, natural and artificial gems and precious stones are processed and used as a dial. We show two different types of engraving: the relief engraving and deep engraving.

In the first place, there is the possibility of a complex, convex relief hand-engraving style called 'Cameo', in which the motif is engraved in a multi-layer stone. A multi-layer stone, also called Agate, is a flat polished semi-precious stone, whose natural struc-



ture consists of multiple, usually different colored layers. The motif is engraved from the top, the various layers of the stone cause different color shades that help to create a three-dimensional object.

Secondly, NIVREL is also dedicated to an engraving style called 'Intaglio'. Those dials are made out of a rock crystal. The rock crystal is a colorless gem that is assigned to the group of quartz stones. In the history of jewelry making, it has been used for centuries and was once considered a natural wonder, due to its sleek, extremely hard and transparent property. In ancient times it was assumed that the material was deep-frozen ice, and that's what gave the crystal

its name.

Due to its pure, complete transparency, this stone is ideal for a mirrored engraving. A subsequent coloring of the object creates a 3-dimensional effect for the eye of the beholder. The considerable labor and time required creating such an engraving and painting is immediately apparent when looking at the watch. The intricate details of a motif show that such engraving work can only be executed with utmost precision.



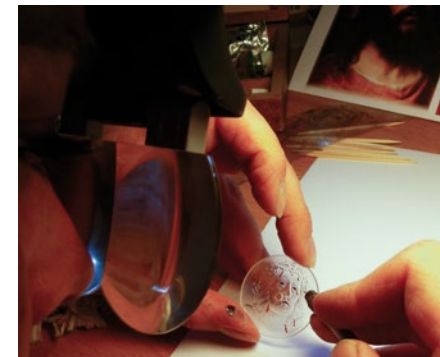
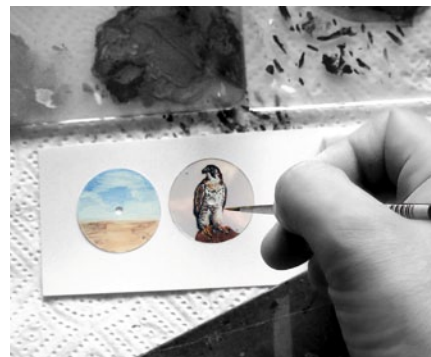
HAND PAINTING

Hand painting is also an integral part of NIVREL's Edition Pièce Unique. The choices of motifs as well as the possibility to execute them are merely endless. The only joint fact that is shared between the different models is that they all show hand-painted dials that are combined with the art of watchmaking.

For several years, the Edition Pièce Unique has included watches with hand-painted dials. For the first time in 2008, NIVREL presented a limited edition of hand-painted watches. Those dials were hand-painted by the recognized Parisian painter Thomas Diego Armonia. Every motive was completely unique as it was only painted once

by the artist himself. Each of them represented one of Armonia's original canvas paintings and was therefore a unique item.

In recent years, the Peinture series was complemented by other motifs, which were painted on dials made of sapphire crystal. For these versions the painting is realized either on two overlapping sapphire crystals or on one sapphire crystal with a mother of pearl dial in the background. The crystal on the back presents the background of the painting while the crystal on the front carries the main motive (so far a tiger, a falcon and an Arabian horse have been realized). By using the double sapphire crystal, an astonishing 3D effect evolves that will fasci-



nate the observer immediately.

Since 2012, NIVREL presents another novelty within the Peinture series. The basic idea for these models was the kind of miniature painting that is often used for glass and porcelain decorations. Following the Dutch 'Delf Fayences', the motifs of this NIVREL series are painted in blue and white. They are hand-painted onto a dial coated with white gloss enamel. The motifs show traditional Dutch landscapes.



Your Individual Watch: Pièce Unique by NIVREL

IHRE INDIVIDUELLE UHR

PIÈCE UNIQUE BY NIVREL



The watches of the Edition Pièce Unique only become a real Piece Unique by their individual appearance. NIVREL makes it possible to realize the very specific inquiries of a customer. This requires, however, some preliminary information that we would like to briefly point out below.

The following steps are required for building a custom Pièce Unique by NIVREL. It should be noted that the following order of steps can be changed depending on the specific project. For example, if the craft style is already determined, a motif can be chosen afterwards. However, it is important to note that not every motif can be carried out with every style of craftsmanship. Especially in-

tricate and detailed designs are difficult to execute with the gold engraving style. A stone carving with subsequent painting however would probably be more suitable, as the example of the Crystal Dragon shows on page 66.

CHOOSING THE MOTIF

The motif for the dial and jewelry of a Pièce Unique watch can be chosen just as the customer wants it to be. However, one should have in mind the position of the hands on the dial when choosing the motif. The position of the hands should not distract the motif. Therefore, NIVREL offers help. Customers should feel free to send us their ideas. We will create a first rough sketch, so that



the customer can get a first idea of what the motif will look like once it is inside the watch.

CHOOSING THE CRAFTSMENSHIP

Both, motif and chosen craft are interdependent. Depending on the choice of motif, the one or the other crafts style might be better than another. Especially highly detailed motifs are ideal for the intaglio stone engraving stone or miniature painting on sapphire crystal. Conversely, subjects that need to show great plasticity are perfect for gold engraving.

Feel free to tell us about your motif idea. We will show you what craftsmanship will bring the best results. We at NIVREL are constant-

ly occupied with trying new techniques as well. Therefore we are also happy to learn about your first choice of craftsmanship and we will let you know what is possible and what might be not. If you have only chosen a craft, we will help you finding the right motif.

CHOOSING THE TECHNIQUE

The choice of technology, and thus the choice of the watch movement is certainly one of the most important decisions within the implementation of a Pièce Unique watch. The choice should be based on a few considerations. Because depending on the chosen craft, a certain case form might be predestined. And as the case has to fit to the watch movement, the de-



cision might be dependent on that fact.

For example, a stone-carved dial is perfect for one of our watches featuring the 5-Minute repeater. NIVREL can offer two types of cases for a repeater watch, one with a flat bezel and one with a higher bezel. Because a relief stone engraving with its three-dimensional structure is quite high in comparison to other executions, it has to be put into one of our watch cases with the higher bezel. On the other hand, a flat gold engraving or a miniature painting on sapphire crystal is well suited for the flat case bezel. We will be happy to guide you through the possibilities.

CHOOSING MORE CUSTOMIZATION

A Pièce Unique by NIVREL can be further adjusted to your wishes so that it receives your very own personal touch. There are no barriers when realizing customer requests. The only restriction that is to mention is the time itself, as Pièce Unique watches are crafted in pure form, their realization takes time.

Thus, the rotor of an automatic watch can completely adapted to your individual needs. As a true example we want to mention a cradle that we once engraved into a rotor. A customer wanted to have a watch in celebration of his first child and as a reminder he chose a special engra-



ving in the rotor. It showed a child's cradle.

Also with regard to the case design, additional refinements can be made. For example, a gold case can receive a special engraving, which will later be covered with cold enamel, so that a very unique and elegant designed case is created.

Even the hands can be totally customized in order to make your dream watch come true. As an example, we would like to refer to the watch above that received some hand-made rose gold pointers showing a dragon. The minute hand is the tail of the dragon, while the hour hand shows the dragon's body.



Pièce Unique by NIVREL: Collection Moldels

REPETITION TIGER

GOLDSMITH ARTISTRY AND ENGRAVING



Reference N 950.001 TIGER: The tiger and the jungle plants are sawed out of a massive 18 ct. rosegold plate, hand-skeletonized and engraved. The stripes of the tiger are covered with black rhodium. 7 diamonds (F, if, tot. appr. 0.07 ct.) are set in a sapphire crystal, which is located between tiger and skeletonized movement. They serve as 5-minute markers.

TECHNICAL DETAILS:

Automatic movement based on calibre ETA 2892-A2, repeater module, fine finishing, engraved. The rotor is skeletonized by hand and carries a unique number. Indication of hours and minutes, 5-minute repeater. Black-coloured Brequet hands. Case in steel 316l, 18 ct. rose gold, or 18 ct. white gold, domed sapphire crystal, screwed case back with sapphire crystal, water-resistant to 5 bar. Diameter: 42 mm, Height: 15.1 mm. Louisiana Alligator leather strap in brown or black with NIVREL deployment buckle.



REPETITION Dragon

GOLDSMITH ARTISTRY AND ENGRAVING



Reference N 950.001 Dragon: The dragon is sawed out of a massive 18 ct. rosegold plate, hand-skeletonized and engraved. 10 diamonds are set in a sapphire crystal, which is located between dragon and skeletonized movement. They serve as 5-minute markers.

TECHNICAL DETAILS:

Automatic movement based on calibre ETA 2892-A2, repeater module, fine finishing, engraved. The rotor is skeletonized by hand and carries a unique number. Indication of hours and minutes, 5-minute repeater. Black-coloured Brequet hands. Case in steel 316l, 18 ct. rose gold, or 18 ct. white gold, domed sapphire crystal, screwed case back with sapphire crystal, water-resistant to 5 bar. Diameter: 42 mm, Height: 15.1 mm. Louisiana Alligator leather strap in brown or black with NIVREL deployment buckle.



REPETITION EROTIQUE II

GOLDSMITH ARTISTRY AND ENGRAVING



Reference N 950.001 ERO II: The erotic scene is sawed out from a massive 18 ct. rosegold plate, hand-skeletonized and engraved. The couple has several parts in solid 18 ct. yellow gold. For the colorful design the finished jewel will be partially plated in different gold colors. When launched the repeater, the couple moves in an erotic pose in front of a historical background.

TECHNICAL DETAILS:

Automatic movement based on calibre ETA 2892-A2, repeater module, fine finishing, engraved. The rotor is skeletonized by hand and carries a unique number. Indication of hours and minutes, 5-minute repeater. Black-coloured Brequet hands. Case in steel 316l, 18 ct. rose gold, or 18 ct. white gold, domed sapphire crystal, screwed case back with sapphire crystal, water-resistant to 5 bar. Diameter: 42 mm, Height: 15.1 mm. Louisiana Alligator leather strap in brown or black with NIVREL deployment buckle.



REPETITION EROTIQUE III

GOLDSMITH ARTISTRY AND ENGRAVING



Reference N 950.001 ERO III: The erotic scene is sawed out from a massive 18 ct. rosegold plate, hand-skettonized and engraved. For the colorful design the finished jewel will be partially plated in different gold colors. When launched the repeater, the scenery moves in an erotic pose.

TECHNICAL DETAILS:

Automatic movement based on calibre ETA 2892-A2, repeater module, fine finishing, engraved. The rotor is skeltonized by hand and carries a unique number. Indication of hours and minutes, 5-minute repeater. Black-coloured Brequet hands. Case in steel 316l, 18 ct. rose gold, or 18 ct. white gold, domed sapphire crystal, screwed case back with sapphire crystal, water-resistant to 5 bar. Diameter: 42 mm, Height: 15.1 mm. Louisiana Alligator leather strap in brown or black with NIVREL deployment buckle.



REPETITION BLACK DRAGON I

GOLDSMITH ARTISTRY AND ENGRAVING



Reference N 950.001 BD I: The dragon is sawed out of a massive 18 ct. rosegold plate, hand-skeletonized and engraved. For the colorful design the finished jewel will be partially plated in different gold colors, rhodinated and painted with cold enamel. The dragon is attached on a hand-guilloché, black black galvanized dial.

TECHNICAL DETAILS:

Automatic movement based on calibre ETA 2892-A2, repeater module, fine finishing, engraved. The rotor is skeletonized by hand and carries a unique number. Indication of hours and minutes, 5-minute repeater. Rosegold-coloured Brequet hands. Case in steel 316l, 18 ct. rose gold, or 18 ct. white gold, domed sapphire crystal, screwed case back with sapphire crystal, water-resistant to 5 bar. Diameter: 42 mm, Height: 15.1 mm. Louisiana Alligator leather strap in brown or black with NIVREL deployment buckle.



REPETITION BLACK DRAGON II

GOLDSMITH ARTISTRY AND ENGRAVING



Reference N 950.001 BD II: The dragon is sawed out of a massive 18 ct. rosegold plate, hand-skeletonized and engraved. For the colorful design the finished jewel will be partially plated in different gold colors, rhodinated and painted with cold enamel. The dragon is attached on a hand-guilloched, black black galvanized dial. When launched the repeater, the Dragon shakes his head to the bell sound.

TECHNICAL DETAILS:

Automatic movement based on calibre ETA 2892-A2, repeater module, fine finishing, engraved. The rotor is skeletonized by hand and carries a unique number. Indication of hours and minutes, 5-minute repeater. Rosegold-coloured Brequet hands. Case in steel 316l, 18 ct. rose gold, or 18 ct. white gold, domed sapphire crystal, screwed case back with sapphire crystal, water-resistant to 5 bar. Diameter: 42 mm, Height: 15.1 mm. Louisiana Alligator leather strap in brown or black with NIVREL deployment buckle.



REPETITION POLO

GOLDSMITH ARTISTRY AND ENGRAVING



Reference N 950.001 POLO: The polo player and the horse are sawed out of a massive 18 ct. rosegold plate, hand-skeletonized and engraved. For the colorful design the finished jewel will be partially plated in different gold colors, rhodinated and painted with cold enamel. The motive is attached on a hand-guilloched, green galvanized dial. When launched the repeater, the polo player swings his stick against the ball (a brilliant at 5 o'clock).

TECHNICAL DETAILS:

Automatic movement based on calibre ETA 2892-A2, repeater module, fine finishing, engraved. The rotor is skeletonized by hand and carries a unique number. Indication of hours and minutes, 5-minute repeater. Black-coloured Brequet hands. Case in steel 316l, 18 ct. rose gold, or 18 ct. white gold, domed sapphire crystal, screwed case back with sapphire crystal, water-resistant to 5 bar. Diameter: 42 mm, Height: 15.1 mm. Louisiana Alligator leather strap in brown or black with NIVREL deployment buckle.



BLACK DRAGON AUTOMATIQUE

GOLDSMITH ARTISTRY AND ENGRAVING



Reference N 421.001 BD I: The dragon is sawed out of a massive 18 ct. rosegold plate, hand-skeletonized and engraved. For the colorful design the finished jewel will be partially plated in different gold colors, rhodinated and painted with cold enamel. The dragon is attached on a hand-guilloché, black black galvanized dial.

TECHNICAL DETAILS:

Automatic movement calibre ETA 2824-2, skeletonized, skeletonized rotor. Indication of hours and minutes. Rosegold coloured Brequet hands. Case in steel, domed sapphire crystal, screwed case back with mineral crystal, water-resistant to 5 bar. Diameter: 42 mm, Height: 9,6 mm. Louisiana Alligator leather strap in brown or black with NIVREL deployment buckle.



BLACK DRAGON AMULETTE

GOLDSMITH ARTISTRY AND ENGRAVING



Reference N 315.001 BD I: The dragon is sawed out of a massive 18 ct. rosegold plate, hand-skeletonized and engraved. For the colorful design the finished jewel will be partially plated in different gold colors, rhodinated and painted with cold enamel. The dragon is attached on a hand-guilloché, black black galvanized dial. The amulet shows on the back a skeletonized movement. A trimmed, red ruby marks the 12 o' clock position. The case of the amulet is set with 192 diamonds.

TECHNICAL DETAILS:

Handwinding movement calibre ETA Peseux 7001, hand-engraved case holding. Indication of hours and minutes. Hand-engraved and flame-blued steel hands. Case in steel 316L, set with 192 diamonds (F, i.f., tot. ca. 1,315 ct), sapphire crystal, screwed case back with sapphire crystal, water-resistant to 5 bar, Diameter: 42 mm, Height: 6 mm.



REPETITION VARGA

GOLDSMITH ARTISTRY AND ENGRAVING



The highlight of the watch is the dial, handmade out of 18 ct. gold, that spans like a spider web over the repeater module and its helical arrangement of the diamonds set in 18k rose gold. The net consists of several superimposed gold threads that are woven by hand into each other and so create a unique work of art.

TECHNICAL DETAILS:

Automatic movement based on calibre ETA 2892-A2, repeater module, fine finishing, engraved. The rotor is skeletonized by hand and carries a unique number. Indication of hours and minutes, 5-minute repeater. Black-coloured Brequet hands. Case in steel 316l, 18 ct. rose gold, or 18 ct. white gold, domed sapphire crystal, screwed case back with sapphire crystal, water-resistant to 5 bar. Diameter: 42 mm, Height: 15.1 mm. Louisiana Alligator leather strap in brown or black with NIVREL deployment buckle.



REPETITION SKELETTE

SKELETONIZATION



Reference N 950.001 ARCADE: NIVREL revives in the skeletonized repeater models the old craft techniques of skeletonizing, engraving and the production of guilloches. The bridges and plates of repetition are first hand- skeletonized and then hand-engraved. The well visible star wheel (under which the hour wheel is located) is also hand-engraved. The hours and change wheels of the repetition are also provided with a radial-wave guilloche.

TECHNICAL DETAILS:

Automatic movement based on calibre ETA 2892-A2, repeater module, fine finishing, engraved. The rotor is skeletonized by hand and carries a unique number. Indication of hours and minutes, 5-minute repeater. Black-coloured Brequet hands. Case in steel 316l, 18 ct. rose gold, or 18 ct. white gold, domed sapphire crystal, screwed case back with sapphire crystal, water-resistant to 5 bar. Diameter: 42 mm, Height: 13.1 mm. Louisiana Alligator leather strap in brown or black with NIVREL deployment buckle.



REPETITION DRAGON BALL

SKELETONIZATION



Reference N 950.001 A DRAGON BALL: The bridges and plates of repetition are first hand-skeletonized and then hand-engraved. The well visible star wheel (under which the hour wheel is located) is also hand-engraved. The hours and change wheels of the repetition are also provided with a radial-wave guilloché. The big bridge at 6 o'clock is replaced by a 18 ct. rose gold, skeletonized and engraved dragon. On the hammer of the repetition a ball made out of 18 ct. rose gold is placed. When launching the repeater, the ball is moving into the mouth of the dragon.

TECHNICAL DETAILS:

Automatic movement based on calibre ETA 2892-A2, repeater module, fine finishing, engraved. The rotor is skeletonized by hand and carries a unique number. Indication of hours and minutes, 5-minute repeater. Black-coloured Brequet hands. Case in steel 316l, 18 ct. rose gold, or 18 ct. white gold, domed sapphire crystal, screwed case back with sapphire crystal, water-resistant to 5 bar. Diameter: 42 mm, Height: 13.1 mm. Louisiana Alligator leather strap in brown or black with NIVREL deployment buckle.



La Fenêtre

SKELETONIZATION



Reference N 320.001 HSK: When looking at the watch its naming is understandable: A hand-wound movement Unitas 6498-1 is used, its bridges and plates are rose gold plated, hand-skeletonized and hand-engraved. In addition, the movement is provided with a flame-blued swan-neck fine adjustment and a gold plated screw balance.

TECHNISCHE DETAILS:

Hand-wound mechanical movement ETA Unitas 6498-1, rose-coloured and gold-plated or rhodinated movement, hand-skeletonized and hand-engraved, gold-plated screwed balance, blued swans neck fine adjustment, hand-engraved, hand-skeletonized and rosegold-plated balance cock, blued screws. Indication of hours, minutes and small second. Flame-blued hands. Case in Steel, domed antireflection sapphire crystal, screwed case back with sapphire crystal, water-resistant to 5 bar, diameter: 42 mm, height: 12.4 mm. Louisiana Alligator leather strap in brown or black with NIVREL deployment buckle.



REPETITION STONE PORTRAIT

STONE CARVING



Reference N 950.001 STONE: The dial represents a complicated hand-made raised relief engraving, called Cameo, which is engraved in a stone layer (Agate). The portrait shown here was engraved by hand in a black and white layer agate (Onyx), the various shades of color are caused by the different layers of the stone.

TECHNICAL DETAILS:

Automatic movement based on calibre ETA 2892-A2, repeater module, fine finishing, engraved. The rotor is skeletonized by hand and carries a unique number. Indication of hours and minutes, 5-minute repeater. Black-coloured Brequet hands. Case in steel 316l, 18 ct. rose gold, or 18 ct. white gold, domed sapphire crystal, screwed case back with sapphire crystal, water-resistant to 5 bar. Diameter: 42 mm, Height: 15.1 mm. Louisiana Alligator leather strap in brown or black with NIVREL deployment buckle.



AUTOMATIQUE STONE DRAGON

STONE CARVING



Reference N 950.001 STONE DRAGON: The dial represents a complicated hand-made raised relief engraving, called Cameo, which is engraved in a stone layer (Agate). The dragon motive shown here was engraved by hand in a red and white layer agate (Karneol), the various shades of color are caused by the different layers of the stone.

TECHNICAL DETAILS:

Automatic movement based on calibre ETA 2892-A2, repeater module, fine finishing, engraved. The rotor is skeletonized by hand and carries a unique number. Indication of hours and minutes, 5-minute repeater. Silver-coloured Brequet hands. Case in steel 316l, 18 ct. rose gold, or 18 ct. white gold, domed sapphire crystal, screwed case back with sapphire crystal, water-resistant to 5 bar. Diameter: 42 mm, Height: 15.1 mm. Louisiana Alligator leather strap in brown or black with NIVREL deployment buckle.



AUTOMATIQUE STONE HORSE

STONE CARVING



Reference N 950.001 STONE: The dial represents a complicated hand-made raised relief engraving, called Cameo, which is engraved in a stone layer (Agate). The horse motive shown here was engraved by hand in a black and white layer agate (Onyx), the various shades of color are caused by the different layers of the stone.

TECHNISCHE DETAILS:

Automatikwerk Kaliber ETA 2824-2, skelettiert, Schwungmasse skelettiert. Anzeige von Stunden und Minuten. Roségold-farbene Brequenzeiger. Gehäuse aus Edelstahl, gewölbtes Saphirglas, verschraubter Boden mit Mineralglas, 5 bar wasserdicht, Durchmesser: 42 mm, Höhe: 9,6 mm. Lederband aus Louisiana Alligator in braun oder schwarz mit NIVREL Doppelfaltschließe.



REPETITION CRYSTAL DRAGON

STONE CARVING



Reference N 950.001 CRYSTAL DRAGON: As a base plate of the motif a mother of pearl dial is used. The dragon is hand-engraved as an intaglio-engraving in a rock crystal and hand painted thereafter. The subsequent painting of the motive a 3-dimensional effect is created. As background, a mother of pearl dial is selected which gives the stone an elegant bluish character.

TECHNICAL DETAILS:

Automatic movement based on calibre ETA 2892-A2, repeater module, fine finishing, engraved. The rotor is skeletonized by hand and carries a unique number. Indication of hours and minutes, 5-minute repeater. Gold-coloured Brequet hands. Case in steel 316l, 18 ct. rose gold, or 18 ct. white gold, domed sapphire crystal, screwed case back with sapphire crystal, water-resistant to 5 bar. Diameter: 42 mm, Height: 15.1 mm. Louisiana Alligator leather strap in brown or black with NIVREL deployment buckle.



REPETITION PAINT FALCON

HAND PAINTING



Reference N 950.001 PAINT FALCON: The motif of the dial (here: a hawk) is painted by hand. As a base plate a mother of pearl dial is used, which represents the sky. Above the mother of pearl plate is a sapphire crystal on which the falcon is painted by hand. The case and the crown of the watch can be paved with diamonds.

TECHNICAL DETAILS:

Automatic movement based on calibre ETA 2892-A2, repeater module, fine finishing, engraved. The rotor is skeletonized by hand and carries a unique number. Indication of hours and minutes, 5-minute repeater. Rosegold-coloured Brequet hands. Case in steel 316l, 18 ct. rose gold, or 18 ct. white gold, domed sapphire crystal, screwed case back with sapphire crystal, water-resistant to 5 bar. Diameter: 42 mm, Height: 13.1 mm. Louisiana Alligator leather strap in brown or black with NIVREL deployment buckle.



REPETITION PAINT HORSE

HAND PAINTING



Reference N 950.001 PAINT HORSE: The motif of the dial (here: an Arabian mare) is painted by hand. As a base plate and dial two overlaying sapphire crystals are used. The lower sapphire crystal represents the background of the painting, while the front sapphire crystal shows the fundamental motif of the mare. The double crystals give a 3D effect, which immediately fascinates the viewer.

TECHNICAL DETAILS:

Automatic movement based on calibre ETA 2892-A2, repeater module, fine finishing, engraved. The rotor is skeletonized by hand and carries a unique number. Indication of hours and minutes, 5-minute repeater. White-coloured Brequet hands. Case in steel 316L, 18 ct. rose gold, or 18 ct. white gold, domed sapphire crystal, screwed case back with sapphire crystal, water-resistant to 5 bar. Diameter: 42 mm, Height: 13.1 mm. Louisiana Alligator leather strap in brown or black with NIVREL deployment buckle.



REPETITION PAINT TIGER

HAND PAINTING



Reference N 950.001 PAINT TIGER: The motif of the dial (here: a Tiger) is painted by hand. As a base plate and dial two overlaying sapphire crystals are used. The lower sapphire crystal represents the background of the painting, while the front sapphire crystal shows the fundamental motif of the tiger. The double crystals give a 3D effect, which immediately fascinates the viewer.

TECHNICAL DETAILS:

Automatic movement based on calibre ETA 2892-A2, repeater module, fine finishing, engraved. The rotor is skeletonized by hand and carries a unique number. Indication of hours and minutes, 5-minute repeater. Green-coloured Brequet hands. Case in steel 316l, 18 ct. rose gold, or 18 ct. white gold, domed sapphire crystal, screwed case back with sapphire crystal, water-resistant to 5 bar. Diameter: 42 mm, Height: 13.1 mm. Louisiana Alligator leather strap in brown or black with NIVREL deployment buckle.



REPETITION PAINT TDA

HAND PAINTING



Reference N 950.001 PAINT TDA: This series of watches is created together with the Paris-based artist Thomas Diego Armonia. The artist paints each dial by hand, each motif will be painted only once. Each one represents one of the original paintings of Thomas Diego Armonia. The case back bears the engraved signature of the artist.

TECHNICAL DETAILS:

Automatic movement based on calibre ETA 2892-A2, repeater module, fine finishing, engraved. The rotor is skeletonized by hand and carries a unique number. Indication of hours and minutes, 5-minute repeater. Black-coloured Brequet hands. Case in steel 316l, 18 ct. rose gold, or 18 ct. white gold, domed sapphire crystal, screwed case back with sapphire crystal, water-resistant to 5 bar. Diameter: 42 mm, Height: 13.1 mm. Louisiana Alligator leather strap in brown or black with NIVREL deployment buckle.





Coeur de la Sarre

NIVREL Uhren - Gerd Hofer GmbH
Kößmannstraße 3, D-66119 Saarbrücken, Germany
Tel.: +49 (0)681 5846576

www.nivrel.com

shop.nivrel.com

www.facebook.com/nivrel