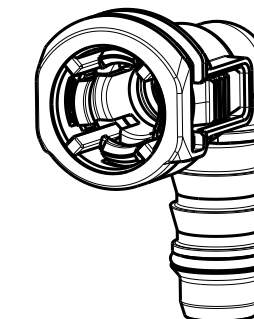
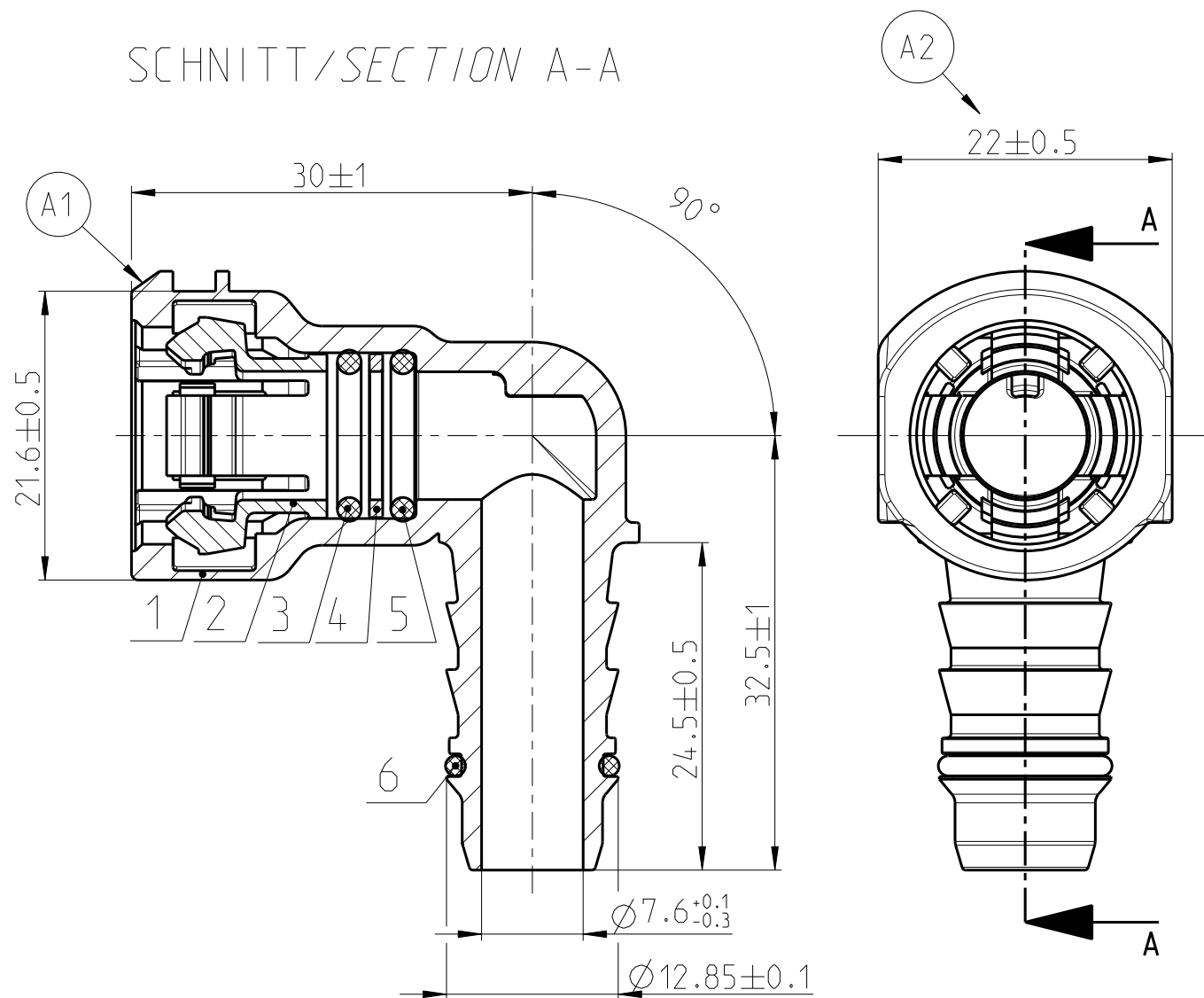


Angebotszeichnung  
QUOTATION DRAWING

Teil-Nr ITEM-NO	Stueck QTY	Benennung PART - NAME	Werkstoff MATERIAL	Oberflaeche SURFACE
1	1	Housing NW 3/8''-3/8''-90°	PA12-GF50	black
2	1	Retainer NW 3/8''	PA12-GF30	black
3	1	O-RING 9.25 X 1.78	FVMQ	blue
4	1	Spacer NW 3/8''	PA6-GF30	black
5	1	O-RING 9.25 X 1.78	FPM	black
6	1	O-RING 10 X 1.5	FPM	black

SCHNITT/SECTION A-A

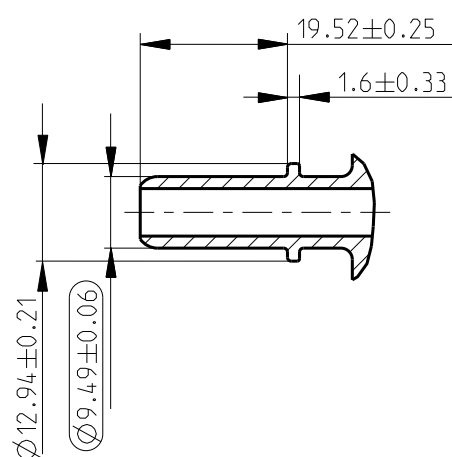


MASSSTAB/SCALE 1:1

B2

NORMAQUICK - ASSEMBLY MARKING	
Customer part-No.:	-
Trademark:	-
Manufacturer code:	NORMA-RSS
NORMA date code:	XX YY
Material code molding part:	>PA12-GF50<

Anschlussstutzen/Connecting spigot  
gemaess/acc. to SAE J2044  
MASSSTAB/SCALE 1:1



-	-	-	-	-	-	-	-	
-	-	-	-	-	-	-	-	
-	B	1	1) Drawing seperated; 2) Marking table added;	-	2013-06-12	Chopade	Kaya	
-	A	2	1: Gehaeusekopf geaendert (Stege fuer Montageindikator ergaenzt) 2: 22-0.3 war 22±0.5 1: Housing head changed (bars for mounting indicator added) 2: 22-0.3 was 22±0.5	606864	2008-07-22	TS/IC	Jacksteit	
INDEX Teil PART	Zeichg DWG	Anz. QTY.	Aenderung DESCRIPTION		Aend.Nr. CHANGE-NO.	Datum DATE	Bearb. DRAWN	Gepr. CHECKED
Allgemeintoleranz: GENERAL TOLERANCE:		Form- und Lagetoleranz: FORM AND POS. TOL.:		Abmass fuer Winkel: DEVIATION FOR ANGLE:	Gewicht / WEIGHT: errechnet CALCULATED	Volumen: VOLUME:	Pruefkennzeichnung: TEST MARKING:	
-		-		±2°	-	- cm <sup>3</sup>		
Projektions-Methode 1 1st ANGLE PROJECTION DIN ISO 128-30		Material: see parts list Material-No.: - Oberflaeche: see parts list SURF. QUAL.: -		PART NAME: NORMAQUICK S NW 3/8''-3/8''-90° 4-arm retaining spring, black for SAE-Spigot Ø9.49 mm				
NORMA-Patentnummer: PATENT NUMBER:		Massstab: SCALE: 2:1	Datum/DATE	Name/NAME	Benennung: NORMAQUICK S NW 3/8''-3/8''-90° 4-Arm-Haltefeder, schwarz fuer SAE-Stutzen Ø9.49 mm			
Bandlaenge: LENGTH OF BAND:		Schutzvermerk nach ISO 16016 beachten CONSIDER AFTER PROTECTION NOTICE ISO 16016						
ZNE:		Kunde/CUSTOMER:		DIN A	SHEET: SHEETS			
Ursprung/Anfrage: ENQUIRY-No.:		NORMA Germany GmbH Postfach 1149 • 63461 Maintal		3	1	1		
9901724907		© COPYRIGHT BY NORMA Group		Zeichnungs-Nr./DRAWING-NO.:			INDEX PART DWG	TYPE
CAD-SYSTEM Pro/Engineer		DRAWING-NAME: 07158574_010_Q		0715 8574 010			00	0B
		SUB.F.: -		SUB.FROM: -				Q
		MODEL-NAME: 07158574010		MODEL-TYP: ASSEM				