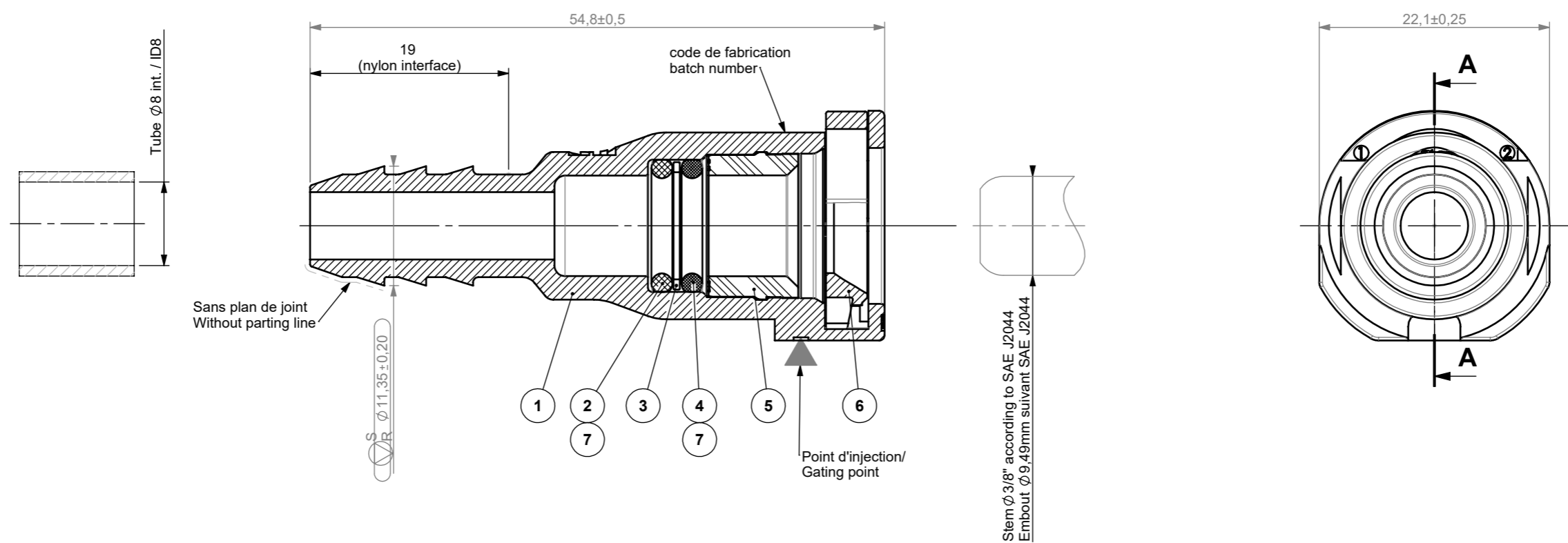
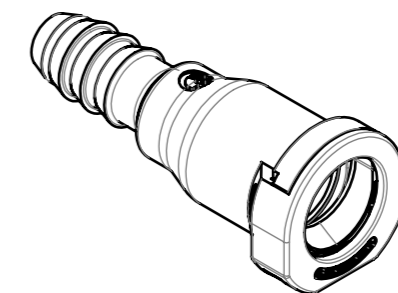


COUPE A-A



7	2	Graisse/Grease	ASTM D217
6	1	Bague / Retainer	PA12 GF30 ASTM D4066 PA420 G30 A22350
5	1	Douille/Sleeve	PA12 GF30 ASTM D4066 PA420 G30 A22350
4	1	Joint Torique/O'ring	Fluorosilicone/Fluorosilicon WSA-M2D401-A6 GM6268M Type2 ASTM D2000 M2FK606 A19 EF31 F19 Z1 Z2 Z3
3	1	Rondelle/Washer	Laiton / Brass
2	1	Joint Torique/O'ring	Fluorocarbone/Fluorocarbon WSA-M2D401-A8 GM6268M Type3 ASTM D2000 M2HK710 A1-10 EF31 Z1 Z2
1	1	Corps/Body	PA12 GF30 noir/black ASTM D4066 PA420 G30 A22350
N°	Nb	Désignation/Part Name	Matière/Material

08	Blanc/White
07	Orange
06	Gris/Grey
05	Jaune/Yellow
04	Bleu/Blue
03	Rouge/Red
02	vert/Green
01	Noir/Black
00	Naturel/Natural
Code YY	Couleur/Color
YY Code	



- Product design comply with SAE J2044.



Plan Approuvé par/Approved by: MCI		Date: 07/03/2018		Echelle/Scale: 2:1		Traitement/Treatment: A3		Unit: mm	
Volume : 6134.48 mm3		Tolérances générales/General tolerances Ra - Ang: - Dia: ±0.5		Créé par/ Created by: KAN		Désignation/Title RE droit Ø9.49mm, 2jts, sapin 3 dents pour tube int. Ø8 Straight QC Ø3/8", 2 O'Rings, 3 Barbed on tail for tube ID8			
Date: 27/02/2018		Description des modifications/Description of modifications Background template updated Add stem in section A-A Removal 2 possible gating points		SPY		Date: 06/04/2000		Référence plan Drawing number A613A53-08-YY	
Date		Description des modifications/Description of modifications (Annulent et remplace la révision de plan précédente/Canceled and supplanted previous revision)		Etude Study		NORMA Autoline France SAS 24, rue Blaise Pascal BP 48002 F-35580 GUICHEN		Révision / 07	