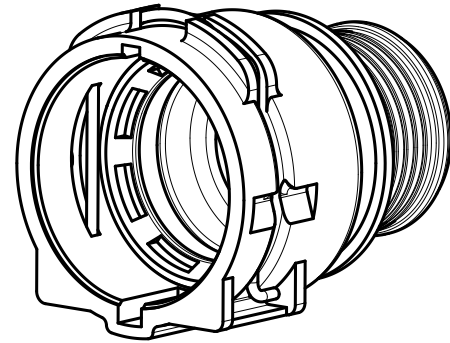
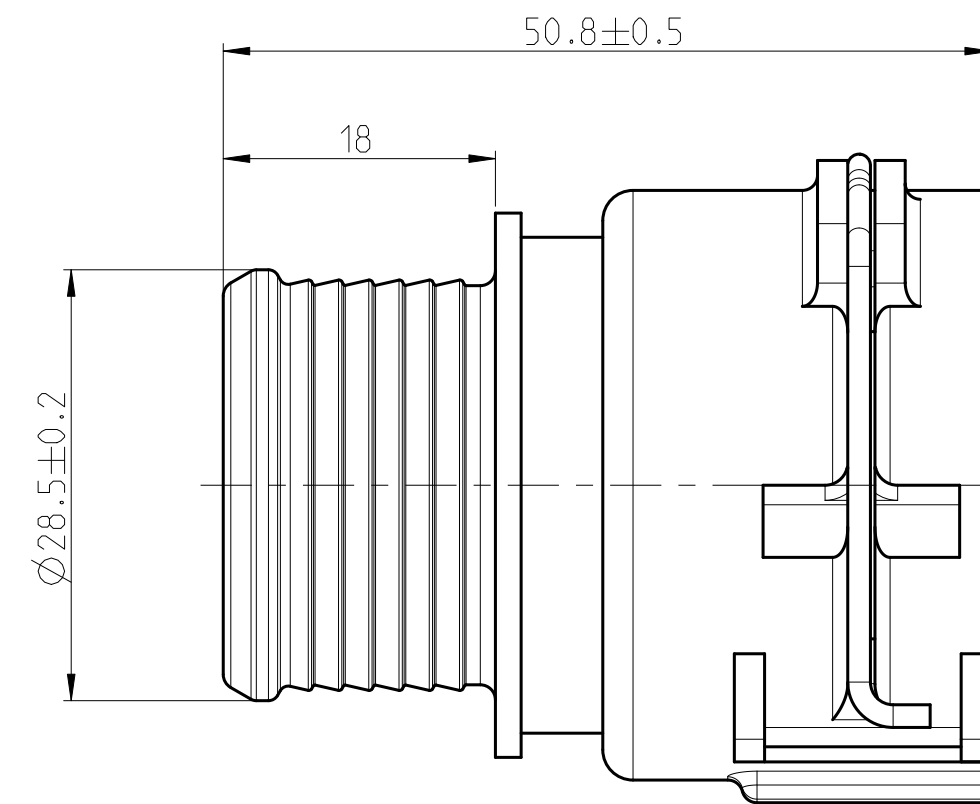
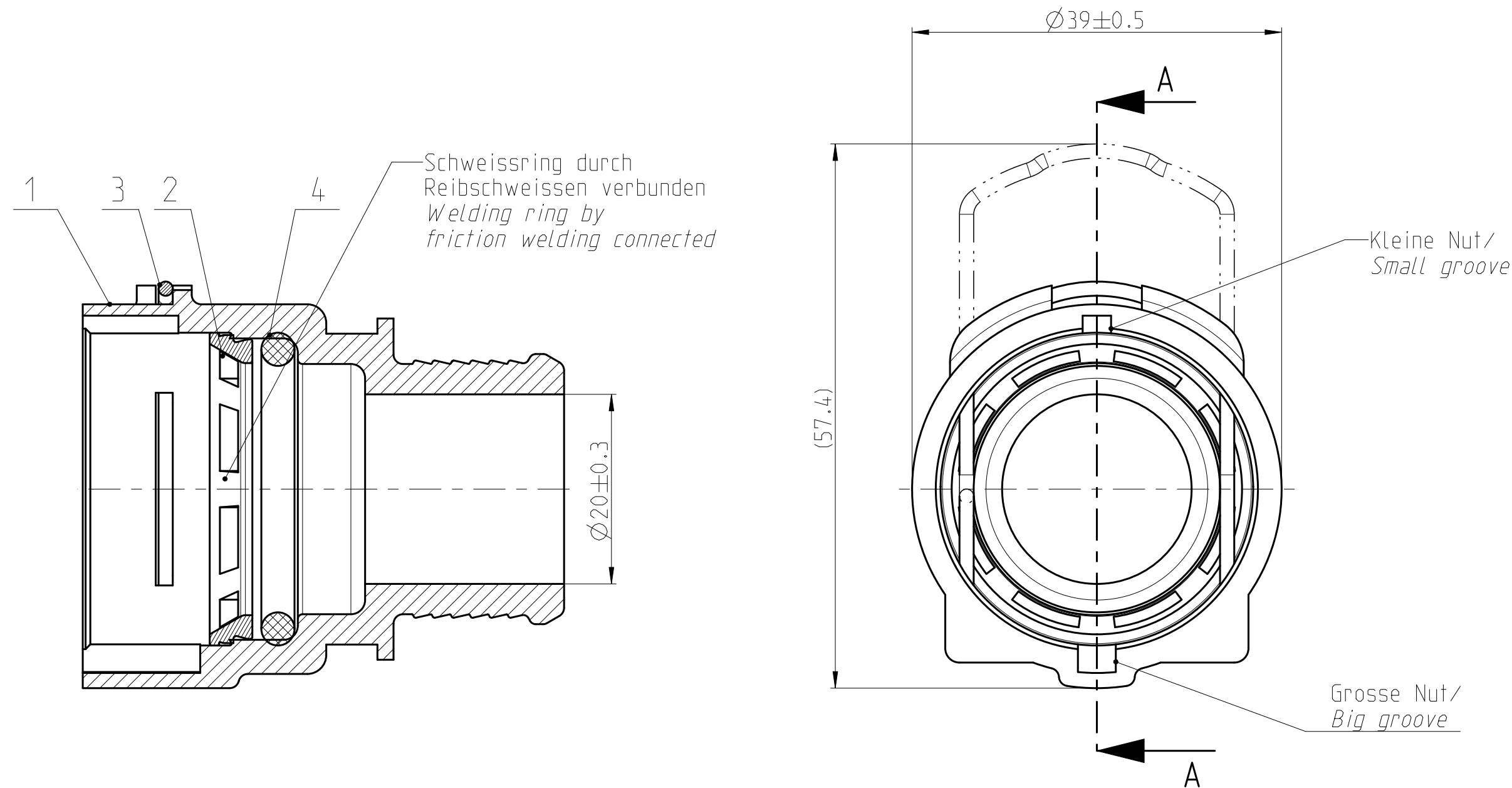


Angebotszeichnung
QUOTATION DRAWING

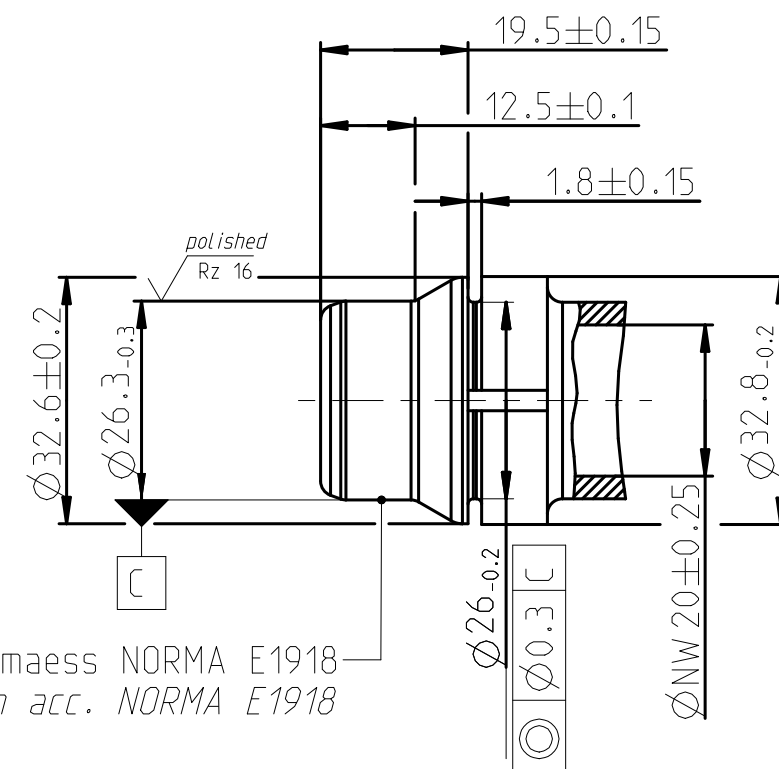
Teil-Nr. ITEM-NO.	Stueck QTY	Benennung PART - NAME	Werkstoff MATERIAL	Oberflaeche SURFACE
1	1	Housing NW 20-0°	PA66 - GF30	black
2	1	Weld ring NW20	PA66 - GF30	black
3	1	Locking bail NW20	EN10270-3-1.4310-NS-1.5	blank
4	1	O-RING 26.0 X 3.5	EPDM-60	black



MASSSTAB/SCALE 1:1



Ansicht Stutzen/View spigot
MASSSTAB/SCALE 1:1



Nicht angegebene Masse gemäss NORMA E1918
Not specified dimension acc. NORMA E1918

Performance features for NQ PS3 - VDA	
Medium	coolant water
Operation temperature	-40°C thru 135°C, short-term up to 150°C (max. 30 min. over lifetime)
Operation pressure	0 to 2 bar, partial pulsating (sinusoidal)

NORMAQUICK - ASSEMBLY MARKING	
Customer part-No.:	-
Trademark:	-
Manufacturer code:	NORMA-RSS
NORMA date code:	XX YY
Material code molding part:	>PA66-GF30<

INDEX Teil/ PART	Anz. QTY.	Aenderung DESCRIPTION	Aend.Nr. CHANGE-NO.	Datum DATE	Bearb. DRAWN	Gepr. CHECKED
-	-	-	-	-	-	-
-	-	-	-	-	-	-
-	-	-	-	-	-	-
-	A	1) drawing type updated; 2) view updated; 3) text added	-	2013-01-15	Chopade	Ries
Allgemeintoleranz: GENERAL TOLERANCE:		Form- und Lagetoleranz: FORM AND POS. TOL.:	Abmass fuer Winkel: DEVIATION FOR ANGLE:	Gewicht / WEIGHT: errechnet CALCULATED	Volumen: VOLUME:	Pruefkennzeichnung: TEST MARKING:
DIN 16901-130		DIN ISO 2768	±2°	-	- cm ³	-
Projektions-Methode 1 1st ANGLE PROJECTION DIN ISO 128-30		Material: see parts list	PART NAME: NORMAQUICK PS3 NW 20-0°			
NORMA-Patentnummer: PATENT NUMBER:		Material-No.: -	-			
NORMA-Patentnummer: PATENT NUMBER:		Oberflaeche: see parts list	-			
NORMA-Patentnummer: PATENT NUMBER:		Surf. Qual.:	-			
NORMA-Patentnummer: PATENT NUMBER:		Massstab: SCALE:	Datum/DATE	Name/NAME	Benennung: NORMAQUICK PS3 NW 20-0°	
NORMA-Patentnummer: PATENT NUMBER:		2:1	Bearb./DRAWN 18.02.00 Bauer	Bauer	-	
NORMA-Patentnummer: PATENT NUMBER:		Gepr./CHECKED -	Gepr./CHECKED -	Bahner	-	
NORMA-Patentnummer: PATENT NUMBER:		Norm	Norm	-	-	
Bandlaenge: LENGTH OF BAND:		Schutzvermerk nach ISO 16016 beachten CONSIDER AFTER PROTECTION NOTICE ISO 16016				
ZNE:		Kunde/CUSTOMER:				
Ursprung/Anfrage: ENQUIRY-NO.:		NORMA Germany GmbH Postfach 1149 • 63461 Maintal			DIN A 2	
9900021163-001		© COPYRIGHT BY NORMA Group			SHEET- SHEETS 1 1	
EAD-SYSTEM Pro/Engineer		DRAWING-NAME: 07028003020_Q			INDEX PART DWG 00 0A Q	
		SUB.F.: -			TYPE Q	
		MODEL-NAME: 07028003020			SUB.FROM: -	
		MODEL-TYP: ASSEM				