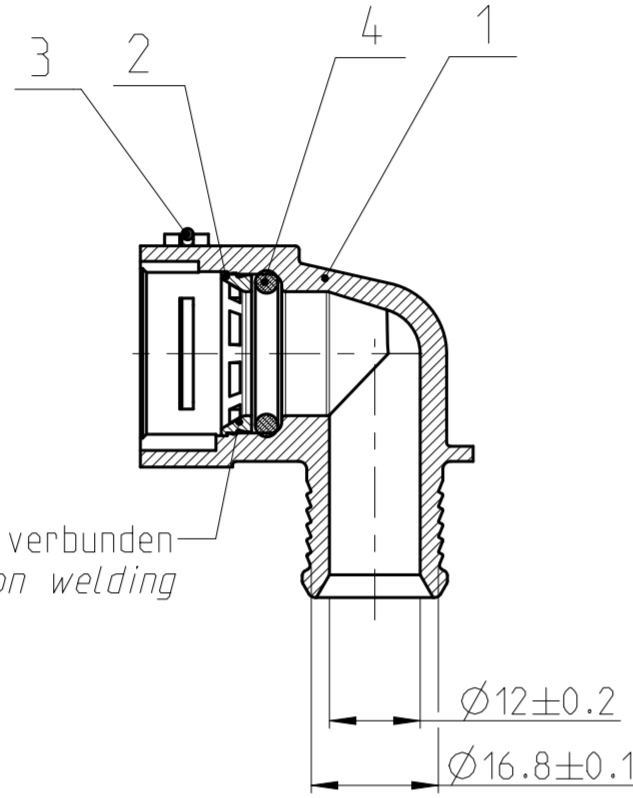


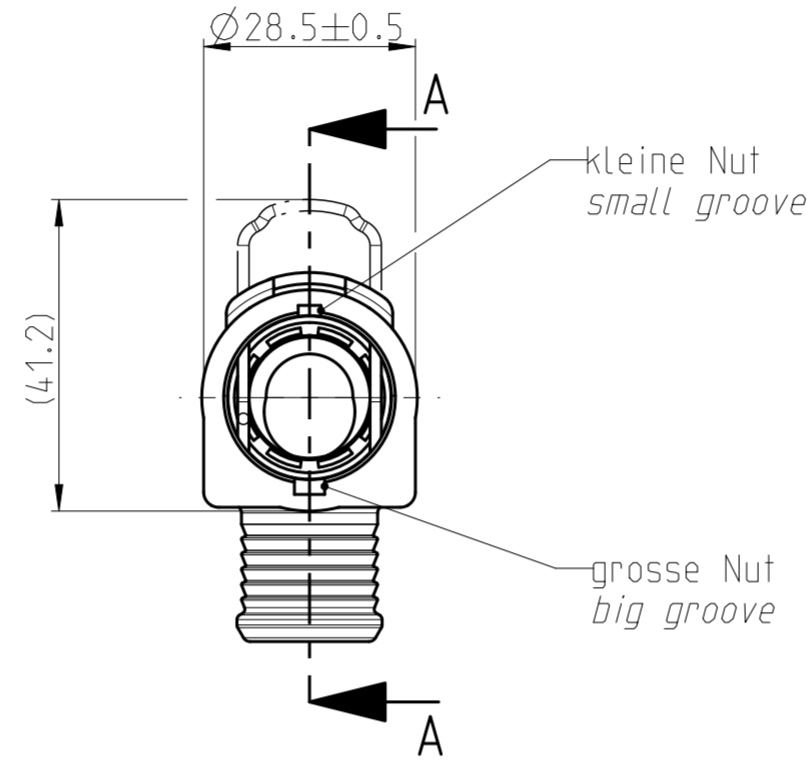
Angebotszeichnung
QUOTATION DRAWING

Teil-Nr. ITEM-NO	Stueck QTY	Benennung PART - NAME	Werkstoff MATERIAL	Oberflaeche SURFACE
1	1	Housing NW 12-90 °	PA66-GF30	black
2	1	Weld ring NW 12	PA66-GF30	black
3	1	Locking bail NW 12	EN10270-3-1.4310-NS-1.5	blank
4	1	O-RING 16.0 X 3.0	EPDM-60	black

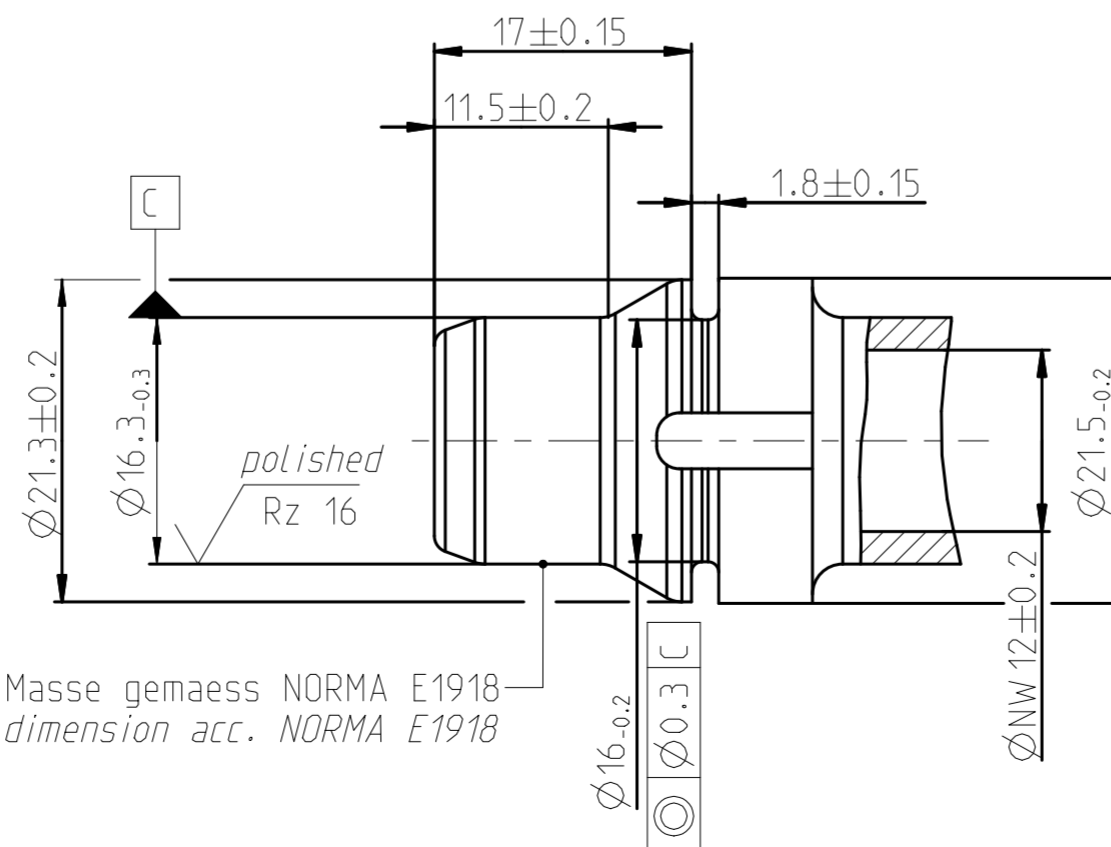
SCHNITT / SECTION A-A



Schweissring durch Reibschweissen verbunden
Weld ring connected by friction welding

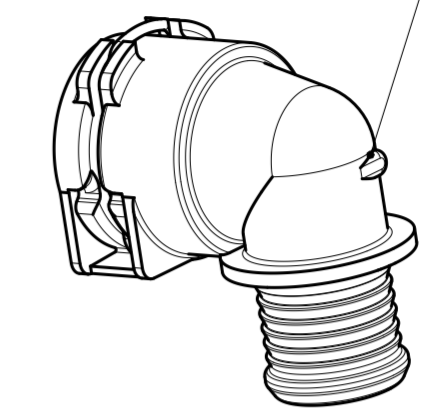


Ansicht Stutzen / View spigot
MASSSTAB / SCALE 2:1



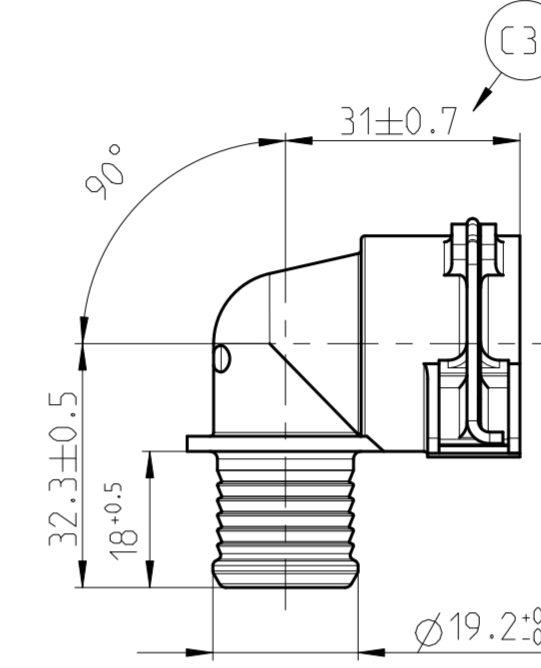
Nicht angegebene Masse gemass NORMA E1918
Not specified dimension acc. NORMA E1918

C4



Anspritzpunkt
ww. ueber oder unter
der Werkzeugtrennung
Gate mark
by choice over or under
tool separation

MASSSTAB / SCALE 1:1



Performance features for NQ PS3 - VDA	
Medium	coolant water
Operation temperature	-40°C thru 135°C, short-term up to 150°C (max. 30 min. over Lifetime)
Operation pressure	0 to 2 bar, partial pulsating (sinusoidal)

NORMAQUICK - ASSEMBLY MARKING	
Customer part-No.:	-
Trademark:	-
Manufacturer code:	NORMA-RSS
NORMA date code:	XX YY
Material code molding part:	>PA66-GF30<

-	-	-	-	-	-	-	-	-	-
-	C	6	1) Drawing separation; 2) Dimension added; 3) Dimension updated; 4) Pos.3 & Pos.4 material was DIN 2076-1.4310-1.5 & EPDM; 5) Marking table & Notes added; 6) View added;			-	2013-10-23	Tandle	Ries
-	B	1	Benennung war NW 16-90°/Part name was NW 16-90°			607178	2008-11-03	CE-SYS/SK	Bauer
-	A	1	Anspritzpunkt ggf. / Injection point added			605790	2006-08-07	SB/IC	Bauer
INDEX Teil/ PART	Zeichg DWG	Anz. QTY.	Aenderung DESCRIPTION			Aend.Nr. CHANGE-NO.	Datum DATE	Bearb. DRAWN	Gepr. CHECKED
Allgemeintoleranz: GENERAL TOLERANCE:		Form- und Lagetoleranz: FORM AND POS. TOL.:		Abmass fuer Winkel: DEVIATION FOR ANGLE:		Gewicht / WEIGHT: errechnet CALCULATED		Volumen: VOLUME:	
DIN 16901-130		DIN ISO 2768		±2°		-		- cm ³	
Projektions-Methode 1 1st ANGLE PROJECTION DIN ISO 128-30		Material: see parts list Material-No.: - Oberflaeche: see parts list SURF. QUAL.:			PART NAME: NORMAQUICK PS3 NW 12-90 °				
NORMA-Patentnummer: PATENT NUMBER:		Massstab: SCALE:		Datum/DATE		Name/NAME			
		1:1		2000-02-17		Imago-Gr Bahner			
Bandlaenge: LENGTH OF BAND:		Schutzvermerk nach ISO 16016 beachten CONSIDER AFTER PROTECTION NOTICE ISO 16016							
ZNE:		Kunde / CUSTOMER:							
Ursprung/Anfrage: ENQUIRY-No.:		9990003576		NORMA Germany GmbH Postfach 1149 • 63461 Maintal © COPYRIGHT BY NORMA Group		Zeichnungs-Nr. / DRAWING-NO.:		DIN A SHEET: SHEETS	
						0702 8008 012		2 1 1	
CAD-SYSTEM Pro/Engineer		DRAWING-NAME: 07028008012_Q		MODEL-NAME: 07028008012		INDEX PART DWG TYPE 00 0C Q			
				SUB.F.:		SUB.FROM:			
						MODEL-TYP: ASSEM			