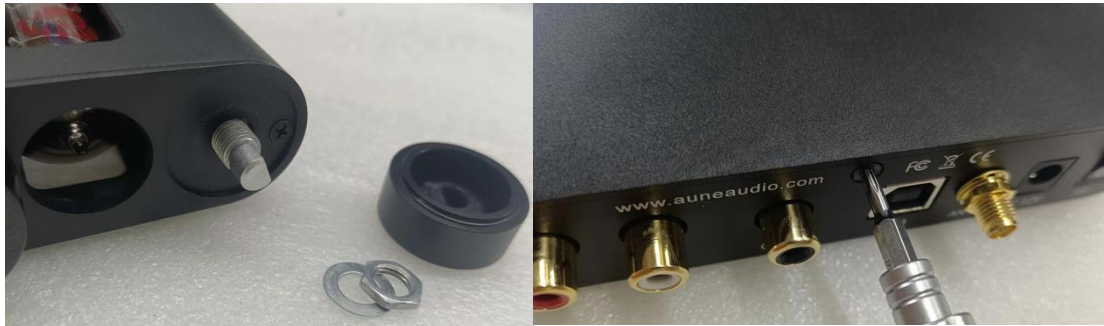


Aune Flamingo assembly and disassembly steps

一. Dismantling Steps

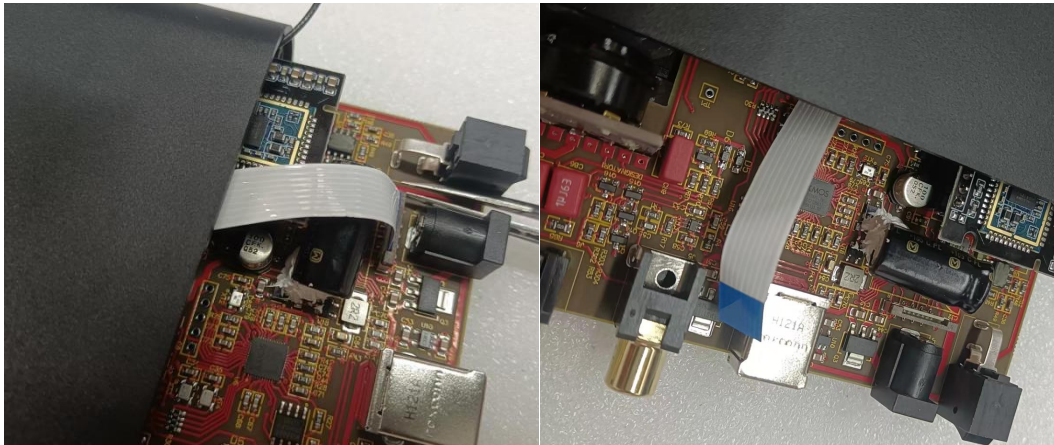
1. Pull out the knob (with a relatively tight force) and remove the nut fixing the potentiometer. The screws on the front panel do not need to be taken out. Then prepare a 2.5 Torx screw driver to remove the three screws of the rear panel.



2. Pull out the Bluetooth antenna with one hand or carefully remove the rear board with pointed tweezers. Then push the potentiometer inward with one finger and pull out 1/3 of the motherboard with the USB holder in the other hand. Do not pull out all the motherboards as it is easy to damage the cable .

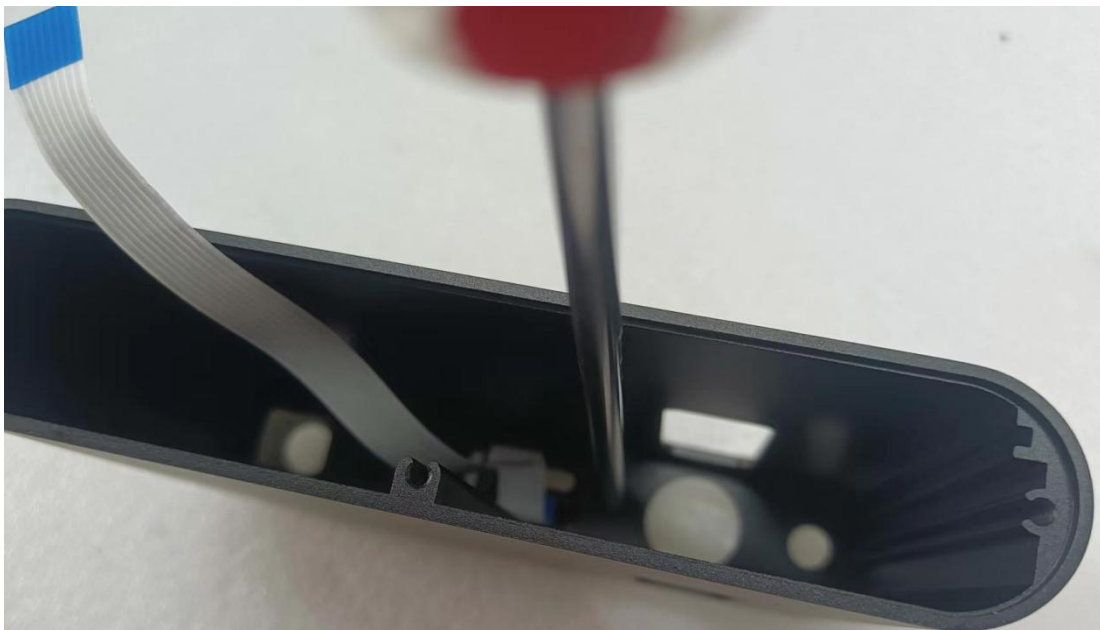


3. Use pointed tweezers to pull up the clips at both ends of the cable base, remove the cable and take out the motherboard to repair and replace the tube .

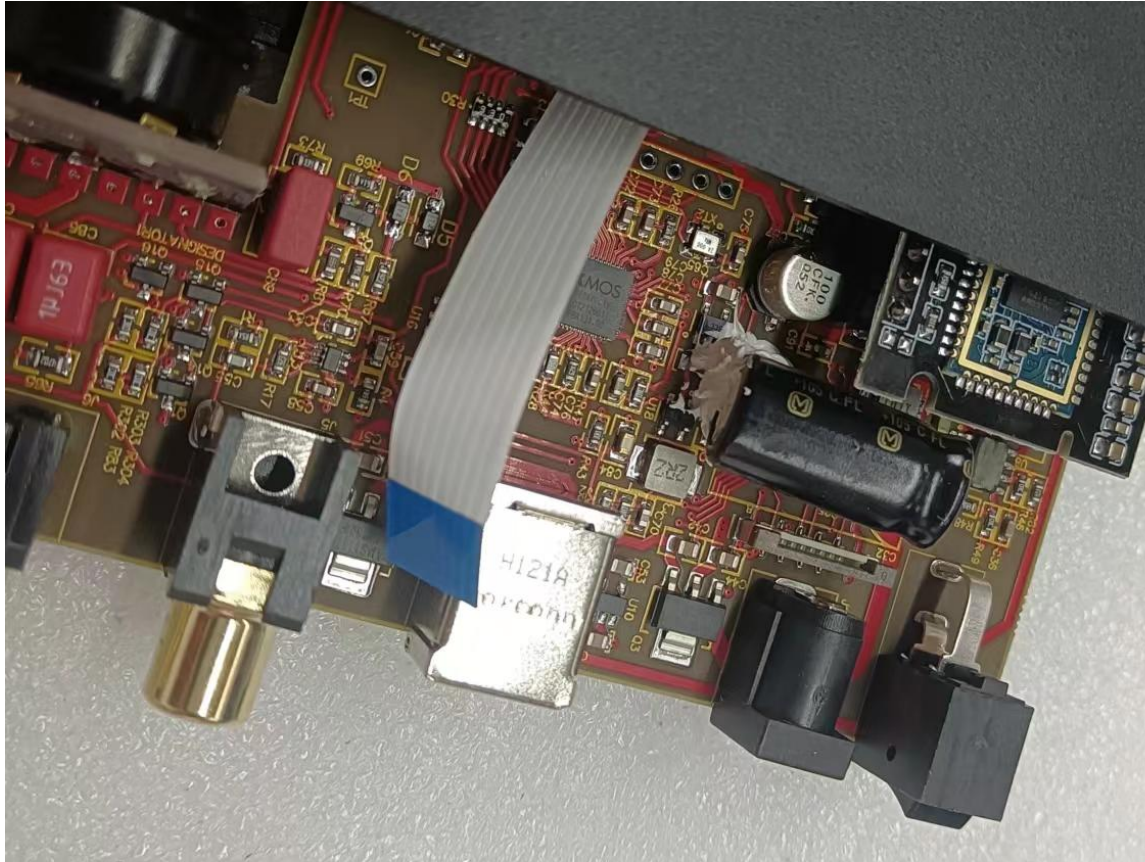


二. Assembly steps

1. When replacing the display screen and installing the acrylic panel, pay attention not to tighten the four M2 screws too tightly to avoid screw slippage. After installing the display screen, insert the cable and install the chassis . It is necessary to fix the three M2 screws reversely from the inside of the shell with a long screwdriver (because the front cover needs to be fixed in advance, the plastic surface plate can only be fixed reversely on the front cover). It is also necessary to pay attention not to clamp the cable and avoid screw slippage. Just tighten it.



2. After fixing the panel, you can insert the motherboard into the housing and plug the cable



3. Install the back cover and screws, and fix the potentiometer and knob tightly to complete the installation .



