

Assembly/operating instructions for SSC-LUXon table lamp NAMBI

1. Intended use

This product is for lighting purposes only and:

- only be installed indoors / only be operated in dry rooms, i.e. not in damp or dirty rooms and in areas of high humidity
- must not be exposed to strong mechanical loads or heavy soiling
- may not be operated after damp or dirty storage until after a condition check
- may not be changed or modified, otherwise the operating permit and conformity will expire with immediate effect!
- It is not allowed to remove the type plate!

▲ If the aforementioned points are not observed, a short circuit or electric shock may occur! **There is danger to life!**

2. General safety instructions

▲ For safe handling of the product, the user must have read and understood the installation/operating instructions completely before using the device for the first time.

▲ The product may only be used if it is alright. If the device or parts of it are defective, it must be repaired by a qualified electrician.

▲ Only use lamps/light source approved by the manufacturer. The max. lamp wattage in watts is not allowed to be exceeded.

▲ This product is not a toy and is not allowed to be stored or used within the reach of children.

▲ Safe operation of the product is only guaranteed if these instructions are followed. Therefore, keep these assembly/operating instructions. SSC-LUXon GmbH accepts no liability if the instructions given here are not followed or the lamp is subjected to improper use.

▲ Before changing the light source and / or cleaning, the light must be disconnected from the power circuit by pulling out the mains plug.

3. Assembly location

The product may only be used on a stable, tilt-resistant and level surface. Do not cover the product under any circumstances.

▲ Components of the light and especially the lamps/light source become warm during operation. Especially with halogen lamps: Keep a sufficient distance (0.5 m) from easily flammable objects (e.g. curtains, drapes, etc.) and flammable materials (ignition temperature <math>< 250^{\circ}\text{C}</math>!).

4. Operation, bulb replacement, faults & disorders

▲ **Caution:** Disconnect the connecting cable from the power supply before replacing lamps/light sources!

Do not cover! There is a risk of fire when covering (e.g. with towel)!

▲ Never look directly into the light source!

What to do in case of error?

In case of an error, the device must be switched off immediately. The product may only be operated if it works correctly. The device may only be put back into operation after it has been checked by a qualified electrician! This is the case if:

1. there is visible damage, 2. the product is not working correctly, 3. there is smoke, steam, or audible crackling noises, 4. overheating can be detected

▲ **Caution:** There is a danger to life - repairs to the product or work on parts carrying mains voltage may only be carried out by qualified electricians.

5. Cleaning & care instructions

The product may only be wiped dry or carefully with a slightly damp and lint-free cloth. The product is not allowed to be removed for this purpose. Do not use abrasive or sharp objects or aggressive cleaning agents. Do not use solvents.

Technical data

Type:	Table lamp	Socket:	E27
Model:	NAMBI black or white	Max. power:	60 W
Protection type:	IP20	Operating temperature:	-5°C - +40°C
Voltage:	230 V AC 50/60 Hz	Protection class:	II
Diameter:	Ø 80 mm	Height:	55 mm
Material:	Aluminium	Colour:	Black or white

Assembly instructions – NAMBI

NAMBI



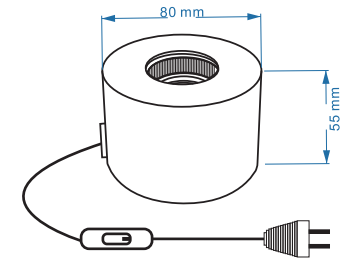
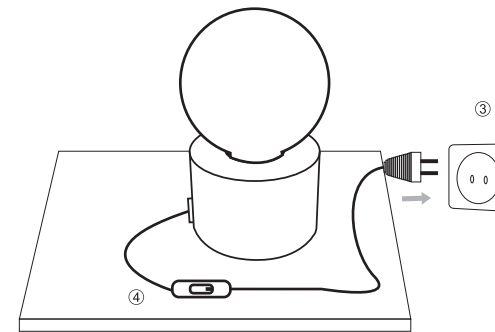
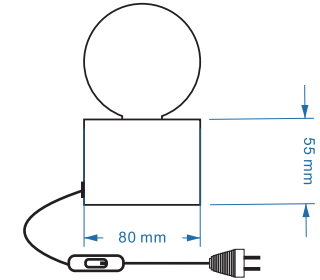
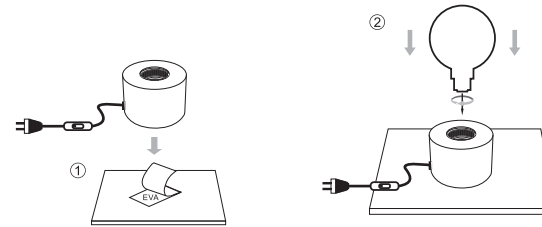
1. Place the luminaire in a suitable location (Fig.1).

2. Screw the bulb into the socket of the light (Fig.2).



3. Connect the power cable (Euro plug type-C) to your power socket (Abb.3).

4. Press the switch to turn on the light. When using smart lighting, please follow the separate steps in the operating instructions for the light source.



Notes / Explanations & Legend

The following applies to all models

Disconnect the device from the mains power before starting any work

Protection class II

Installation only by qualified electrician

Distance to illuminated objects min. 0.5m

Can only be used indoors.

Notes on use indoors & outdoors

▲ **Protection type IP2X:** Use only indoors and dry, i.e. do not operate in damp or dirt-prone rooms and in areas of high humidity.

▲ **Protection type IP4X & IP6X:** Can be used indoors and outdoors.

Onlineshop:
www.led-lichtraum.de

Satisfied with your product?
Then we look forward to your product review in our online store, on Amazon or eBay!

Disposal instructions

Make sure to dispose packaging in accordance with the applicable guidelines of your local authority. Devices marked with the crossed-out waste garbage do not belong in the household waste! You are obliged to hand

in these devices at one of the free collection points in your municipality. You can obtain more information from your local authority, the relevant town hall or a local or regional waste disposal company.

▲ **Keep packaging material and small parts away from children and animals. Danger of suffocation!**