

## Operating instructions for the SSC-LUXon LUNORIS Universal Rotary Dimmer

The LUNORIS dimmer is a device for controlling the brightness of LED lights, halogen lights powered by electronic transformers, and incandescent bulbs. The dimmer allows you to adjust the brightness of the lighting.

### 1. Intended use

This product is intended solely for lighting control purposes and must: - be installed indoors only - be operated only in dry rooms, i.e. not in damp or dirty rooms or in areas with high humidity - must not be subjected to heavy mechanical stress or heavy soiling - must only be operated following a condition check if it has been stored in damp or soiling conditions - must not be altered or modified; otherwise, the operating licence and conformity will lapse with immediate effect! The type plate must not be removed.

▲ Failure to comply with the above points may result in a short circuit or electric shock!  
**This is a life-threatening situation!**

### 2. General safety instructions

- ▲ The entire installation must only be carried out by an authorised electrician who is familiar with the applicable guidelines. Hereinafter referred to as the 'electrician'.
- ▲ To ensure the product is used safely, the user must have read and understood the assembly and operating instructions in full before using the appliance for the first time.
- ▲ The product must only be used if it is in good working order. If the appliance or any of its parts are faulty, it must be repaired by a qualified electrician.
- ▲ This product is not a toy and must not be stored or used within reach of children.
- ▲ Safe operation of the product can only be guaranteed if these instructions are followed. You should therefore keep these installation and operating instructions in a safe place. SSC-LUXon GmbH accepts no liability if the instructions set out here are not followed or if the dimmer is used incorrectly.

### 3. Installation & Configuration

- ▲ Warning: Ensure the connection cable is de-energised before starting work (switch off the main switch/fuse)!
- ▲ Only use parts that are supplied with the product or are clearly labelled as accessories! Otherwise, the product may not be sufficiently safe!
- ▲ The wiring diagrams shown in the illustrations are for illustrative purposes only and are greatly simplified. They do not in any way constitute a recommendation for connection! Connection must only be carried out by a qualified electrician.
- ▲ When drilling, take care to avoid cables, gas pipes and water pipes.

### 4. Operation, Faults & Malfunctions

▲ Warning: Risk of death! Repairs to the product or work on live parts must only be carried out by qualified electricians!

In the event of a fault, switch off the appliance immediately. The product must only be used if it is in perfect working order. It must only be put back into operation after it has been checked by a qualified electrician! This applies if: - there is visible damage - the product is not working properly - it is emitting smoke or steam, or making audible crackling noises - signs of overheating are evident


▲ **Thermal overload protection / overheating:** Operation at elevated temperatures or voltages may cause the thermal protection circuit to trip. In this case, reduce the connected load to prevent the circuit from becoming overloaded again.

▲ **Built-in short-circuit protection:** Once the short-circuit protection has been activated, the dimmer will stop operating for approximately 5 seconds and then switch back on. If a persistent short circuit or overcurrent is detected, the dimmer will stop operating until the power supply to the dimmer is disconnected and the dimmer is reset to normal operation. In this case, please have the circuit checked by a qualified electrician.

### 5. Cleaning and Care Instructions




The product should only be wiped gently with a dry cloth or a slightly damp, lint-free cloth. Do not use abrasive or sharp objects, or harsh cleaning agents. Do not use solvents.

## Technical Specifications: LUNORIS Universal Rotary Dimmer

 For indoor use only	<b>Typ:</b>	Universal rotary dimmer
	<b>Model:</b>	LUNORIS
	<b>Voltage:</b>	220-240 V AC - 50 Hz
	<b>Protection type:</b>	IP20
	<b>Material:</b>	Steel / Plastic
	<b>Max. load:</b>	Halogen: 5-300 W - LED: 5-250 W (max. 25 Stück)
	<b>Connection cable:</b>	Max. 1,5 mm <sup>2</sup>
	<b>Dimmer Mode:</b>	Phase-segment control (Trailing Edge)
	<b>Protection class:</b>	II
	<b>Dimensions BxHxT:</b>	70 x 70 x 25 mm
	<b>Installation in a flush-mounted box:</b>	Ø 60mm
	<b>Colour:</b>	Silver

## Notes / Explanations & Key

### Important information


-  Disconnect the appliance from the mains before carrying out
-  Protection class II
-  Installation must be carried out by an authorised electrician

### Guidance on indoor and outdoor use

▲ **Protection class IP2x** - For indoor use only in dry conditions; therefore, not in damp rooms, rooms prone to dirt, or areas with high humidity


▲ **Protection class IP4x & IP6x** - Can be used indoors and outdoors

### Disposal instructions

 Please ensure that you dispose of packaging in accordance with your local authority's current guidelines, in a manner that is both safe and environmentally sound. Appliances marked with the crossed-out wheellie bin symbol must not be put in the household waste! You are obliged to hand these appliances in at one of the free collection points in your local area.

▲ **Keep packaging materials and small parts well out of the reach of children and pets. Risk of suffocation!**

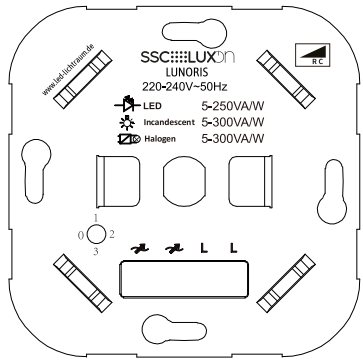
 Onlineshop:  
[www.led-lichtraum.de](http://www.led-lichtraum.de)

 **Satisfied with your product??**  
We look forward to your product review in our online shop, on Amazon or eBay!

## Installation instructions for the SSC-LUXon LUNORIS rotary dimmer

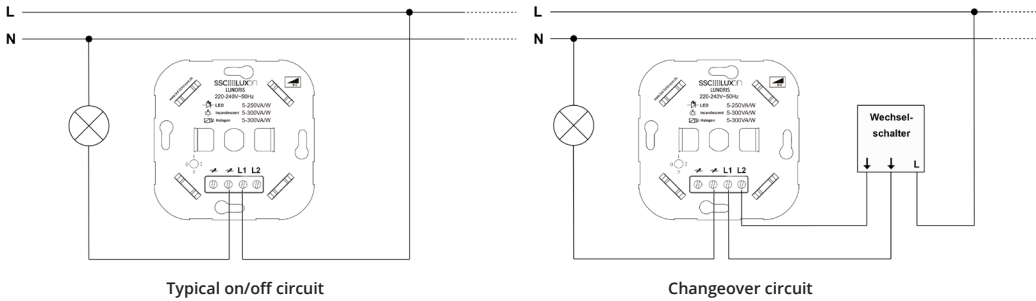
Suitable for **phase-cut dimming**. Minimum load: 5W capacitive or resistive load, such as dimmable LED lighting, incandescent bulbs and halogen lighting.

### Installation steps



1. The supply cable must be disconnected from the mains before work begins.
2. Connect the dimmer in accordance with the wiring diagram.  
Important: The wiring must only be carried out by a qualified electrician..
3. Fit the dimmer switch into the flush-mounted box and tighten the screws - suitable for installation boxes with a diameter of 60 mm.
4. Reattach the switch plate to the wall and fit the dimmer knob onto the shaft.
5. Switch the power back on. Press ON and use the rotary knob to adjust the brightness.

### Wiring diagram



### Compatibility & Compatible Loads

Phase section - This mode is set as the factory default



Dimmable LED bulbs with a compatible electronic ballast

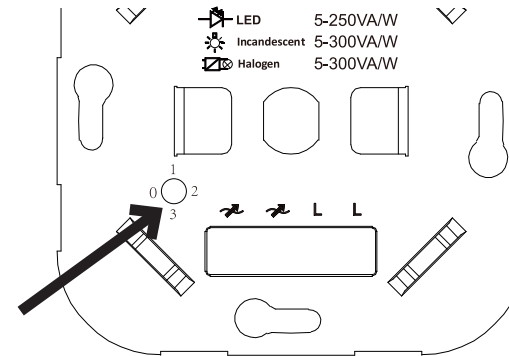


Standard filament bulbs or high-voltage halogen bulbs



Low-voltage halogen lamps with electronic ballasts

### Configuration - Setting the minimum brightness



1. Remove the front cover from your switch series.
2. Switch on the connected light by pressing the control button once.
3. Now adjust the minimum brightness by turning the small brightness control knob with a flat-bladed screwdriver:
  - Level 0: Minimum brightness
  - Levels 1-2: Increase of approximately 25-30% each
  - Level 3: Maximum brightness

**▲ Tip:** If your LED light flickers or goes out completely at low dimming levels, increase the minimum brightness by raising the setting to ensure an even light output.

### How to use the dimmer switch

#### Switching on/off:

Press the centre of the rotary control once to switch the light on or off.

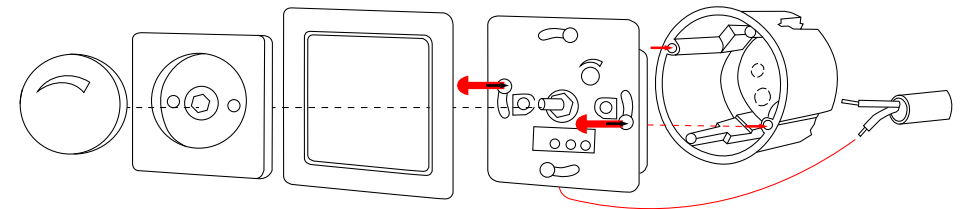
#### Adjusting the brightness:

Turn the central axis clockwise to increase the brightness. Turn it anti-clockwise to decrease the brightness.

The dimming is continuous and adjusts directly to your desired light level.

### Note on compatibility

Suitable for installation in standard flush-mounted and cavity wall boxes with an internal diameter of at least 60 mm.



### Important information



Disconnect the appliance from the mains before carrying out any work



Protection class II



Installation must be carried out by an authorised electrician only



Vers. 02/2026

### Guidance on indoor and outdoor use

**▲ IP2x protection rating** - The device is for indoor use only and must be operated in dry conditions; it must not be used in damp rooms, rooms prone to soiling, or areas with high humidity

**▲ Protection class IP4x & IP6x** - Can be used indoors and outdoors



Onlineshop:  
[www.led-lichtraum.de](http://www.led-lichtraum.de)



**Satisfied with your product?**  
We look forward to your product review in our online shop, on Amazon or eBay!

**SSC-LUXon**

SSC-LUXon GmbH - Am Krozinger Weg 4, 79189 Bad Krozingen, Germany  
E-Mail: [service@ssc-luxon.de](mailto:service@ssc-luxon.de); Tel.: +49 7633 - 988 3000