

User manual for the SSC-LUXon Smart WIFI rotary dimmer ZENALUX

The ZENALUX dimmer is a versatile device for continuously adjusting brightness – suitable for LED bulbs, halogen bulbs with electronic ballasts and incandescent bulbs. It can be easily integrated into existing smart home systems and controlled via Wi-Fi (Tuya protocol).

1. Intended use

This product is intended solely for lighting control purposes and must: - be installed indoors only - be operated only in dry rooms, i.e. not in damp or dirty rooms or in areas with high humidity - must not be subjected to heavy mechanical stress or heavy soiling - must only be operated following a condition check if it has been stored in damp or soiling conditions - must not be altered or modified; otherwise, the operating licence and conformity will lapse with immediate effect! The type plate must not be removed.

▲ Failure to comply with the above points may result in a short circuit or electric shock!

This is a life-threatening situation!

2. General safety instructions

▲ The entire installation must only be carried out by an authorised electrician who is familiar with the applicable guidelines. Hereinafter referred to as the 'electrician'.

▲ To ensure the product is used safely, the user must have read and understood the assembly and operating instructions in full before using the appliance for the first time.

▲ The product must only be used if it is in good working order. If the appliance or any of its parts are faulty, it must be repaired by a qualified electrician.

▲ This product is not a toy and must not be stored or used within reach of children.

▲ Safe operation of the product can only be guaranteed if these instructions are followed. You should therefore keep these installation and operating instructions in a safe place. SSC-LUXon GmbH accepts no liability if the instructions set out here are not followed or if the dimmer is used incorrectly.

3. Installation & Configuration

▲ **Warning:** Ensure the connection cable is de-energised before starting work (switch off the main switch/fuse)!

▲ Only use parts that are supplied with the product or are clearly labelled as accessories! Otherwise, the product may not be sufficiently safe!

▲ The wiring diagrams shown in the illustrations are for illustrative purposes only and are greatly simplified. They do not in any way constitute a recommendation for connection! Connection must only be carried out by a qualified electrician.

▲ When drilling, take care to avoid cables, gas pipes and water pipes.

4. Operation, Faults & Malfunctions

▲ **Warning:** Risk of death! Repairs to the product or work on live parts must only be carried out by qualified electricians!

In the event of a fault, switch off the appliance immediately. The product must only be used if it is in perfect working order. It must only be put back into operation after it has been checked by a qualified electrician! This applies if: - there is visible damage - the product is not working properly - it is emitting smoke or steam, or making audible crackling noises - signs of overheating are evident

▲ **Thermal overload protection / overheating:** Operation at elevated temperatures or voltages may cause the thermal protection circuit to trip. In this case, reduce the connected load to prevent the circuit from becoming overloaded again.

▲ **Built-in short-circuit protection:** Once the short-circuit protection has been activated, the dimmer will stop operating for approximately 5 seconds and then switch back on. If a persistent short circuit or overcurrent is detected, the dimmer will stop operating until the power supply to the dimmer is disconnected and the dimmer is reset to normal operation. In this case, please have the circuit checked by a qualified electrician.

5. Cleaning and Care Instructions

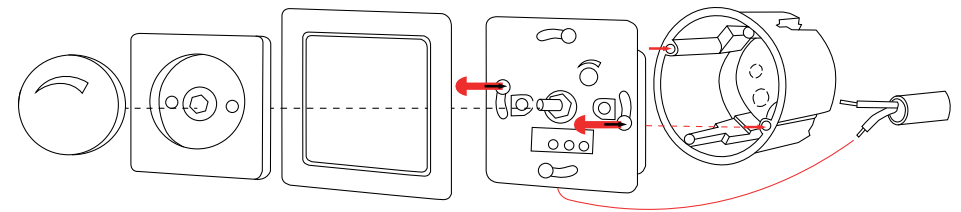
The product should only be wiped gently with a dry cloth or a slightly damp, lint-free cloth. Do not use abrasive or sharp objects, or harsh cleaning agents. Do not use solvents.

Technical Specifications: ZENALUX Universal Rotary Dimmer

For indoor use only	Type:	Smart Rotary Dimmer / WIFI
	Model:	ZENALUX
	Voltage:	220-240 V AC - 50 Hz
	Protection type:	IP20
	Material:	Steel / Plastic
	Max. Load:	Halogen: 5-250 W - LED: 10-150 W (max. 25 pieces)
	Connection cable:	Max. 1,5 mm ²
	Dimmer Mode:	Phase cut-off / Phase cut-on (switchable via a switch)
	Protection class:	II
	Dimensions BxHxT:	70 x 70 x 25 mm
Installation in a flush-mounted box: Ø 60mm		
Colour:	Silver	

Note on compatibility

Suitable for installation in standard flush-mounted and cavity wall boxes with an internal diameter of at least 60 mm.



How to use the dimmer switch

Switching on/off: Press the centre of the rotary control once to switch the light on or off.

Adjusting the brightness: Turn the central shaft clockwise to increase the brightness. Turn it anti-clockwise to decrease the brightness. The dimming is continuous and adjusts instantly to your desired light level.

Brief Declaration of Conformity / Frequency Band and Transmission Power

SSC-LUXon GmbH hereby declares that the 'Tuya Smart WiFi' radio equipment type complies with Directive 2014/53/EU. The full text of the EU Declaration of Conformity can be found at www.led-lichtraum.de/info/doc. Frequency band in which the radio equipment operates: 2.412 – 2.472 GHz, Max. transmit power: +17 dBm.



→ Manuel d'instructions en français



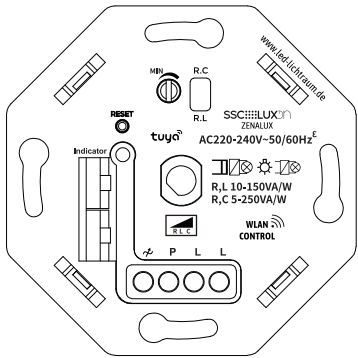
SCAN ME

www.led-lichtraum.de/manuals

Installation instructions for the SSC-LUXon rotary dimmer ZENALUX

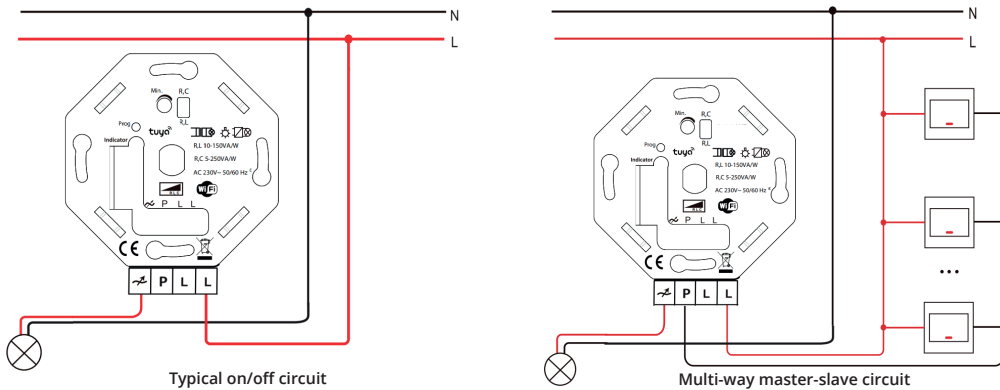
Suitable for phase-cut or phase-lead control. Minimum load: 5-10 W capacitive or resistive load, such as dimmable LED lighting, incandescent bulbs and halogen lighting.

Installation - Installation steps

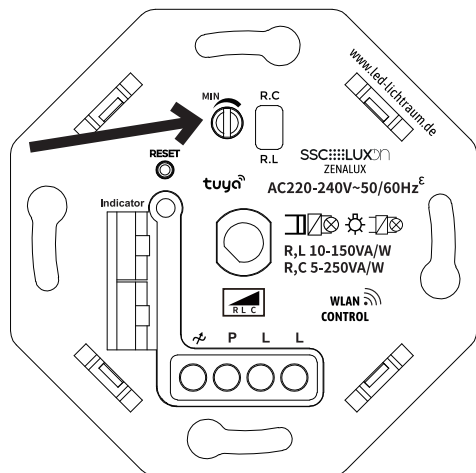


1. The supply cable must be disconnected from the mains before work begins.
2. Connect the dimmer in accordance with the wiring diagram.
3. Insert the dimmer into the flush-mounted box and tighten the screws – Suitable for installation boxes with a diameter of 60 mm.
4. Reattach the switch plate to the wall and fit the dimmer knob onto the shaft.
5. Switch the power back on. Press ON and use the rotary knob to adjust the brightness.

Installation - Wiring diagram



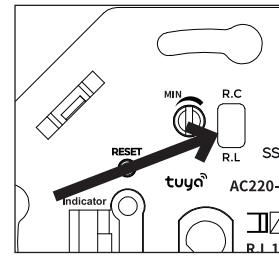
Configuration - Setting the minimum brightness



1. Remove the front cover from your switch series.
2. Switch on the connected light by pressing the control button once.
3. Now adjust the minimum brightness by turning the small brightness control knob with a flat-bladed screwdriver

▲ **Tip:** If your LED light flickers or goes out completely when dimmed to a low level, increase the minimum brightness by raising the setting to ensure an even light output.

Note on setting the dimming behaviour – phase cut-off or phase cut-on



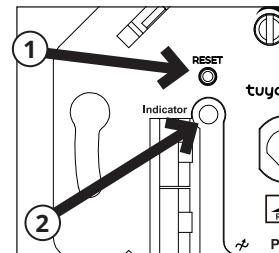
The ZENALUX dimmer has a small slide switch on the front panel that allows you to switch between leading-edge and trailing-edge dimming. This setting is important as different light sources require different dimming technologies:

Phase control (R.L) It is particularly suitable for conventional light sources such as incandescent and halogen bulbs with a standard transformer.

Phase section (R.C) is generally better suited to modern LED bulbs with electronic ballasts. This allows you to achieve a more even, silent dimming performance.

▲ **Please note:** If the wrong mode is selected, this may cause flickering or humming. You should therefore check which mode is suitable for your bulbs before connecting them, and set the switch accordingly. LED bulbs should generally always be set to R.C mode!

Settings: Wi-Fi & Tuya Smart (Pairing Mode)



Required: Smart Life app (Android or Apple)

To use the 'smart' function of the dimmer, you will need the Smart Life app.

▲ You can find detailed information on installing, setting up and using the app at: www.led-lichtraum.de/guide/smart

Quick Start Guide:

1. Download the 'Smart Life' app from the App Store or Google Play.
2. Sign up using your mobile number or email address. If you already have an account, log in using your mobile number or email address and your password.
3. Make sure that the device is within range of your Wi-Fi network and that the blue LED is flashing rapidly. If this is not the case, please press and hold the reset button (1) for approximately 5 seconds until the blue LED (2) starts flashing rapidly.
4. Tap the "+" icon in the top right-hand corner of the Smart Life app. The device is usually detected automatically – simply follow the on-screen instructions. If the device does not appear, select the "Lighting" category and then "Light source (Wi-Fi)".
5. Once the device has been found, enter your Wi-Fi password to connect.
6. Once pairing is complete, the device will appear in the app. You can now connect it to Amazon Alexa or Google Assistant to control it using voice commands, or control the device via your Smart Life app. For more information on setting it up with smart speakers, please visit www.led-lichtraum.de/guide/smart

Important information

- Disconnect the appliance from the mains before carrying out any work
- Protection class II
- Installation must be carried out by an authorised electrician only
- Vers. 02/2026
- Onlineshop: www.led-lichtraum.de

Guidance on indoor and outdoor use

▲ **IP2x protection rating** - For indoor use only and in dry conditions; must not be used in damp rooms, rooms prone to dirt, or areas with high humidity

▲ **Protection class IP4x & IP6x** - Can be used indoors and outdoors

★ Satisfied with your product? We look forward to reading your product review in our online shop, on Amazon or on eBay!



SSC:LUXon

SSC-LUXon GmbH – Am Krozinger Weg 4, 79189 Bad Krozingen, Germany
E-Mail: service@ssc-luxon.de; Tel.: +49 7633 - 988 3000