

## Assembly/operating instructions for linovum wall light assortment SCARA

### 1. Intended use

This product is for lighting purposes only and:

- can be installed indoors and outdoors - protection type IP54
- not be subjected to strong mechanical loads
- may not be operated after damp or dirty storage until after a condition check
- may not be changed or modified, otherwise the operating permit and conformity will expire with immediate effect!
- It is not allowed to remove the type plate.

▲ If the aforementioned points are not observed, a short circuit or electric shock may occur! **There is danger to life!**

### 2. General safety instructions

- ▲ The complete installation may only be carried out by an authorized electrician who is familiar with the applicable guidelines. Hereinafter referred to as „qualified electrician“.
- ▲ For safe handling of the product, the user must have read and understood the installation/operating instructions completely before using the device for the first time.
- ▲ The product may only be used if it is alright. If the device or parts of it are defective, it must be repaired by a qualified electrician.
- ▲ Only use lamps/light sources approved by the manufacturer. The max. lamp wattage in watts is not allowed be exceeded.
- ▲ This product is not a toy and is not allowed be stored or used within the reach of children. Never point the light beam at people or animals (face/eyes).
- ▲ Safe operation of the product is only guaranteed if these instructions are followed. Therefore, keep these assembly/operating instructions. linovum GmbH accepts no liability if the instructions given here are not followed or the lamp is subjected to improper use.

### 3. Assembly & configuration

▲ **Caution:** The connecting cable must be disconnected from the power supply before starting work (switch off the main switch/fuse)! Only use parts which are supplied with the product or which are clearly marked as equipment! Otherwise the product may not be sufficiently safe!

- ▲ The connection has to be carried out by a qualified electrician only.
- ▲ When drilling, pay attention to cables and gas and water lines.
- ▲ Always route the cable so that it does not touch the light.

#### 3.1 Assembly location

The product is suitable for mounting indoors & outdoors. The product may only be mounted on stable and tilt-resistant walls. Do not cover the product under any circumstances, especially not with insulating material, fire hazard!

### 4. Operation, bulb replacement, faults & disorders

▲ Never look directly into the light source!

#### What to do in case of error?

In case of an error, the device must be switched off immediately. The product may only be operated if it works correctly. The device may only be put back into operation after it has been checked by a qualified electrician! This is the case if:

- ▲ there is visible damage,
- ▲ the product is not working correctly,
- ▲ there is smoke, steam, or audible crackling noises,
- ▲ overheating can be detected.

▲ **Caution:** There is a danger to life - repairs to the product or work on parts carrying mains voltage may only be carried out by qualified electricians.

#### Avoidance of disturbances and fire hazards:

It is not allowed to cover the product under any circumstances. Air circulation must be ensured. Nothing may be attached or hung on the product, especially no decoration.

### 5. Cleaning & care instructions

The product may only be wiped dry or carefully with a slightly damp and lint-free cloth. Do not use abrasive or sharp objects or aggressive cleaning agents. Do not use solvents.

#### Technical data 840001031 / 840001032



Can be used  
indoors and  
outdoors

Type:	Recessed wall light
Model:	840001032 (angular) / 840001031 (round)
Protection type:	IP54
Voltage:	230 V AC
Material:	Aluminium & plastic
Light source:	Permanently installed
Power:	3 W
Colour of light:	Warm white
Protection class:	I
Luminous flux:	70 lumen
Lifetime:	25.000 hours / >15.000 switching cycles
Measurements:	80 x 80 mm (angular) / Front panel: Ø 80 mm (round)
Installation depth:	Without box: 70 mm - with box: 85 mm
Cutout:	Ø 74 mm

#### Technical data 840001033



Can be used  
indoors and  
outdoors

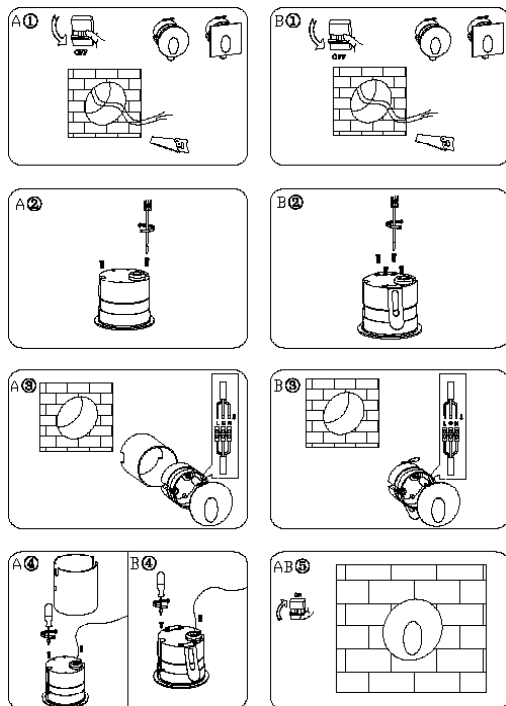
Type:	Wall-mounted light
Model:	840001033
Protection type:	IP54
Voltage:	230 V AC
Material:	Aluminium & plastic
Light source:	Permanently installed
Power:	3,3 W
Colour of light:	Warm white (3000 Kelvin)
Protection class:	I
Luminous flux:	90 lumen
Lifetime:	25.000 hours / >15.000 switching cycles
Measurements:	H 100 x B 110 x T 45 mm

#### Technical data 840001034 / 840001035



Can be used  
indoors and  
outdoors

Type:	Wall-mounted light
Model:	840001035 (angular) / 840001034 (round)
Protection type:	IP54
Voltage:	230 V AC
Material:	Aluminium & plastic
Light source:	Permanently installed
Power:	4,5 W
Colour of light:	Warm white (3000 Kelvin)
Protection class:	I
Luminous flux:	120 lumen
Lifetime:	25.000 hours / >15.000 switching cycles
Measurements:	106 x 106 x 24 mm (angular) / Front panel: Ø 110 x 22 mm (round)

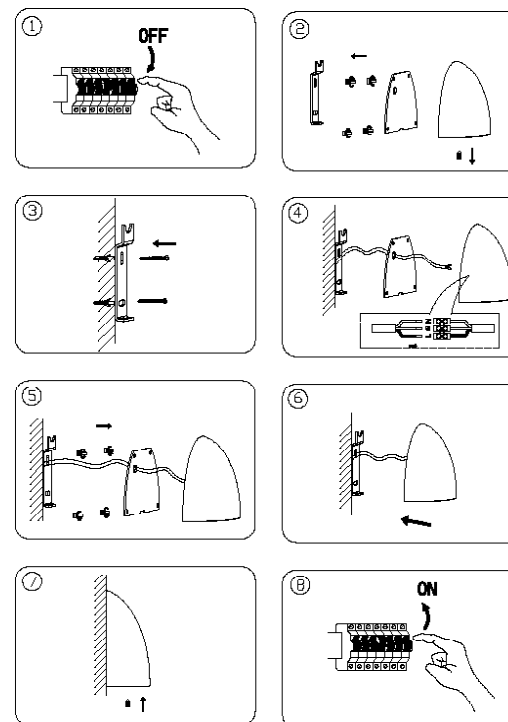


### Variant with built-in box

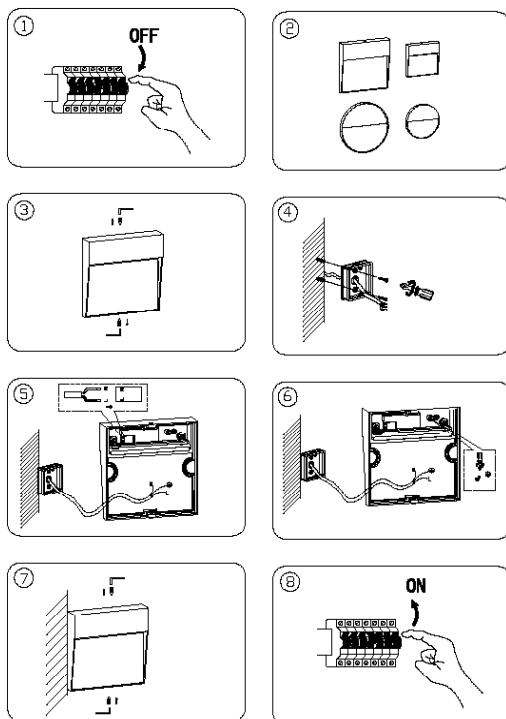
1. Disconnect the connection cable from the power supply. **Fig. A1**
2. Cutout according to table Technical data cutting / drilling.
3. Remove the screws from the cover on the back. **Fig. A2**
4. Guide the connection cable through the rubber opening.
5. Connect the connecting cable to the light. **Fig. A3**
6. Refit the cover to the enclosure using the screws. **Fig. A4**
7. Fix the box in the wall.
8. Plug the light into the socket on the wall.
9. Switching the connection line to voltage. **Fig. AB5**
10. The product is now ready for use.

### Variant without built-in box

1. Disconnect the connection cable from the power supply. **Fig. B1**
2. Cutout according to table Technical data cutting / drilling.
3. Remove the screws from the cover on the back. **Fig. B2**
4. Guide the connection cable through the rubber opening.
5. Connect the connecting cable to the light. **Fig. B3**
6. Refit the cover and springs to the enclosure using the screws. **Fig. B4**
7. Plug the light into the wall.
8. Switching the connection line to voltage. **Fig. AB5**
9. The product is now ready for use.



1. Disconnect the connection cable from the power supply. **Fig. 1**
2. Loosen the small screw on the underside (be careful not to unscrew it completely). **Fig. 2**
3. Lever out the wall bracket.
4. Remove the four screws on the back. **Fig. 2**
5. Fix the wall bracket to the wall with screws and, if necessary, dowels. **Fig. 3**
6. Guide the connecting cable through the rubber opening. **Fig. 4**
7. Connect the connecting cable to the light. **Fig. 3**
8. Refit the cover to the enclosure using the four screws. **Fig. 5**
9. Place the light on the wall bracket. Tip: Insert the top first and then the bottom. **Fig. 6**
10. Tighten the small screw on the underside again. **Fig. 7**
11. Switching the connection line to voltage. **Fig. 8**
12. The product is now ready for use.



1. Disconnect the connection cable from the power supply. **Fig. 1**
2. Remove the screws from the cover. **Fig. 3**
3. Guide the connection cable through the opening. **Fig. 4**
4. Screw the wall bracket to the wall. **Fig. 4**
5. Connect the connecting cable to the light. **Fig. 5**
6. Connect the earth cable to the enclosure. **Fig. 6**
7. Refit the cover to the enclosure using the screws. **Fig. 7**
8. Switching the connection line to voltage.
9. The product is now ready for use.

### Notes / Explanations & Legend

#### Important information



Disconnect the device from the mains power before starting any work



Protection class II



Installation only by qualified electrician



Vers. 08/2020

#### Notes on use indoors & outdoors

▲ **Protection type IP20 & IP23** - Use only indoors and dry, i.e. do not operate in damp or dirt-prone rooms and in areas of high humidity.

▲ **Protection type IP44 & IP6x** - Can be used indoors and outdoors.



Web:  
**www.linovum.de**



**Satisfied with your product?**  
Then we look forward to your product review in our online store, on Amazon or eBay!

#### Disposal instructions



Make sure to dispose packaging in accordance with the applicable guidelines of your local authority. Devices marked with the crossed-out waste garbage do not belong in the household waste! You are obliged to hand

in these devices at one of the free collection points in your municipality. You can obtain more information from your local authority, the relevant town hall or a local or regional waste disposal company.

▲ **Keep packaging material and small parts away from children and animals. Danger of suffocation!**