



REAR VIEW CAMERA **PROFI HD**

USER MANUAL



DIRECTLY TO THE SHOP
VIA QR CODE

VEGA SOLUTIONS GMBH
BELGISCHE ALLEE 51A
53842 TROISDORF - GERMANY
INFO@VSG24.COM | WWW.VSG24.COM

START	3
YOUR PROFI HD CAMERA	4
GENERAL NOTES & INFORMATION.....	5
CONNECTIVITY OPTIONS	6
FUNCTION & INSTALLATION.....	7-8
SPECIFICATIONS	9
SAFETY INSTRUCTIONS.....	10

Dear Customer,

Thank you for choosing the Profi HD rear view camera from VSG24.com! For optimal performance and safety, please read this user manual carefully before using the device, and keep it in a safe place for future reference. Be sure to follow all safety instructions and warnings associated with this device! The illustrations shown in this manual are intended solely to help explain the various settings of your device. This manual is designed to give you a quick and easy introduction to using the product.

If you have any further questions, please feel free to contact us either by phone at **+49 2241/2008040** or by email at **info@vsg24.com**.

Or by post at:

Vega Solutions GmbH - Belgische Allee 51A - 53842 Troisdorf - Germany

We hope you enjoy using your new device!

Your VSG24.com Team



DIRECTLY TO THE SHOP
VIA QR CODE

VEGA SOLUTIONS GMBH
BELGISCHE ALLEE 51A
53842 TROISDORF - GERMANY
INFO@VSG24.COM | WWW.VSG24.COM

Profi HD - high-resolution rear view camera

With Full HD 1080P resolution, a wide 130° viewing angle and reliable night vision technology, this camera provides safe and convenient support when reversing. Thanks to its robust metal housing, integrated heating function and high IP69 protection class, it is also ideal for use in demanding weather conditions.

Please read this operating manual carefully to ensure correct installation and optimal use of all functions. We hope you enjoy your new product and wish you safe travels!



DIRECTLY TO THE SHOP
VIA QR CODE

VEGA SOLUTIONS GMBH
BELGISCHE ALLEE 51A
53842 TROISDORF - GERMANY
INFO@VSG24.COM | WWW.VSG24.COM

Cleaning the device:

Before cleaning, always disconnect the device from the power source by unplugging it or switching off the power. As the housing is mostly made of plastic, please do not use liquid cleaners, sprays or chemical cleaning agents such as benzene. These can damage the material.

RECOMMENDED CLEANING METHODS:

Light soiling: Simply wipe the device with a soft, dry cloth.

For more stubborn dirt: Use a slightly damp cloth with a mild, neutral cleaning solution. Then wipe with a dry cloth.

Important: Only clean the exterior surface of the device. Opening the housing is strictly prohibited, as life-threatening voltages may be present inside the device! Use standard lens cleaning cloths to remove fingerprints, and for particularly stubborn dirt, special lens cleaning agents may be used.

Maintenance

Never attempt to service the device yourself by opening or removing the housing. Improper tampering with the device can compromise its electrical safety. Leave all repairs to qualified personnel. Damage caused by improper tampering will void the warranty. Unauthorised opening and repair will also void the warranty!

Further information

Do not operate the device if condensation has formed inside it. Under no circumstances should the rear view camera be cleaned with a high-pressure cleaner. Car washes should also be avoided. In both cases, excessive force is exerted on the seals. Switch off the device immediately if you notice any smell or smoke and consult a specialist dealer.



DIRECTLY TO THE SHOP
VIA QR CODE

VEGA SOLUTIONS GMBH
BELGISCHE ALLEE 51A
53842 TROISDORF - GERMANY
INFO@VSG24.COM | WWW.VSG24.COM



Figure 1



Figure 2

Your Profi HD camera can be connected to the rear view monitor via its 4-pin quick release connector, which also supplies it with power. Alternatively, the camera can be connected to your car radio using the adapter cable provided.

* When connecting the PROFI HD rear view camera to a car radio via the cinch adapter, please note that the car radio must be capable of feeding in external HD signals.

Commissioning the Camera

The rear-view camera is designed for a variable voltage range of 12 to 24 volts. This makes it suitable for use in passenger cars with a 12-volt electrical system as well as trucks operating on 24 volts. A minimum supply voltage of 12 volts and 1 ampere must be provided.

Power Supply of the Camera

The VSG24 rear-view camera can be conveniently and easily connected to the rear-view monitor (Figure 1). For this purpose, the camera is equipped with a waterproof 4-pin quick-release connector. This connector is compatible with all VSG24 rear-view monitors.

To connect, simply plug the 4-pin cable from the camera into the corresponding camera input on the monitor. Make sure that the arrows printed on the cables are aligned and that the connection is made without significant resistance. This ensures that the pins are correctly aligned with the socket. You can then secure the connection further using the locking screw. Additionally, the set includes an adapter cable for all rear-view cameras with a Cinch connector (Figure 2).

You have the option of connecting the camera either to terminal 15 (ignition) for continuous operation or to the reverse light. Connecting it to the reverse light ensures the camera is only active when the reverse gear is engaged.

Mounting the Camera

The camera should be securely mounted to the vehicle to ensure a stable and reliable position. Use the provided screws and mounting brackets for installation. Make sure the camera is correctly aligned to optimize the viewing angle and to prevent it from shifting during vibrations.

For weatherproof sealing, a small tube of sealing compound is included in the set. Apply it around the mounting holes or the mounting area to reliably prevent moisture from entering.

Activating or Deactivating the Mirror Function

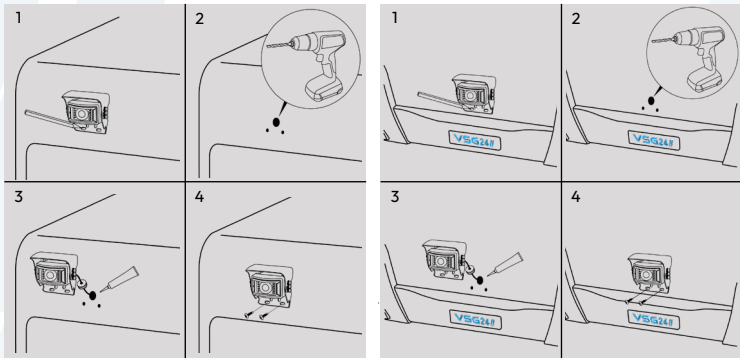
The camera is equipped with an „IMAGE CONTROL“ jumper to control image mirroring.

- For use as a **rear-view camera**: Leave the cap on – the image will be mirrored.
- For use as a **front or side camera**: Remove the cap – the image will not be mirrored.



- 130° viewing angle
- Night vision function with 9 IR LEDs
- IP69K protection rating
- Continuously adjustable viewing angle

- Glare protection against sunlight
- 1080P HD resolution
- Designed for continuous operation
- Microphone for audio playback

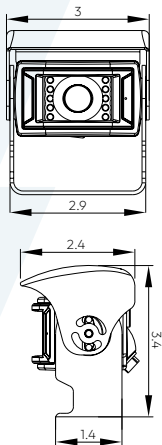


1. First, decide where you want to mount the rear view camera (e.g. under the roof edge or above the number plate) and mark the position of the screw holes.
2. Drill screw holes and the hole for the cable according to your markings.
3. Feed the camera cable through the drilled hole into the vehicle interior. In addition to the rubber seal, use the supplied sealant to seal the drill hole.
4. Screw the camera into the drilled holes using the screws provided.



DIRECTLY TO THE SHOP
VIA QR CODE

VEGA SOLUTIONS GMBH
BELGISCHE ALLEE 51A
53842 TROISDORF - GERMANY
INFO@VSG24.COM | WWW.VSG24.COM



Technical specifications	Details
Protection class	IP69K
Viewing angle	130°
Audio	Microphone
Night vision function	9 infrared LEDs
Resolution	HD-1080P
Mirroring	Adjustable
Connection	4-pin
TV system	PAL
Power supply	DC 12V-24V
Operating temperature	-20°C to + 70°C
Heating function	Automatic <5°C



DIRECTLY TO THE SHOP
VIA QR CODE

VEGA SOLUTIONS GMBH
BELGISCHE ALLEE 51A
53842 TROISDORF - GERMANY
INFO@VSG24.COM | WWW.VSG24.COM

⚠ Warning notice – Sealant

Safety instructions for using the sealant

The sealant is only suitable for sealing in vehicles. Do not use it on sensitive materials or in areas that come into direct contact with food.

Danger to eyes and health!

Wear protective gloves when using the product if possible.

In case of contact with eyes, rinse immediately with clean water and consult a doctor.

⚠ Important safety instructions:

- **Only use the sealant in well-ventilated areas.**
- **Avoid contact with eyes and skin.**
- **If skin irritation (redness, etc.) occurs due to skin contact, consult a doctor.**
- **In case of contact with eyes, rinse thoroughly and, if necessary, consult a doctor**
- **Keep away from children.**



DIRECTLY TO THE SHOP
VIA QR CODE

VEGA SOLUTIONS GMBH
BELGISCHE ALLEE 51A
53842 TROISDORF – GERMANY
INFO@VSG24.COM | WWW.VSG24.COM

VSG24//[®]



VSG24//[®]

DIRECTLY TO THE SHOP
VIA QR CODE



SERVICE

PROMISE

GUARANTEED