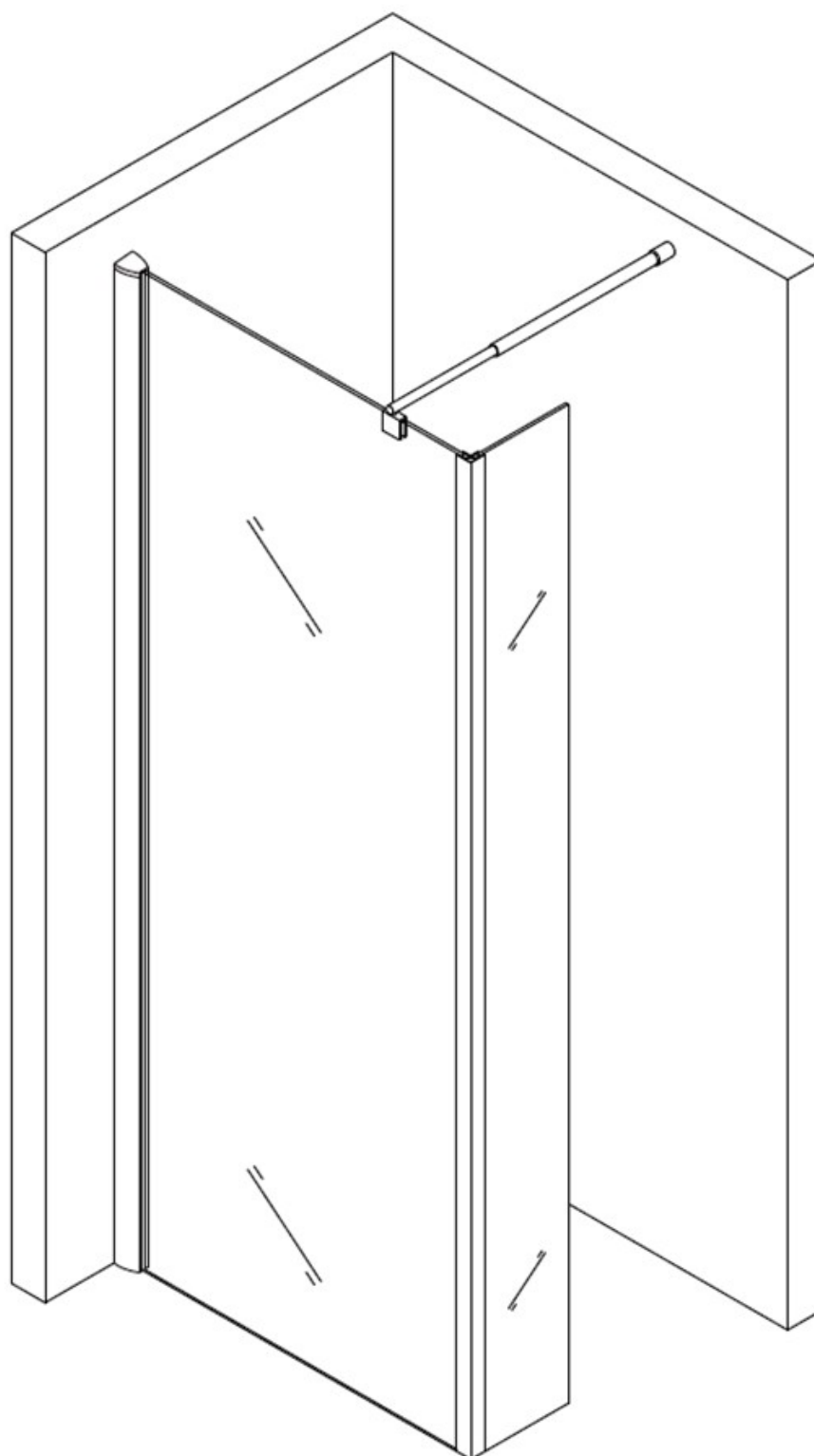


# SHOWER CABIN EX106

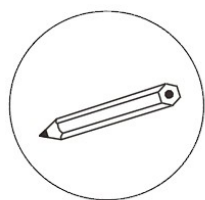
**BERNSTEIN**  
Living with Style



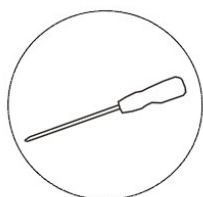
## ASSEMBLY INSTRUCTIONS

Septembre 2017

## TOOLS REQUIRED



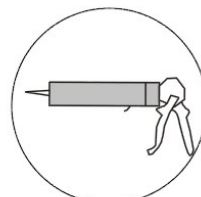
PENCIL



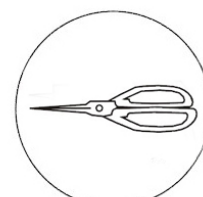
SCREWDRIVER



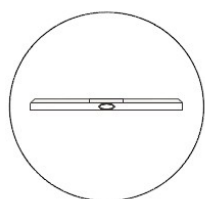
POWER DRILL



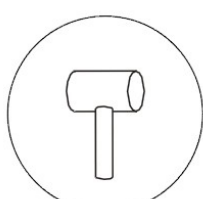
SILICONE SEALANT



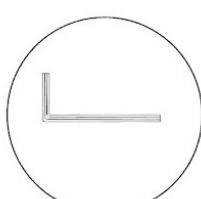
SCISSORS



SPRIT LEVEL



RUBBER Mallet

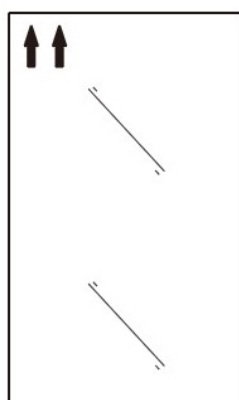


HEX SCREWDRIVER  
(INCLUDED IN DELIVERY)

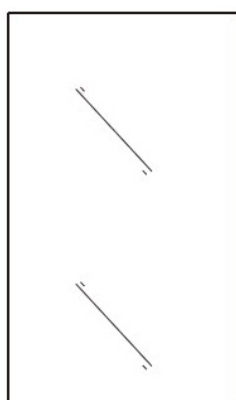


TAPE MEASURE

## WARNING



Upward arrow



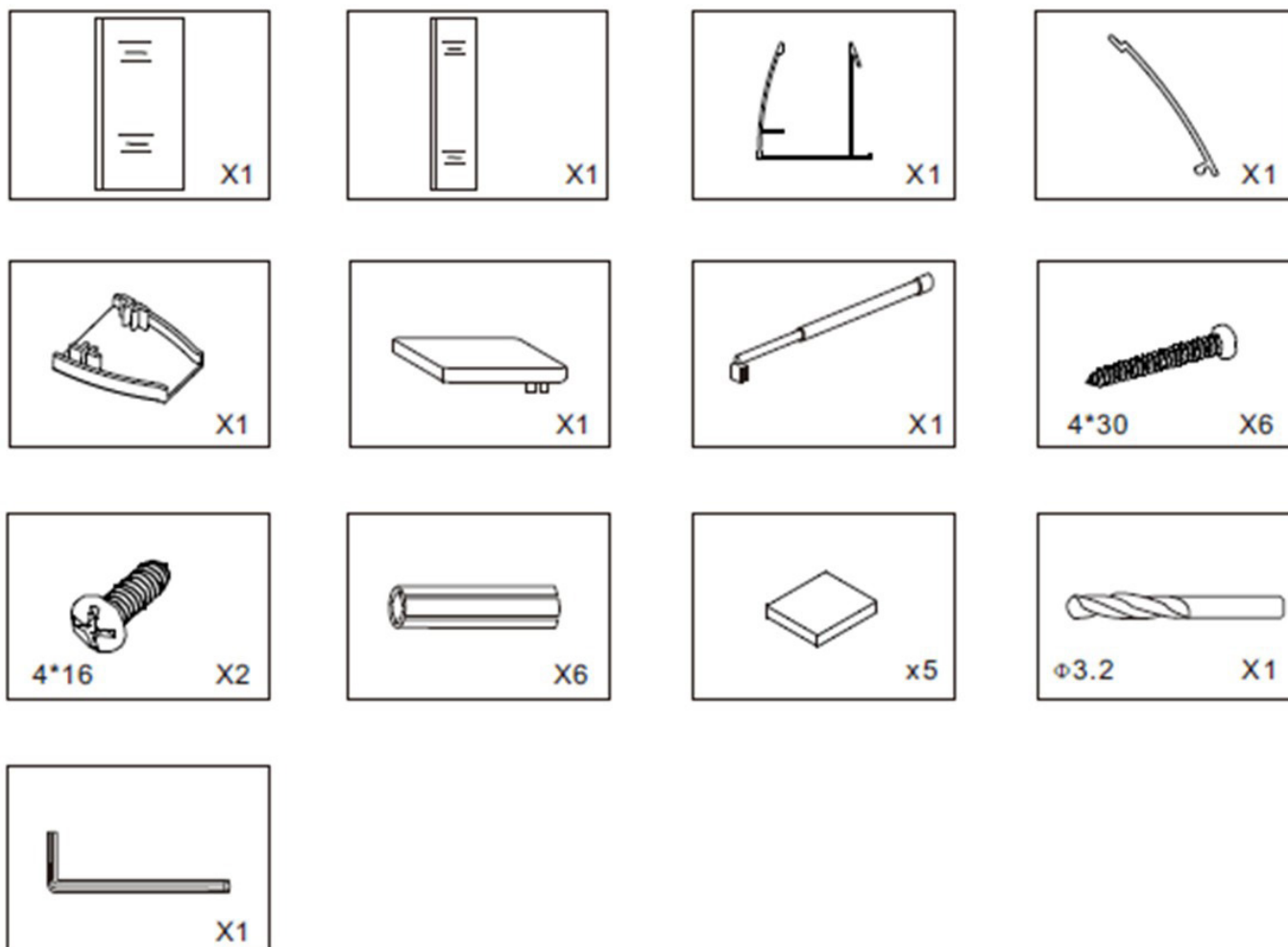
No arrow

Usable on both sides

Please read carefully the following dimensions:

Dimensions of the cabin	Segment A page 4
30x200cm	850-1400mm

## INCLUDED IN THE DELIVERY

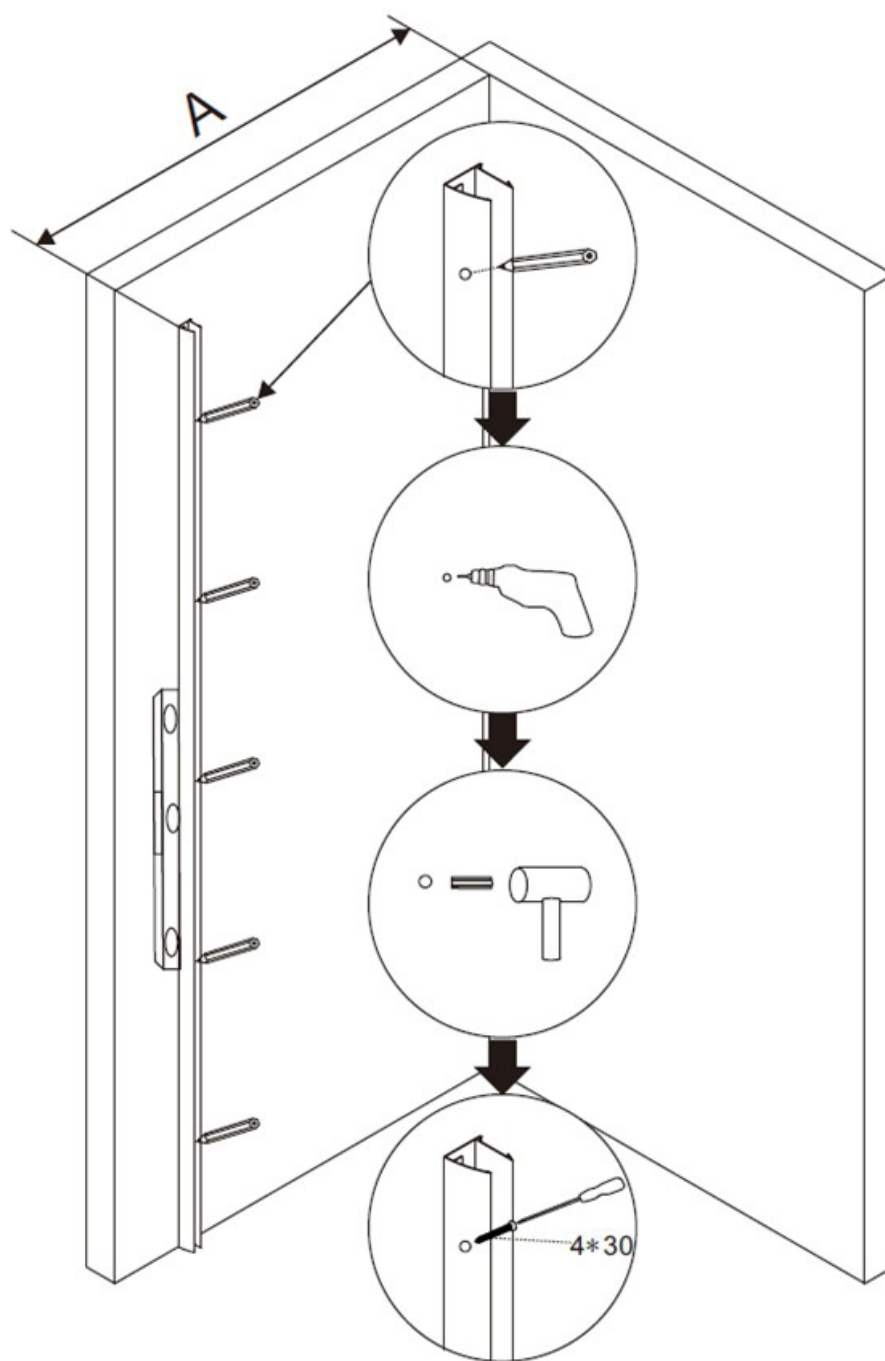


Warning: Please fix the screws on the surface of the glass manually, without borer.

Wall profiles should be arranged 15 mm to the external border of the shower tray, or according to the approximate value of the segment A (see image page 4)

## Shower enclosure EX106

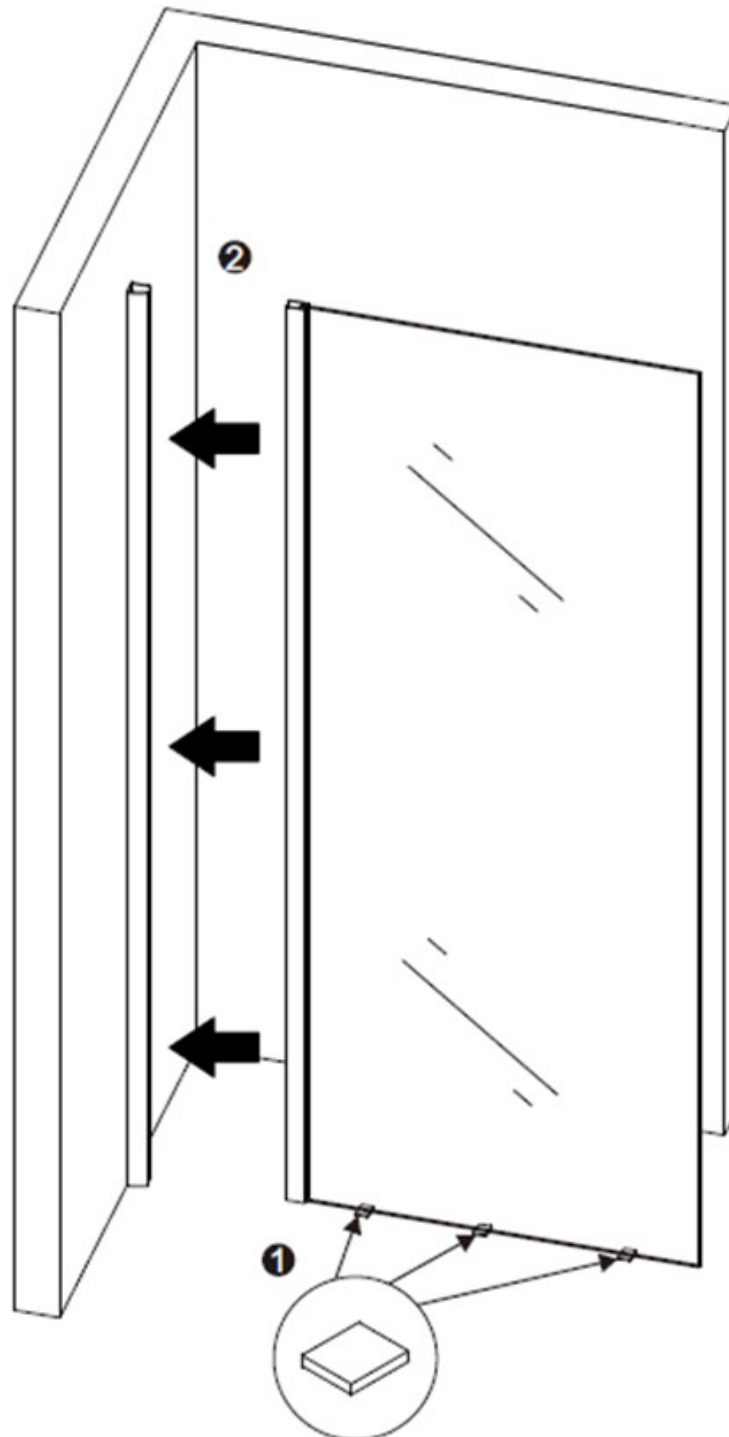
1. Place the shower tray by means of a spirit level (see image below).
2. Arrange the profiles (see image). Mark holes position with the pencil.
3. Drill the holes.
4. Fix the profiles by means of wall plugs. Please use wall plugs compatible with your wall.



1. Put the rubber seals under the fixed glass panel. This operation is aimed to reduce the pressure on the glass.
2. Insert the fixed panel in the aluminium profile.

**Warning:**

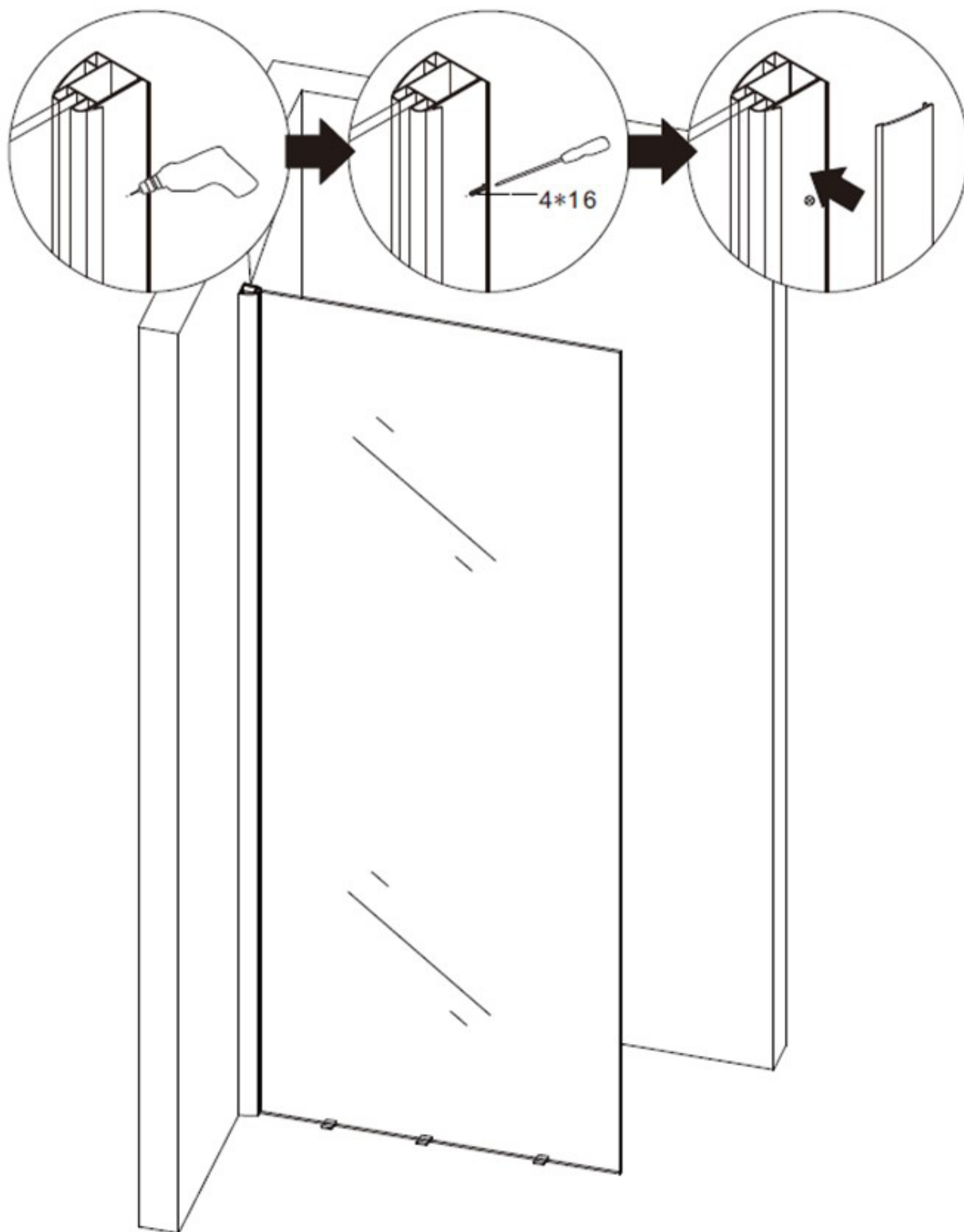
The panel presents internal special NANO glass coating, the external part is marked by a label.



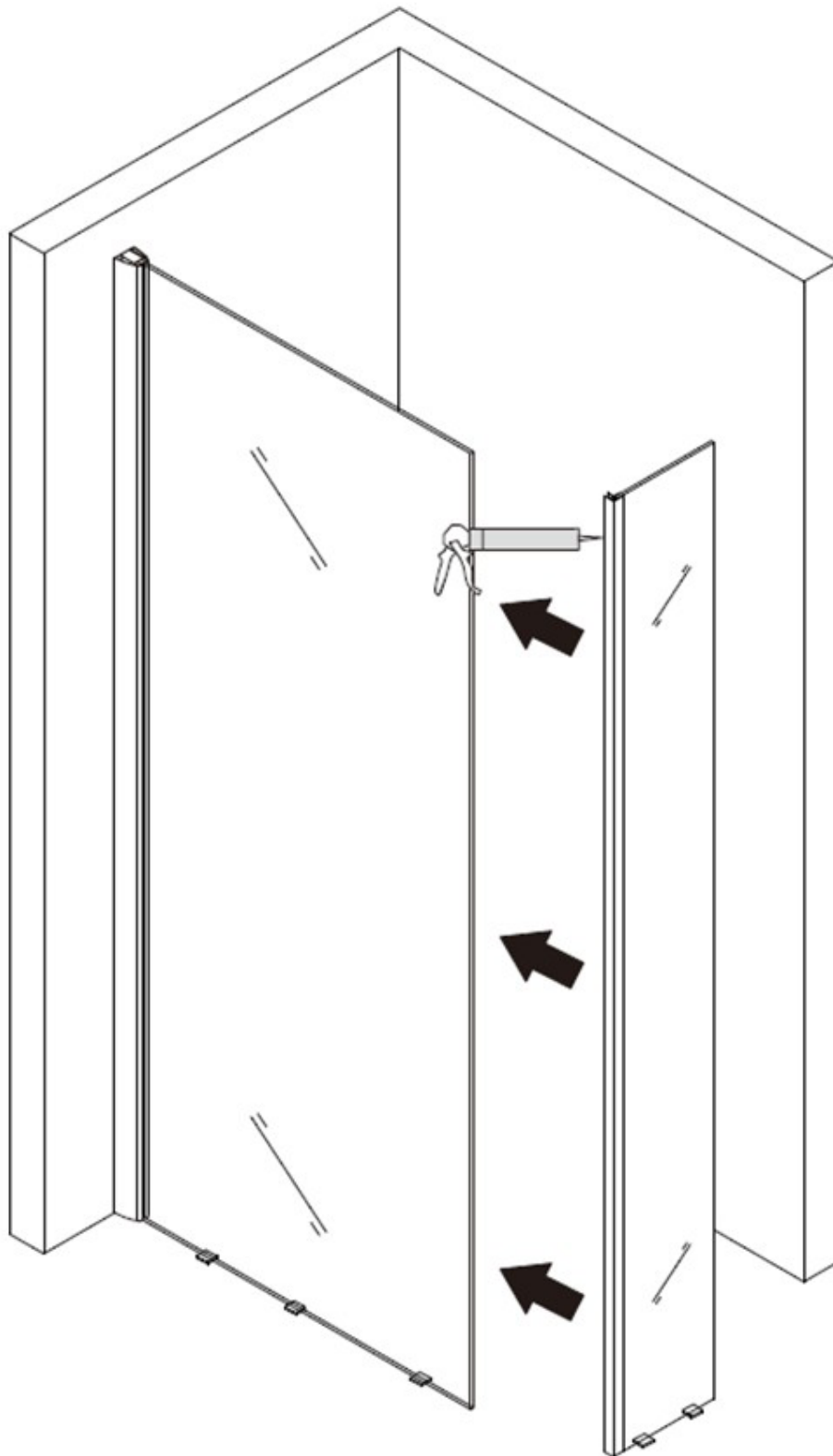
## Shower enclosure EX106

Please treat carefully the glass element, in order not to damage its surface.

1. Screw the fix panel to the aluminum profiles (see image), and place the cover on the top.

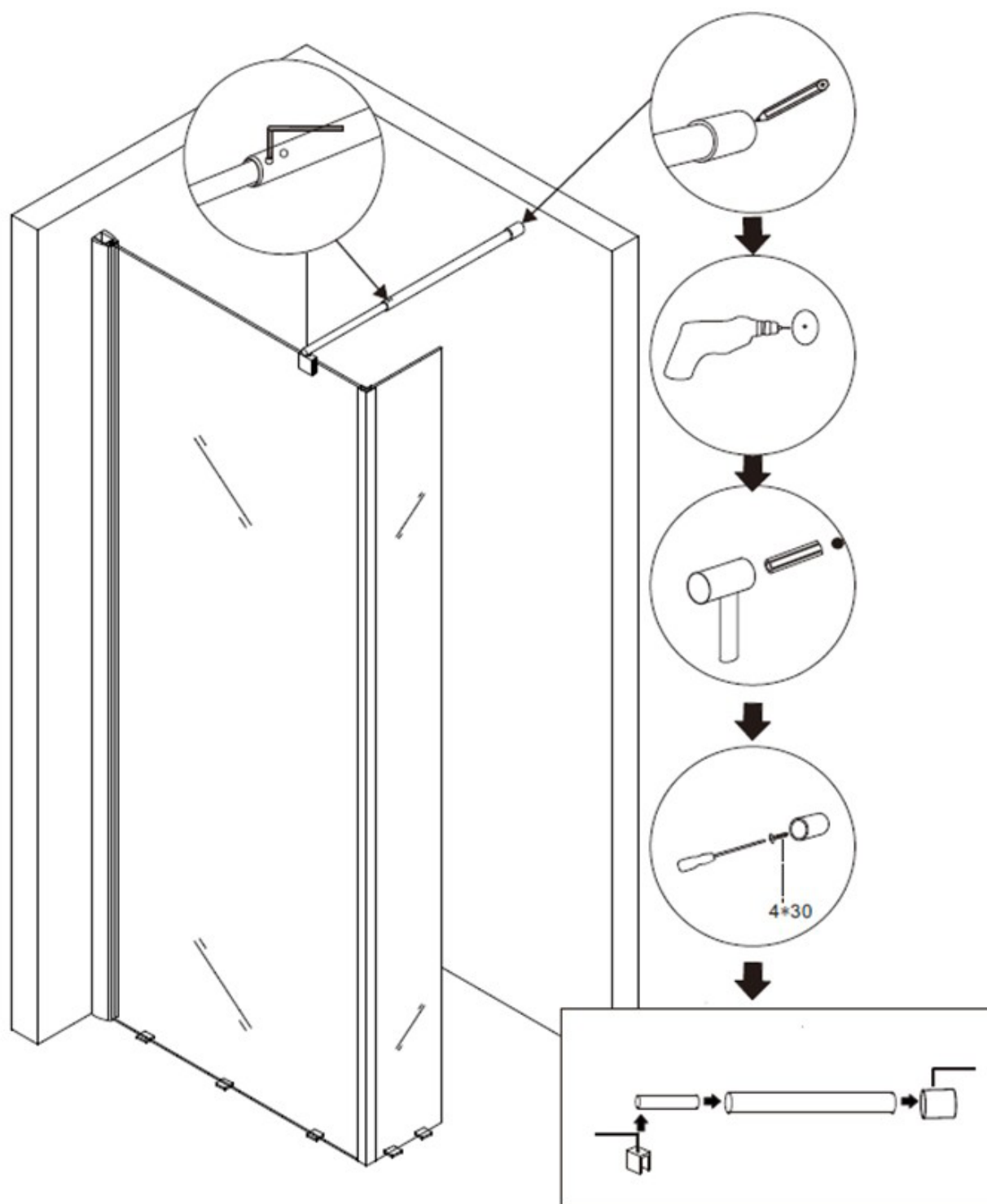


1. Apply silicone on the corner profile, bordering the glass elements.



## Shower enclosure EX106

1. Place the support bar between the wall and the glass and screw it (see images).



1. Place the cover on the top of the aluminum profile and apply silicone sealant to the panel.

