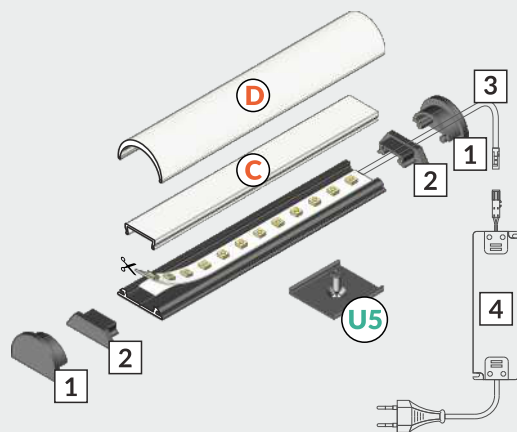
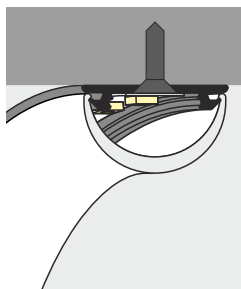
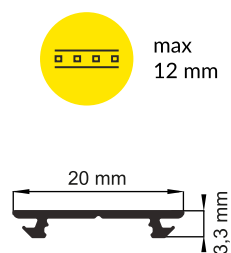


PO CD/U5

SPECIAL APPLICATION PROFILE



- D** D slide cover
- C** C click cover
- U5** cone U5 mounting plate



pliers



hacksaw



soldering iron



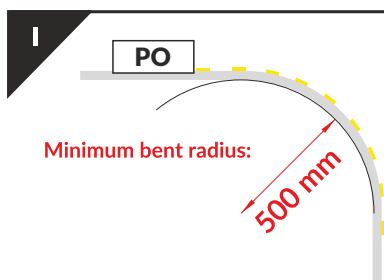
solder



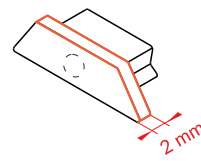
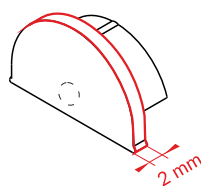
drill



screwdriver



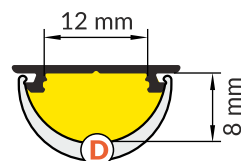
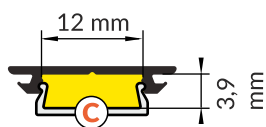
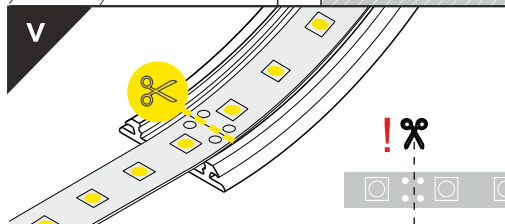
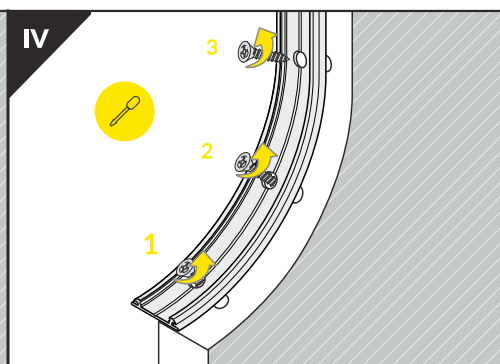
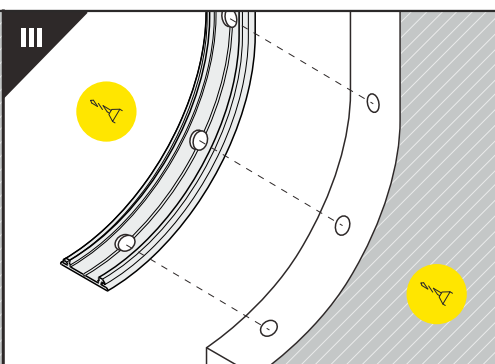
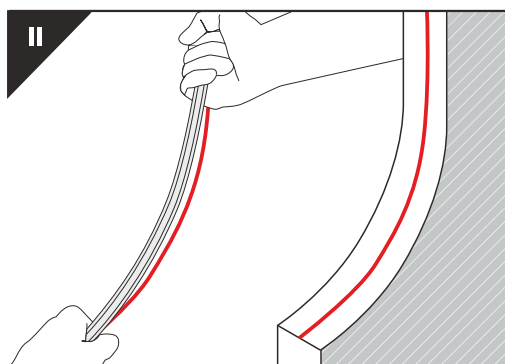
Note! When bending to the outside (picture on the left), the needed length of the cover is greater than the length of the profile.



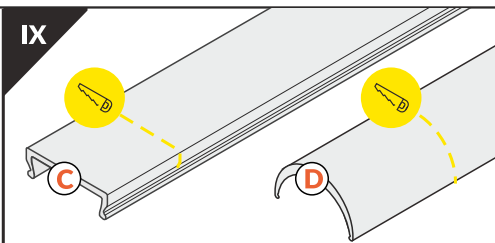
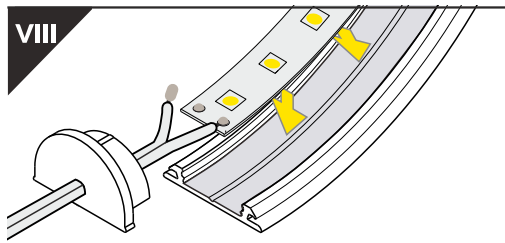
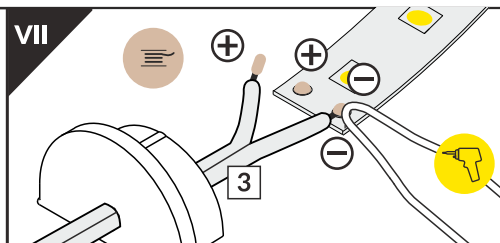
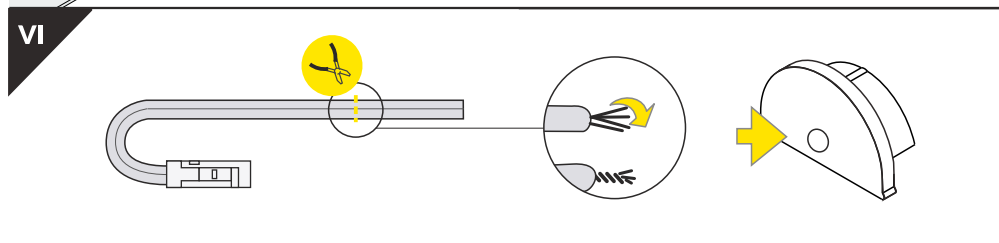
Note! Endings with marked space to bore a hole.

Note! Ending thickness increases the length of the luminaire by 2 mm each side.

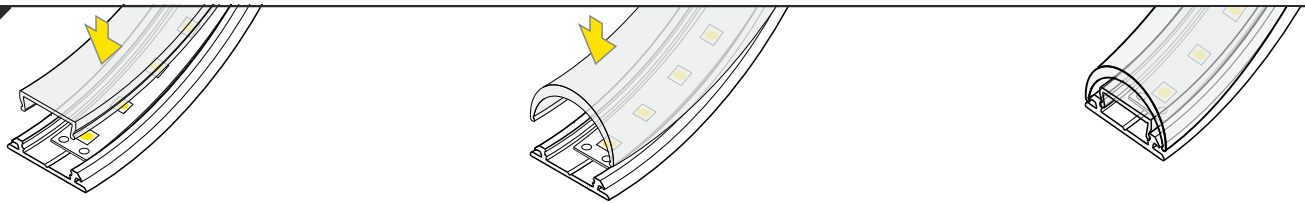
MANUAL BENDING



Dimensions of the space to install LED source.



VI

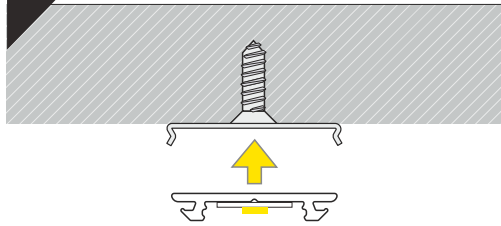


C click cover

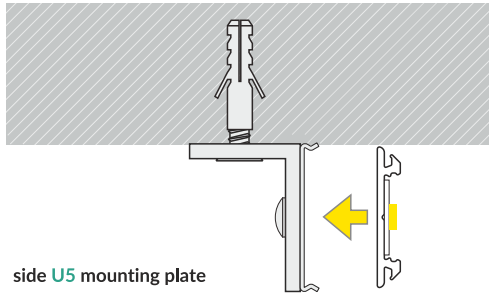
D slide cover

C + D for maximum light diffusion

VII MOUNTING



cone U5 mounting plate

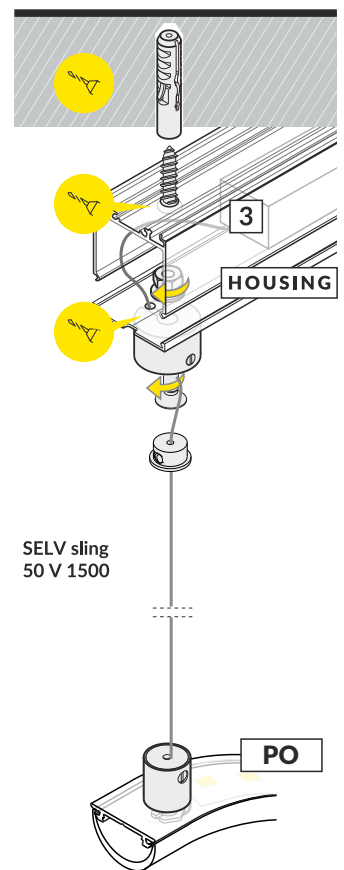
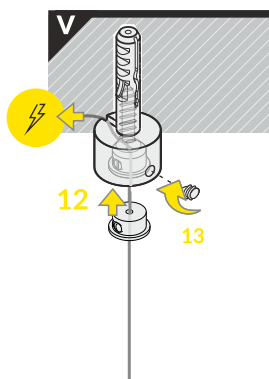
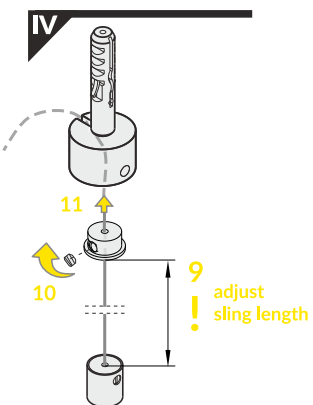
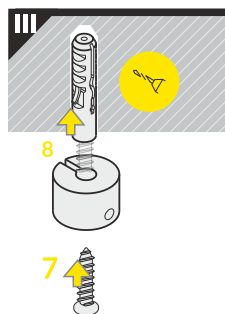
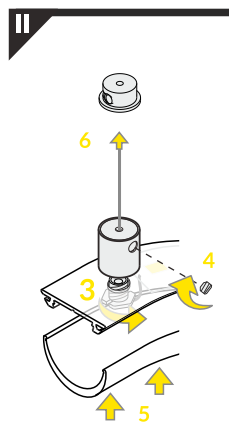
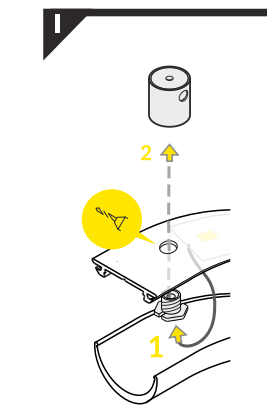


side U5 mounting plate

SLING

SELV sling 50 V 1500

SELV sling + LED power supply housing



IX

ACCESSORIES

- power switches
- controller + remote
- movement sensors

12V/24V

230V

