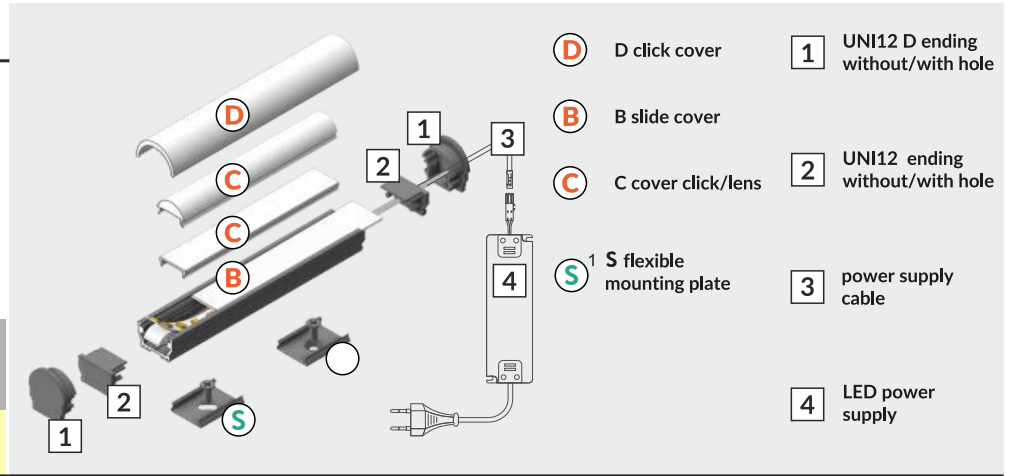
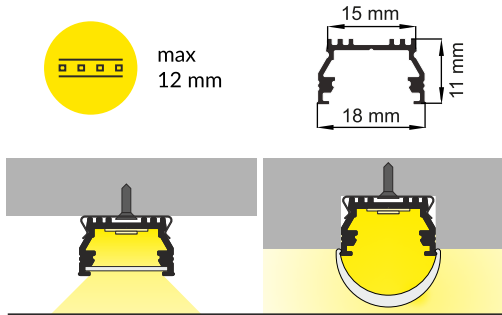


SURFACE PROFILE



scissors



pliers



hacksaw



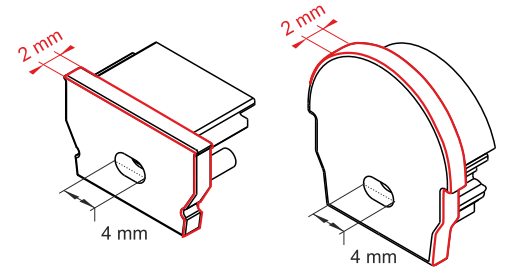
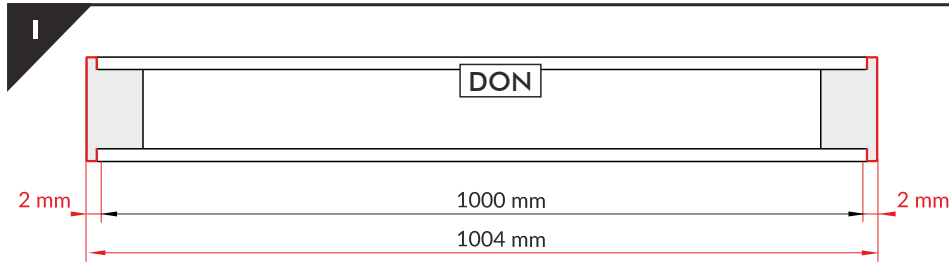
soldering iron



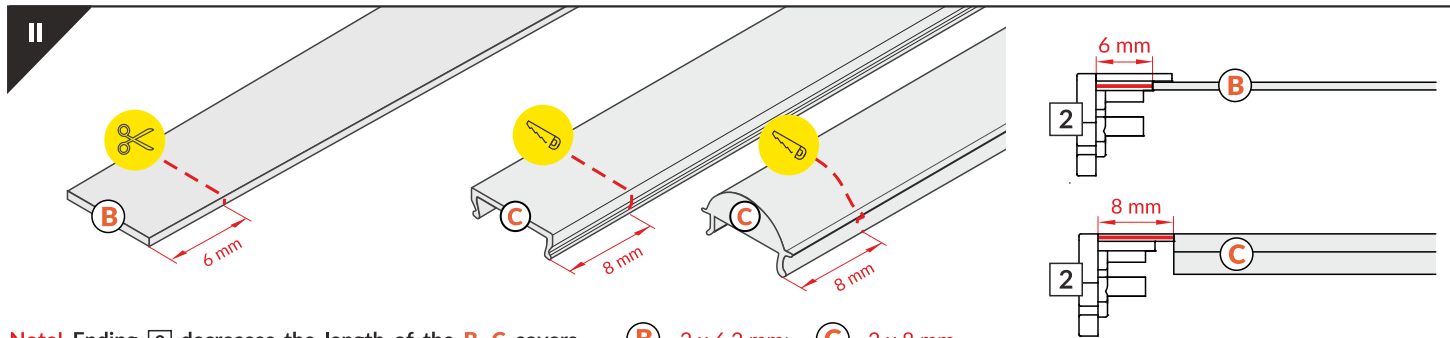
solder



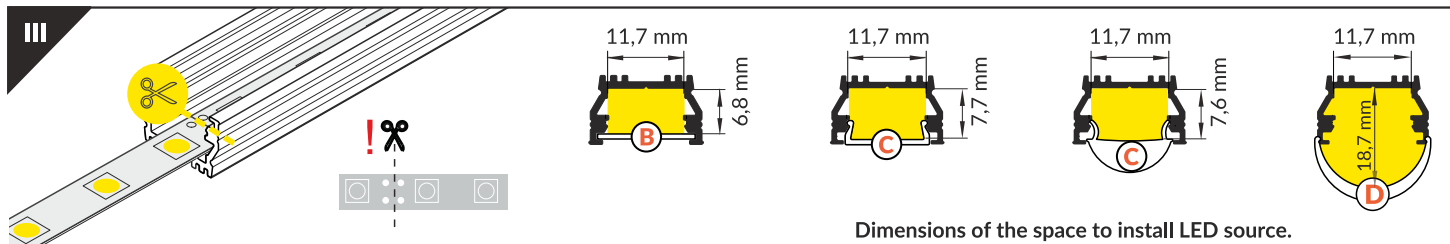
glue



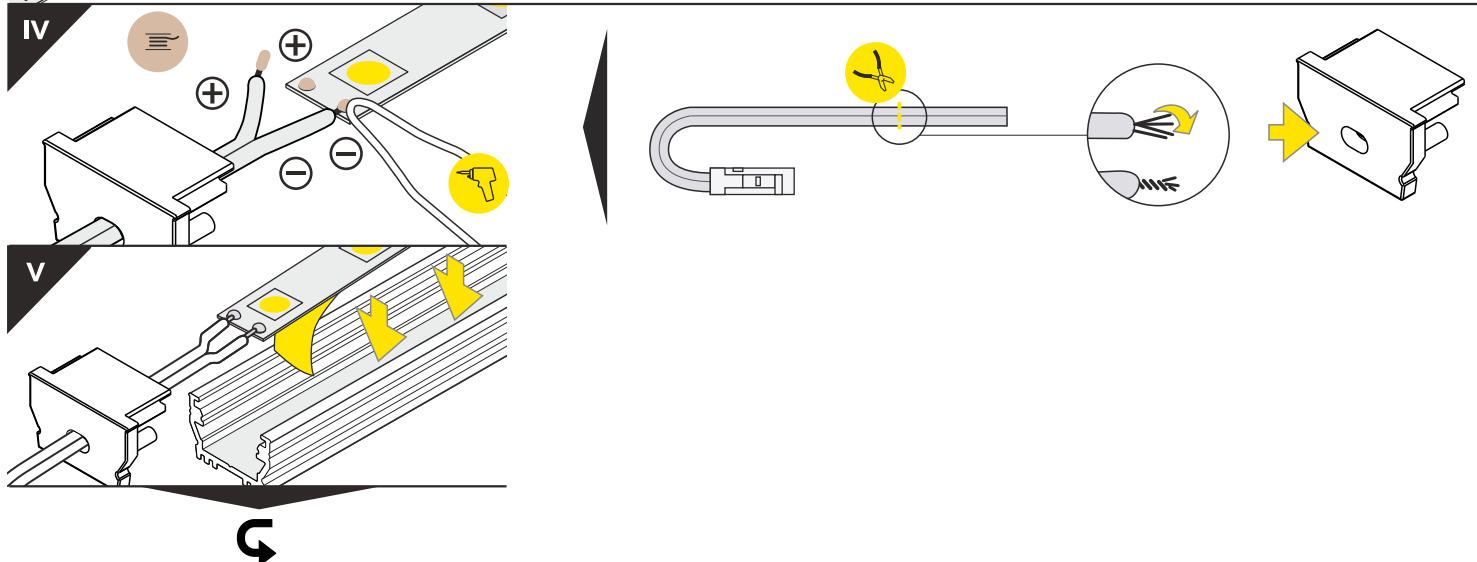
Note! Ending thickness increases the length of the luminaire (+ 2 x 2 mm).



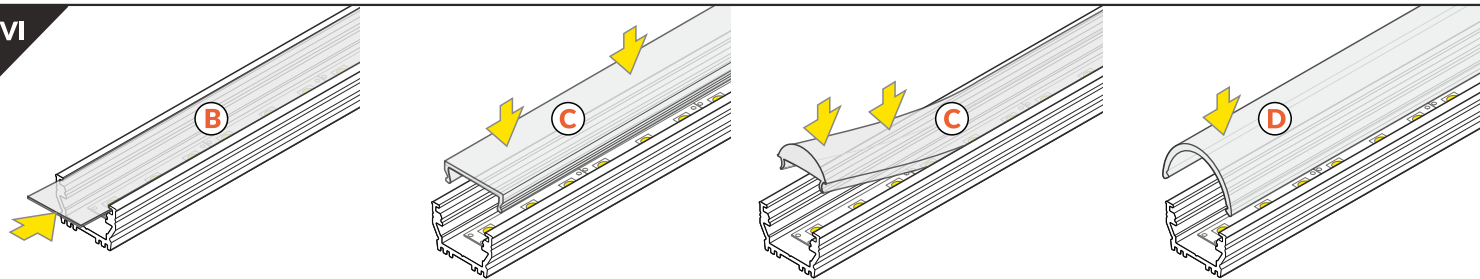
Note! Ending [2] decreases the length of the B, C covers - B -2 x 6,2 mm; C -2 x 8 mm.



Dimensions of the space to install LED source.



VI



B slide cover

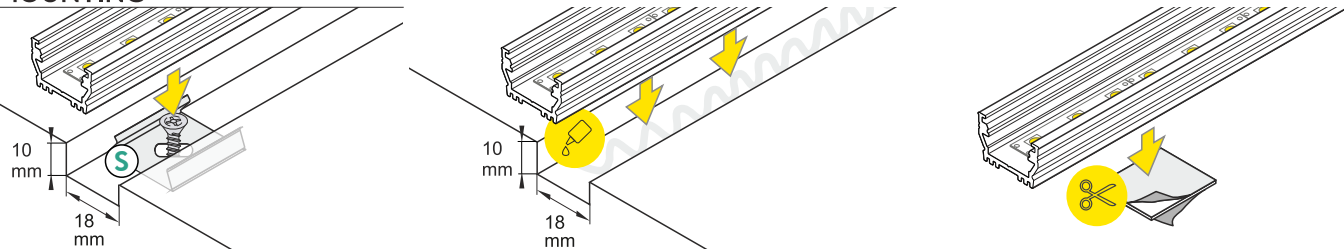
C click cover

C click cover

D click cover

VII

MOUNTING

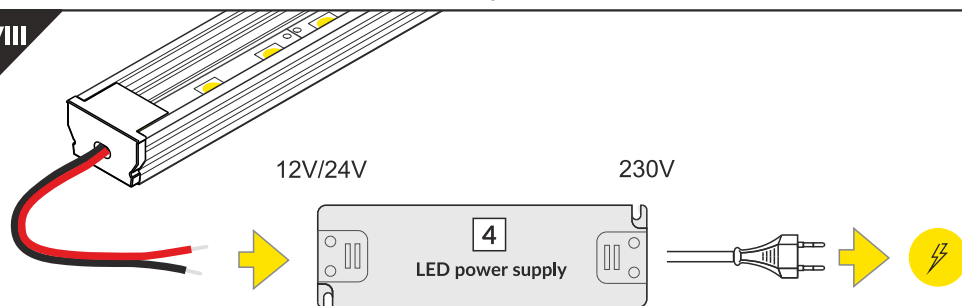


S flexible mounting plate

glue

two-sided adhesive tape 25x25

VIII



ACCESSORIES

- power switches
- controller + remote
- movement sensors